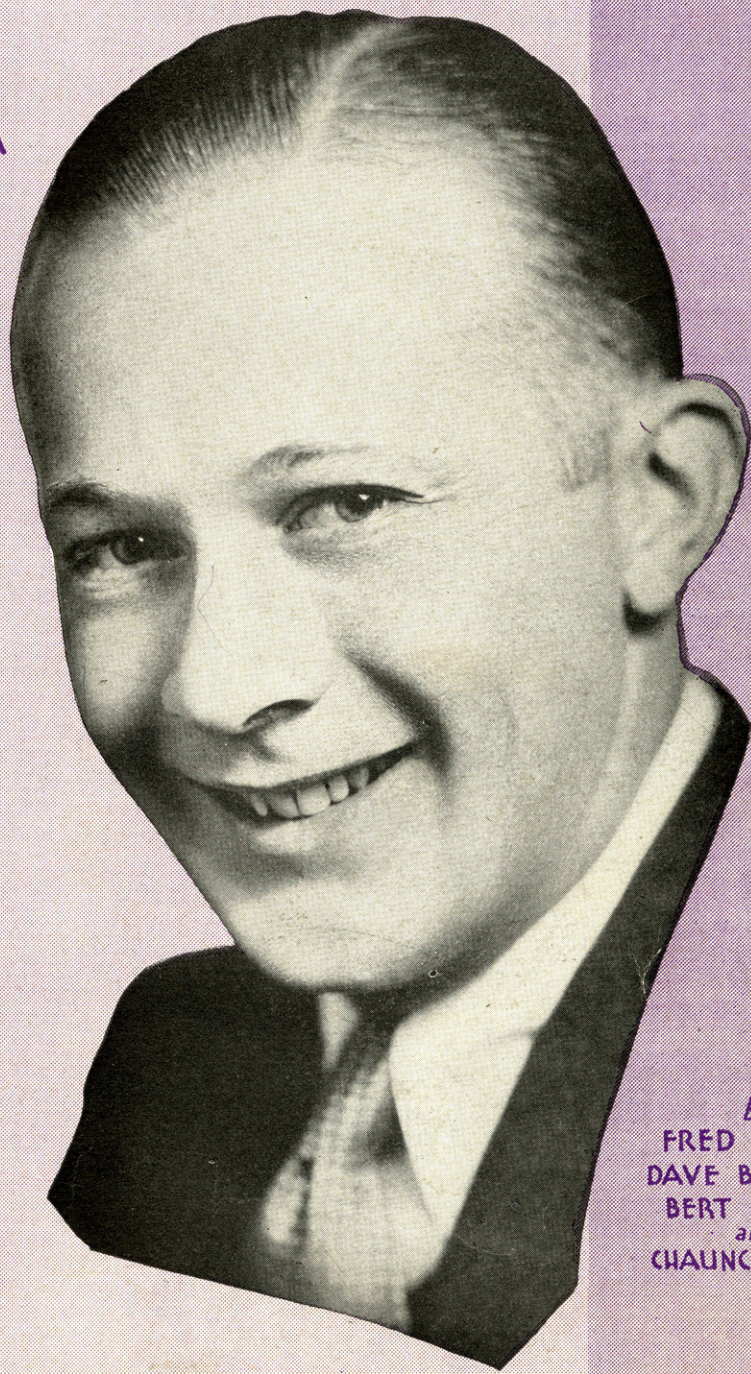


5/1/76

BYE BYE BLUES

signature song of
BERT LOWN
and his
HOTEL BILTMORE ORCHESTRA



by
FRED HAMM
DAVE BENNETT
BERT LOWN
and
CHAUNCEY GRAY



Irving Berlin, Inc.
MUSIC PUBLISHERS
1607 Broadway New York

ORDER CODE
"BYE BYE"

MADE IN
USA

Bye Bye Blues

Tune Ukulele
or Banjulele Banjo
G C E A

By FRED HAMM
DAVE BENNETT
BERT LOWN &
CHAUNCEY GRAY

SM8444

Moderato

Piano

The piano introduction consists of two staves. The right hand starts with a treble clef, a key signature of one sharp (F#), and a 2/4 time signature. It features a series of chords and melodic lines. The left hand starts with a bass clef and provides a rhythmic accompaniment with eighth and sixteenth notes.

The second system of piano accompaniment continues the piece. It features more complex chordal textures and melodic development in both hands, maintaining the moderate tempo.

Voice

I got a

VAMP

p

p

The third system introduces the vocal line. The voice part begins with the lyrics "I got a". Below the vocal line, the piano accompaniment includes a section marked "VAMP" and dynamic markings of piano (*p*).

big sur-prise, when I saw you smile — I nev - er

The fourth system continues the vocal line with the lyrics "big sur-prise, when I saw you smile — I nev - er". The piano accompaniment provides harmonic support for the vocal melody.

Ukulele Arr. by
MAY SINGHI BREEN

dreamed that it could be

But now I re - al - ize since I saw you smile, —

There's on - ly hap - pi - ness for me. So

CHORUS

BYE BYE BLUES

p-f

BYE BYE

BLUES Bells ring,

birds sing Sun is shin - ing

No more pin - ing Just we

two Smil - ing

This system contains the first two lines of music. The top line is a vocal line with a treble clef and a key signature of one flat. It features a long note for the word 'two' and a phrase 'Smil - ing' with a hyphen. The piano accompaniment consists of two staves (treble and bass clefs) with chords and moving lines. Chord diagrams are shown above the vocal line.

thru Don't sigh,

This system contains the second two lines of music. The vocal line continues with 'thru' and 'Don't sigh,'. The piano accompaniment continues with similar harmonic support. Chord diagrams are present above the vocal line.

Don't cry, BYE BYE

This system contains the third two lines of music. The vocal line includes 'Don't cry, BYE BYE'. The piano accompaniment features more complex chordal textures. Chord diagrams are present above the vocal line.

1 2 BLUES. BLUES.

This system contains the final two lines of music. The vocal line has '1' and '2' above it, followed by 'BLUES. BLUES.'. The piano accompaniment includes a double bar line and a repeat sign. Chord diagrams are present above the vocal line.



GREATEST NOVELTY SONG HIT IN YEARS

SWINGIN' IN A HAMMOCK

Words by
TOT SEYMOUR &
CHAS. O'FLYNN

Music by
PETE WENDLING

CHORUS

Swingin' in a ham-mock Un-der-neath the trees Just
you and I to-geth-er Sway-in' in the breeze And we'll be
list-nin' to a blue bird Sing-in' up a-bove

Copyright 1930 by IRVING BERLIN Inc., 1607 Broadway N.Y.C.
International Copyright Secured Made in U.S.A. All Rights Reserved

COPIES ON SALE WHEREVER MUSIC IS SOLD
This Number can also be had for your Phonograph and Player Piano