

1/3/21

BLUE IS THE NIGHT

Words & Music by FRED FISHER

Norma SHEARER IN THEIR OWN DESIRE

THE BARTLETT CO.
EVERYTHING IN MUSIC.
VENTURA, CALIF.

A Metro-
Goldwyn-
Mayer
ALL
TALKING
PICTURE



ROBBINS MUSIC CORPORATION

799 Seventh Avenue, New York

Blue Is The Night

Featured in Metro-Goldwyn-Mayer's Production "THEIR OWN DESIRE"

Words and Music by
FRED FISHER

SM 8424

Moderato

Piano introduction in G major, 4/4 time. The piece begins with a *f* dynamic. The right hand features a melodic line with triplets and a descending scale, while the left hand provides a harmonic accompaniment with chords and single notes.

Piano accompaniment for the first vocal line. The right hand continues the melodic development with chords and moving lines, while the left hand maintains a steady accompaniment.



Slowly



Shad - ows fall day is done night birds call come oh, come

Piano accompaniment for the second vocal line. The right hand features chords and melodic fragments, while the left hand provides a steady accompaniment. The dynamic is marked *mp*.



largamento



Come let my heart ex - plain and tell you o - ver a - gain

Piano accompaniment for the third vocal line. The right hand features chords and melodic fragments, while the left hand provides a steady accompaniment. The dynamic is marked *rit.* and *l.h.* is indicated for the left hand.

Uke Arr. By Milt Coleman
SH 673-4

Copyright 1930 by Metro-Goldwyn-Mayer Corp., New York, N.Y.
 Exclusive Distributors Robbins Music Corporation, 799 Seventh Ave., New York
 Copyrighted in South America by Harry Kosarin, Rio de Janeiro
 Propiedad Asegurada Para Republica Argentina Por Harry Kosarin, Buenos Aires
 Propiedad Asegurada Para Republica Uruguay Por Harry Kosarin, Montevideo
 International Copyright Secured Made in U.S.A. All Rights Reserved

Tune G C E A

Tune G C E A notation: G4 C4 E4 A4

Chorus

* Open

Blue _____ Is The Night a - bove me

p-f

Blue _____ as your eyes are blue _____

Bright _____ is the night if you love me

marcato

Love me as I love you _____ So

come with your sweet-est kiss - - es

Don't al-ways let me say

Blue Is The Night a - bove me

Open

Blue as my heart is blue

Bright as the night if you love me

Love me as I love you

you you Blue Is The

Night Blue Is The Night (Ah! - - -)

3 *3* *3* *3*

f *fz* *fz*

2. *3. Optional* *rit. e dim.*

rit. e dim.

cresc. *f dim.*

SH 673-4

ASK FOR THE ROBBINS EDITION

A Collection of 25 Selected Favorites

FAMOUS NEGRO SPIRITUALS

Includes such Favorites as~

"SWING LOW SWEET CHARIOT" "DEEP RIVER"

"NOBODY KNOWS THE TROUBLE I'VE HAD"

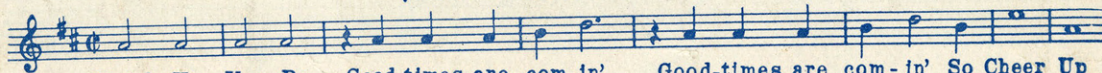
SONG SUCCESSES FROM THE FOREMOST TALKIES

Just A Little Closer



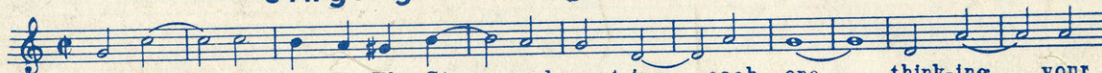
Just A Little Closer ev-'ry day to me That's the way I long to hear you say you'll be
Copyright 1930 by Metro-Goldwyn-Mayer Corp. New York, N.Y.

Cheer Up (Good Times Are Comin')



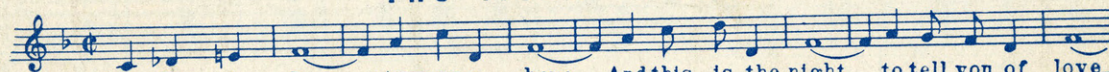
Heigh-Ho Yea-Bo Good-times are com-in' Good-times are com-in' So Cheer Up
Copyright 1930 by Metro-Goldwyn-Mayer Corp. New York, N.Y.

Singing a Song To the Stars



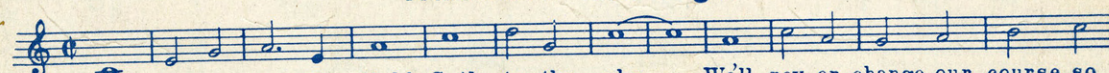
Sing-ing— A Song To The Stars, and count-ing— each one— think-ing— your
Copyright 1930 by Metro-Goldwyn-Mayer Corp. New York, N.Y.

The Moon Is Low



The Moon is Low— stars up a - bove— And this is the night— to tell you of love.
Copyright 1930 by Metro-Goldwyn-Mayer Corp. New York, N.Y.

Anchors Aweigh



Stand Na-vy down the field Sail to the sky— We'll nev-er change our course so
Copyright 1930 by Metro-Goldwyn-Mayer Corp. New York, N.Y.

Blue Is the Night



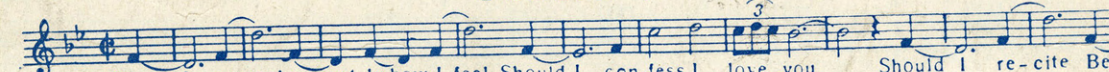
Blue— Is The Night a - bove me Blue— as your eyes are blue— Bright—
Copyright 1930 by Metro-Goldwyn-Mayer Corp. New York, N.Y.

The Woman in the Shoe



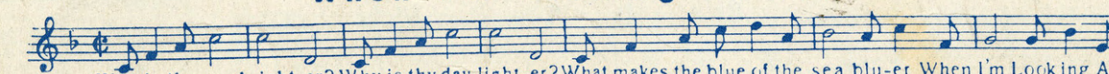
The Wom-an In The Shoe had a fam-ily That al-ways kept her life in a Jam-bo-ree, She
Copyright 1930 by Metro-Goldwyn-Mayer Corp. New York, N.Y.

Should I



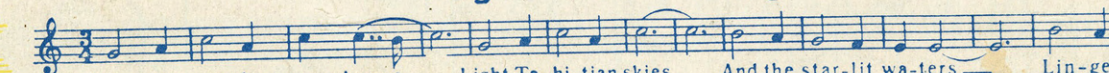
Should I re-veal ex-act-ly how I feel Should I con-fess I love you Should I re-cite Be
Copyright 1929 by Metro-Goldwyn-Mayer Corp. New York, N.Y.

When I'm Looking at You



Why is the sun bright-er? Why is thy day light-er? What makes the blue of the sea blu-er When I'm Looking At
Copyright 1929 by Metro-Goldwyn-Mayer Corp. New York, N.Y.

Pagan Love Song



Come with me where moon-beams— Light Ta-hi-tian skies— And the star-lit wa-ters— Lin-ger
Copyright 1929 by Metro-Goldwyn-Mayer Corp. New York, N.Y.

799 7th Ave.

COPIES OBTAINABLE AT YOUR MUSIC DEALER

ROBBINS MUSIC CORPORATION

New York