

YOU DON'T KNOW PAREE

*E. Ray Goetz Presents*

# FIFTY MILLION FRENCHMEN

*A Musical Comedy Tour Of Paris*

BOOK BY  
HERBERT FIELDS  
LYRICS & MUSIC BY  
COLE PORTER.

DANCES STAGED BY  
LARRY CEBALLOS

DEAUV...



You Do Something T  
Paree  
What Did You Do T  
Find Me A Primitive  
I'm In Love  
You've Got That Thi  
I'm Unlucky At Gan  
You Don't Know Pare  
The Happy Heaven o

HARM  
INCORPORATED  
NEW YORK  
CHAPPELL & CO  
LONDON

MADE IN U.S.A.

# WITH A SONG IN MY HEART

Duet  
(Betty - Stacy)

Words by  
LORENZ HART

Music by  
RICHARD RODGERS

REFRAIN Rather slow but with rhythm

*p-mf*

With a song in my heart \_\_\_\_\_ I be-hold your a -

*p-mf*

This system contains the first two lines of musical notation. The top line is the vocal melody, and the bottom line is the piano accompaniment. The key signature has two flats (B-flat and E-flat), and the time signature is common time (C). The first line of the vocal line includes a double bar line with repeat dots. Chord diagrams are shown above the vocal line. The piano accompaniment starts with a *p-mf* dynamic marking.

dor - a - ble face, Just a song at the start, \_\_\_\_\_

*R.H.*

This system contains the next two lines of musical notation. The vocal line continues with the lyrics "dor - a - ble face, Just a song at the start, \_\_\_\_\_". The piano accompaniment includes a *R.H.* marking in the right hand.

— But it soon is a hymn to your grace. When the mu - sic

*mp*

This system contains the final two lines of musical notation. The vocal line includes the lyrics "— But it soon is a hymn to your grace. When the mu - sic". The piano accompaniment includes a *mp* dynamic marking. A chord diagram with an asterisk (\*) is shown above the final measure of the vocal line.

\* Open strings

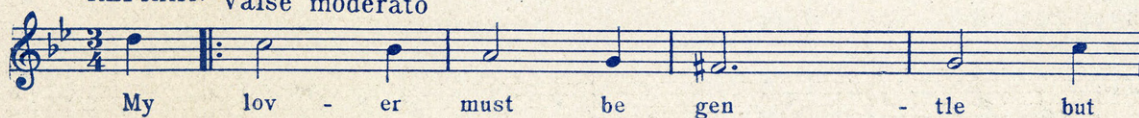
SAMPLE STRAINS  
FROM THE FIRST NATIONAL AND VITAPHONE PICTURE  
**PARIS**

**My Lover**  
(Master Of My Heart)

Lyric by  
AL BRYAN

Music by  
EDDIE WARD

REFRAIN Valse moderato



**Somebody Mighty Like You**

Lyric by  
AL BRYAN

Music by  
EDDIE WARD

REFRAIN Moderato

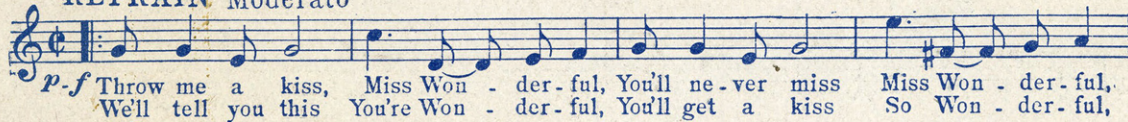


**Miss Wonderful**

Lyric by  
AL BRYAN

Music by  
EDDIE WARD

REFRAIN Moderato

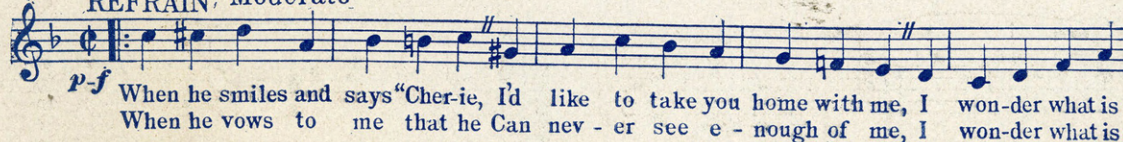


**I Wonder What Is Really On His Mind**

Lyric by  
AL BRYAN

Music by  
EDDIE WARD

REFRAIN Moderato



Copyright MCMXXIX by HARMS Inc., New York  
International Copyright Secured      Made in U.S.A.      All Rights Reserved

RECORDS AND PIANO ROLLS CAN ALSO BE  
PROCURED FOR THE ABOVE SONGS.

**HARMS, Inc. 62 W. 45<sup>TH</sup> ST., N.Y.**