

Ruth Reis

SPECIAL EDITION

# WHEN IT'S SPRINGTIME *in the* ROCKIES

5/1/76



BY  
MARY WOOLSEY  
ROBERT SAUER  
&  
MILT TAGGART

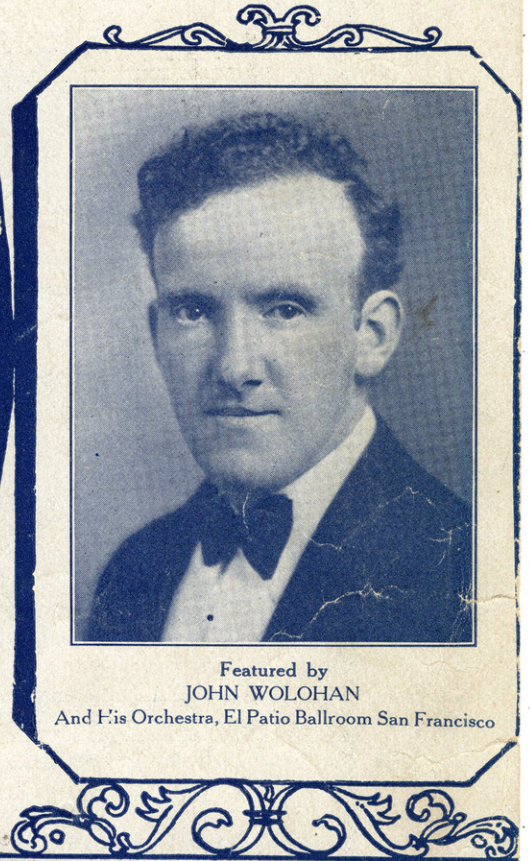
AS FEATURED  
BY  
RUDY VALLEE  
AND HIS  
CONNECTICUT  
YANKEES



295  
WHEN IT'S SPRINGTIME  
IN THE ROCKIES

Charming Waltz Song

WITH  
UKELELE  
ARRANGEMENT



Featured by  
JOHN WOLOHAN  
And His Orchestra, El Patio Ballroom San Francisco



Words and Music by  
MARY HALE WOOLSEY  
ROBERT SAUER  
MILT TAGGART



87

# WHEN IT'S SPRINGTIME IN THE ROCKIES

Charming Waltz Song

33

WITH  
UKELELE  
ARRANGEMENT



Words and Music by  
RAY HALE WOOLSEY  
ROBERT SAUER  
MILT TAGGART



Featured by  
LAUGHNER - HARRIS  
Hotel St. Francis Orch. San Francisco



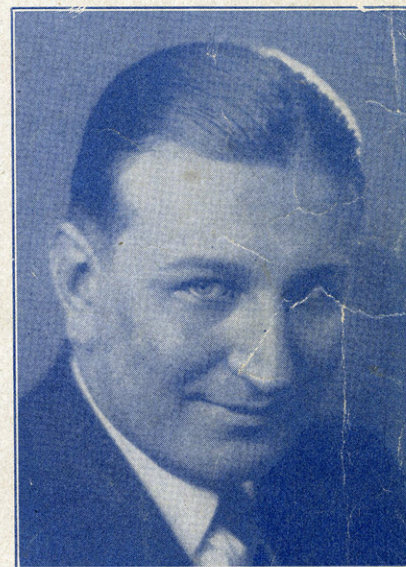
# WHEN IT'S SPRINGTIME IN THE ROCKIES

Charming Waltz Song

WITH  
UKELELE  
ARRANGEMENT



Words and Music by  
MARY HALE WOOLSEY.  
ROBERT SAUER  
MILT TAGGART



Featured by  
TOM GERUN - Musical Director  
William Penn Hotel, Pittsburg, Pa.



# When It's Springtime In the Rockies

A "RAY CANFIELD" Symphonic Ukulele Arrangement

*Tune Uke*  
G C E A

When it's Spring - time in the Rock - ies, —  
I am com - ing back to you, — Lit - tle sweet - heart  
of the moun - tains, — With your bon - ny eyes of  
blue; — Once a - gain I'll say "I love you", — While the  
birds sing all the day — When it's Spring - time in the  
Rock - ies, — In the Rock - ies, far a - way. —

## INSTRUCTIONS FOR PLAYING SYMPHONIC UKULELE SOLOS

Be Sure Your Instrument Is Properly Tuned

Use a felt pick to get the best results. The fingers may be used, but the quality of tone produced is less beautiful. A felt pick properly used produces a tone very similar to a pipe organ.

Place the left hand fingers in accord with diagramed dots on frets indicated by numbers to the left of each chord. A number of dots or notes together on one line are to be held down with one finger, the first, preferably.

(X) When a string is marked X gauge the stroke to avoid striking this string, or muffle it by touching lightly with the finger.

(V) The check V indicates that the string over which it occurs is to be picked while the chord is held down.

—VILLA MORET, INC.

Be Sure to Buy a Copy of "Ray Canfield's Symphonic Ukulele Arrangements,"  
Containing Ten Masterful Solos. PRICE 50¢ at all Dealers. Or Order From  
PUBLISHERS, VILLA MORET, INC. SAN FRANCISCO, CALIFORNIA



# "CARMELITA"

Spanish Love Song

Words and Music  
by  
RAYMOND ELDRED

REFRAIN  



My Car - mel - i - ta ————— you're ev - er in my  
*sognando*





dreams ————— Car - mel - i - ta ————— while ten - der star - light



gleams ————— I re - mem - ber ————— your won - drous smile so  
*ten*

International Copyright Secured

Copyright 1930 by VILLA MORET Inc. San Francisco  
Made in U.S.A.

All Rights Reserved

