

WHEN I'M LOOKING AT YOU

35
25

The ROGUE SONG

The Great Screen
Operetta Featuring the
Celebrated Metropolitan
Opera Star
LAWRENCE TIBBETT

Words by
CLIFFORD GREY
Music by
HERBERT STOTHART



WHEN I'M LOOKING AT YOU
THE ROGUE SONG
THE NARRATIVE

A Metro-Goldwyn-Mayer
PICTURE

ROBBINS MUSIC CORPORATION

799 Seventh Avenue, New York

Try this Melody Over

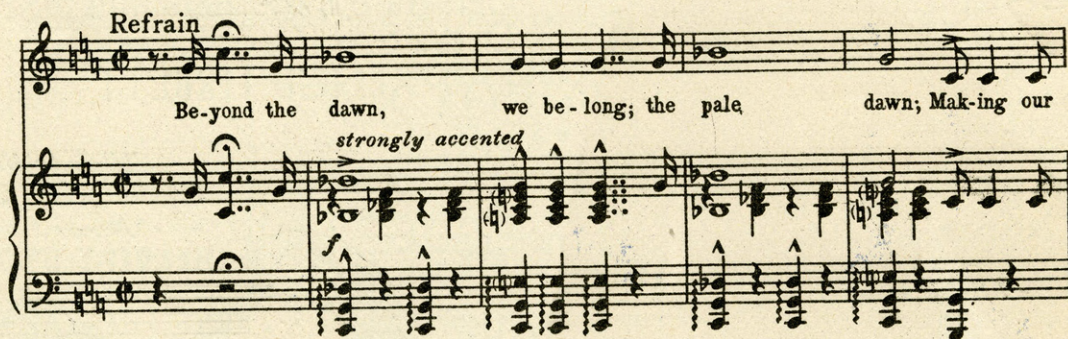
The Rogue Song

Featured in Metro-Goldwyn-Mayer's Operetta "THE ROGUE SONG"

Words by
CLIFFORD GREY

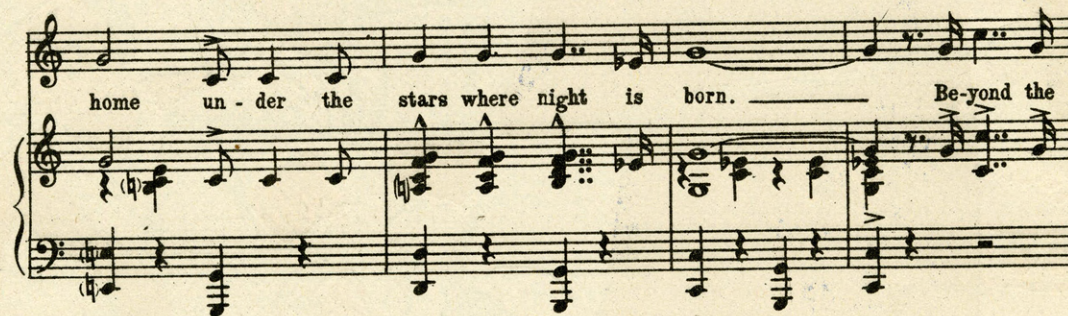
Music by
HERBERT STOTHART

Refrain




Be-yond the dawn, we be-long; the pale dawn; Mak-ing our

strongly accented



home un-der the stars where night is born. ————— Be-yond the



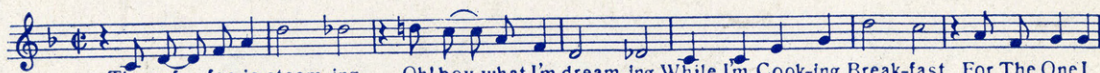
plain! Seek us there in vain; Where the frown-ing

Copyright 1929 by Metro-Goldwyn-Mayer Corp., New York, N. Y.
Exclusive Distributors Robbins Music Corporation, 799 Seventh Ave., New York
Made in U. S. A.

Complete Song May Be Purchased From Your Favorite Dealer

SONG SUCCESSES FROM THE FOREMOST TALKIES

Cooking Breakfast for the One I Love



The cof - fee is steam-ing, Oh! boy what I'm dream-ing While I'm Cook-ing Break-fast For The One I

Copyright 1930 by William Rose Inc., New York, N.Y.

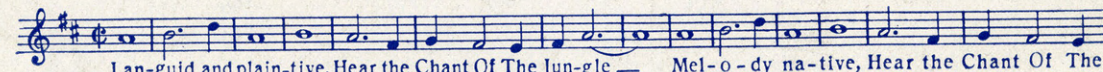
Should I



Should I re-veal ex-act-ly how I feel Should I con-fess I love you Should I re-cite Be

Copyright 1929 by Metro-Goldwyn-Mayer Corp. New York, N.Y.

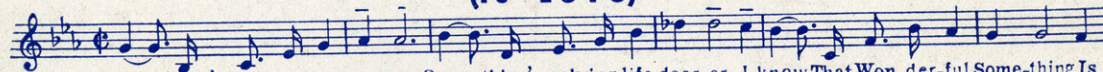
Chant of the Jungle



Lan-guid and plain-tive, Hear the Chant Of The Jun-gle — Mel-o-dy na-tive, Hear the Chant Of The

Copyright 1929 by Metro-Goldwyn-Mayer Corp. New York, N.Y.

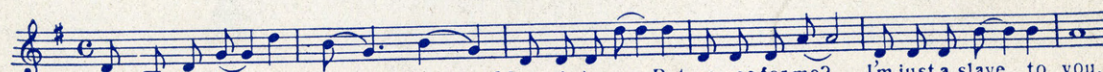
That Wonderful Something (Is Love)



Some-thing's bring-ing you near-er Some-thing's mak-ing life dear-er I know, That Won-der-ful Some-thing Is

Copyright 1929 by Metro-Goldwyn-Mayer Corp. New York, N.Y.

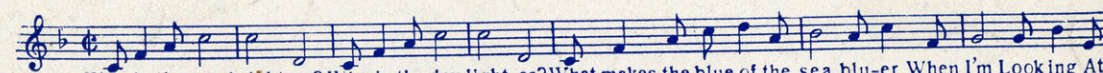
Charming



How can you be so Charm-ing, Charm-ing? Love-ly to see. But no use for me? I'm just a slave to you.

Copyright 1929 by Metro-Goldwyn-Mayer Corp. New York, N.Y.

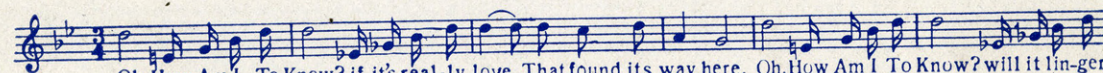
When I'm Looking at You



Why is the sun bright-er? Why is thy day light-er? What makes the blue of the sea blu-er When I'm Looking At

Copyright 1929 by Metro-Goldwyn-Mayer Corp. New York, N.Y.

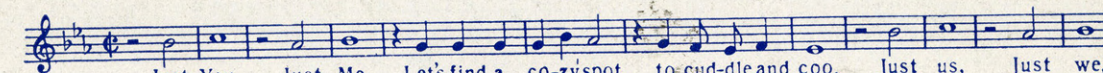
How Am I To Know



Oh, How Am I To Know? if it's real-ly love. That found its way here, Oh, How Am I To Know? will it lin-ger

Copyright 1929 by Metro-Goldwyn-Mayer Corp. New York, N.Y.

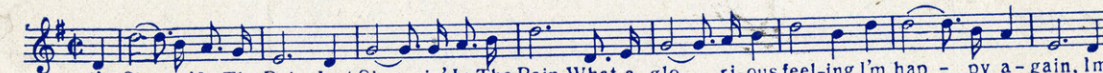
Just You, Just Me



Just You, Just Me, Let's find a co-zyspot, to-cud-dle and coo. Just us, Just we,

Copyright 1929 by Metro-Goldwyn-Mayer Corp. New York, N.Y.

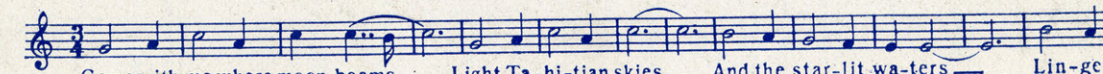
Singin' in the Rain



I'm Sing-in' In The Rain, Just Sing - in' In The Rain. What a glo - ri-ous feel-ing I'm hap - py a-gain, I'm

Copyright 1929 by Metro-Goldwyn-Mayer Corp. New York, N.Y.

Pagan Love Song



Come with me where moon-beams — Light Ta-hi-tian skies — And the star-lit wa-ters — Lin-ger

Copyright 1929 by Metro-Goldwyn-Mayer Corp. New York, N.Y.

COPIES OBTAINABLE AT YOUR MUSIC DEALER

799 7th Ave.

ROBBINS MUSIC CORPORATION

New York