

THE WEB OF LOVE

Sung in Conjunction with
JAMES CRUZE INC. ALL-DIALOG
MUSICAL SCREEN EXTRAVAGANZA

The
**GREAT
GABBO**

Personally
Directed by
JAMES CRUZE

Words & Music
by
PAUL TITSWORTH
and
LYNN COWAN

I'm In Love With You
Every Now And Then
The Web Of Love
The Ga Ga Bird
The New Step
I'm Laughing
"Icky"

Starring
ERICH von STROHEIM
and
BETTY COMPTON
with
MARGIE (BABE) KANE
and DON DOUGLAS

Sherman,  & Co.
SAN FRANCISCO

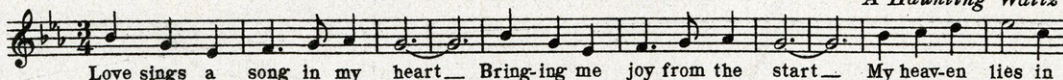


P. M.
GRIFFITH



LOVE SINGS A SONG

A Haunting Waltz

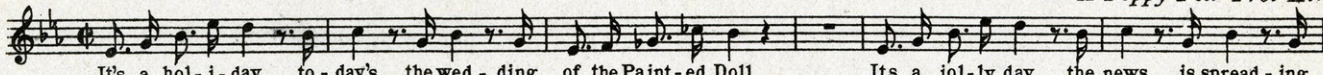


Love sings a song in my heart— Bring-ing me joy from the start— My heav-en lies in

Copyright 1929 by Sherman, Clay & Co., San Francisco

THE WEDDING OF THE PAINTED DOLL

A Peppy Fox Trot Hit

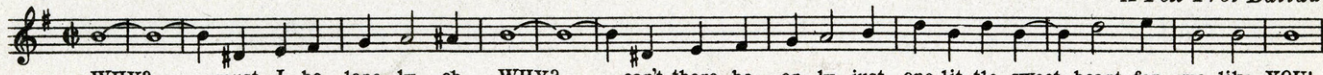


It's a hol-i-day, to-day's the wed-ding of the Paint-ed Doll Its a joi-ly day, the news is spread-ing

Copyright 1929 by Sherman, Clay & Co., San Francisco

THEN I'LL KNOW WHY

A Fox Trot Ballad

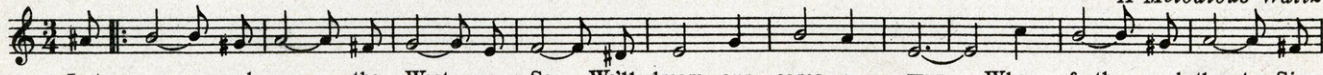


WHY?— must I be lone-ly, oh WHY?— can't there be on-ly just one lit-tle sweet-heart for me, like YOU!

Copyright 1929 by Sherman, Clay & Co., San Francisco

BESIDE THE WESTERN SEA

A Melodious Waltz



Just you— and me,— the West-ern Sea— We'll dream our cares a - way.— Where feath-ered throats, Sing

Copyright 1929 by Sherman, Clay & Co., San Francisco

RAG DOLL

A Novelty Fox Trot

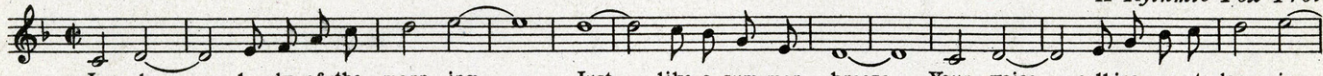


There is a mem-o-ry, ev-er re - call-ing to me, My lit-tle rag-ged-y doll;— She was a sight to view, with-out a

Copyright 1928 by Sherman, Clay & Co., San Francisco

LADY OF THE MORNING

A Rhythmic Fox Trot

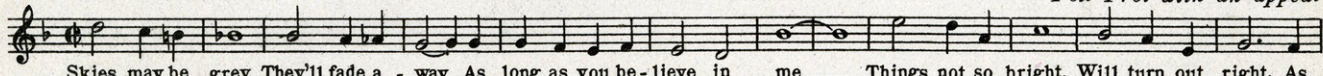


La - dy, — la - dy of the morn - ing — Just — like a sum - mer breeze. — Your voice — call - ing me at dawn - ing —

Copyright 1929 by Sherman, Clay & Co., San Francisco

AS LONG AS YOU BELIEVE IN ME

Fox Trot with an appeal



Skies may be grey, They'll fade a - way As long as you be - lieve in me — Things not so bright, Will turn out right, As

Copyright 1929 by Sherman, Clay & Co., San Francisco

THE DOLL DANCE

A Favorite everywhere

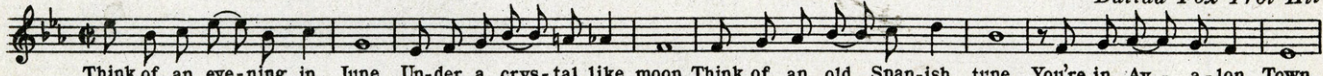


What a pe - cul-i-ar tune, Thrill-ing me night and noon, What a pe-cul-i-ar tune.— Has such a fun-ny swing, It's such a

Copyright 1927 by Sherman, Clay & Co., San Francisco

AVALON TOWN

Ballad Fox Trot Hit

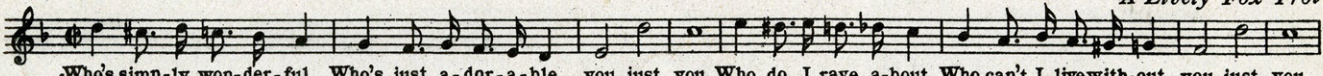


Think of an eve-ning in June, Un-der a crys-tal like moon Think of an old Span-ish tune, You're in Av - a - lon Town.

Copyright 1928 by Sherman, Clay & Co., San Francisco

YOU JUST YOU

A Lively Fox Trot



.Who's simp-ly won-der-ful, Who's just a-dor-a-ble, you just you. Who do I rave a-bout, Who can't I livewith-out, you just you.

Copyright 1929 by Sherman, Clay & Co., San Francisco

Copies for sale
wherever music is sold.

Sherman,  Clay & Co.

SAN FRANCISCO

These numbers can also
be had for your phonograph
and player piano.