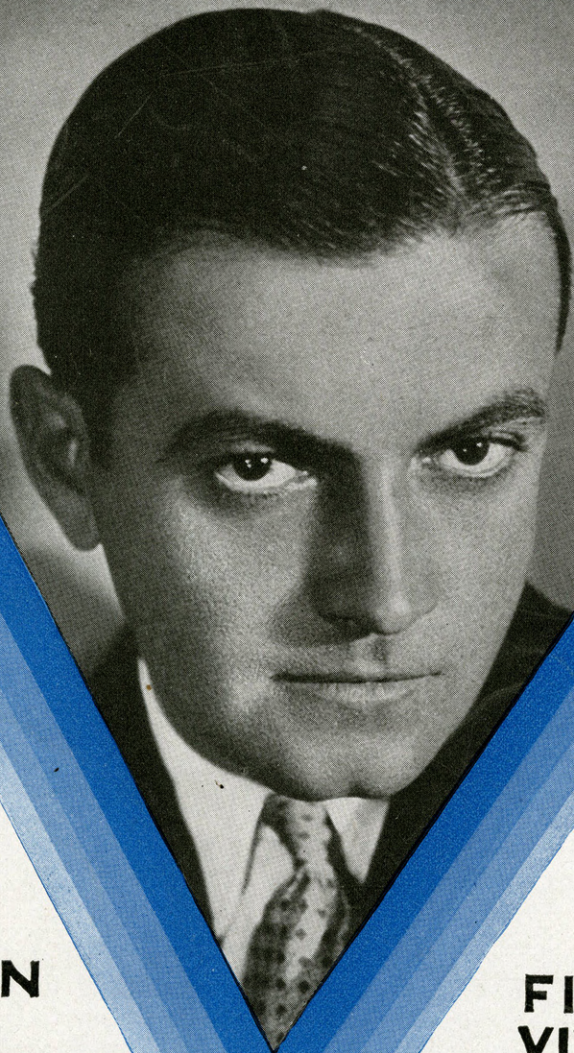


# *I'm Too Young To Be Careful*



*Lyric by*  
**AL BRYAN**  
*Music by*  
**GEO. W. MEYER**  
**M. WITMARK & SONS**  
NEW YORK  
Printed in U.S.A.

*Ukulele Acc.*

*Theme Song*  
*from the*  
**FIRST NATIONAL  
VITAPHONE PICTURE**

*Richard*  
*Barthelmess*  
*in*  
**DRAG**



# VICTOR HERBERT'S GREATEST SONG SUCCESSES

Solo 4 Keys - 40¢  
Duet 2 Keys - 50¢

## Ah! Sweet Mystery Of Life

Lyric by  
RIDA JOHNSON YOUNG

Moderato

*cresc. molto*

*ff*

For 'tis love, and love a-lone, the world is seek-ing, For 'tis  
love, and love a-lone that can re-pay! 'Tis the an-swer, 'tis the end and all of liv-ing!

The musical score for 'Ah! Sweet Mystery Of Life' is written for piano. It features a treble and bass clef with a 2/4 time signature. The tempo is marked 'Moderato'. The score includes dynamic markings such as 'cresc. molto' and 'ff'. The lyrics are written below the notes, with some words like 'love, and love a-lone' and 'the world is seek-ing' spanning across multiple measures.

Copyright MCMX by M. Witmark & Sons

International Copyright Secured

Solo 3 Keys - 40¢  
Duet 1 Key - 50¢

## Gypsy Love Song (Slumber on my little Gypsy Sweetheart)

Lyric by  
HARRY B. SMITH

*dolcissimo*

Slum-ber on, my lit-tle gyp-sy sweet-heart, Dream of the field and the  
grove. Can you hear me, hear me in the dream-land,

The musical score for 'Gypsy Love Song' is written for piano. It features a treble and bass clef with a 2/4 time signature. The tempo is marked 'dolcissimo'. The score includes dynamic markings such as 'dolcissimo'. The lyrics are written below the notes, with some words like 'Slum-ber on, my lit-tle gyp-sy sweet-heart' and 'Dream of the field and the grove' spanning across multiple measures.

Copyright MDCCCXCVIII by M. Witmark & Sons

International Copyright Secured

Solo 4 Keys - 40¢  
Duet 2 Keys - 50¢

## Kiss Me Again

Lyric by  
HENRY BLOSSOM

Valse lente

*ppp molto espress.*

Sweet sum-mer breeze, whis-per-ing trees, Stars shin-ing soft-ly a-bove;  
Ros-es in bloom waft-ed per-fume, Sleep-y birds dream-ing of

The musical score for 'Kiss Me Again' is written for piano. It features a treble and bass clef with a 3/4 time signature. The tempo is marked 'Valse lente'. The score includes dynamic markings such as 'ppp molto espress.' and 'pp'. The lyrics are written below the notes, with some words like 'Sweet sum-mer breeze, whis-per-ing trees' and 'Stars shin-ing soft-ly a-bove' spanning across multiple measures.

Copyright MCMXV by M. Witmark & Sons

International Copyright Secured

THE ABOVE CAN BE HAD WHEREVER MUSIC IS SOLD OR OF THE PUBLISHERS  
M. WITMARK & SONS, DEPT' W, 1650 BROADWAY, NEW YORK

GET  
SON  
FOR  
TALK  
MACH  
ANI  
PLAY  
PIA

WARNER  
BROS.

VITAPHONE

SINGING  
PICTURES

FIRST  
NATIONAL

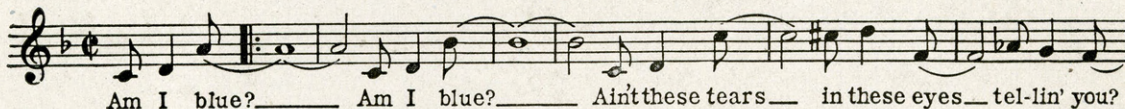
VITAPHONE

SINGING  
PICTURES

## THEME SONGS

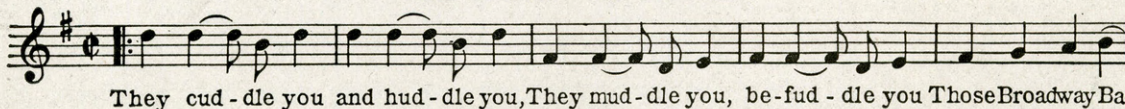
### AM I BLUE?

by GRANT CLARKE and HARRY AKST  
from ON WITH THE SHOW — Sung by ETHEL WATERS



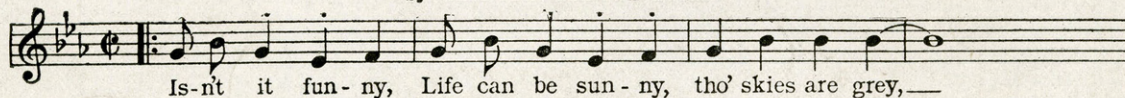
### BROADWAY BABY DOLLS

by AL. BRYAN and GEO. W. MEYER  
from BROADWAY BABIES



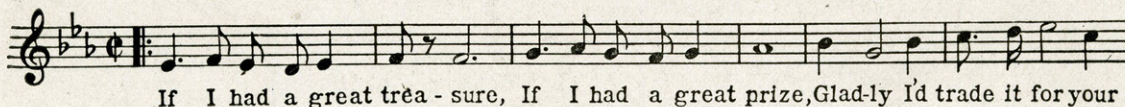
### LOVE WILL FIND A WAY

from IN THE HEADLINES — starring MARION NIXON and GRANT WITHERS  
by AL DUBIN and JOE BURKE



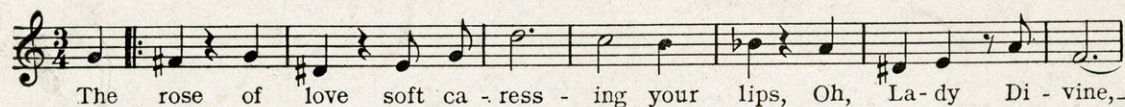
### SMILING IRISH EYES

by HERMAN RUBY and RAY PERKINS  
from SMILING IRISH EYES — starring COLLEEN MOORE



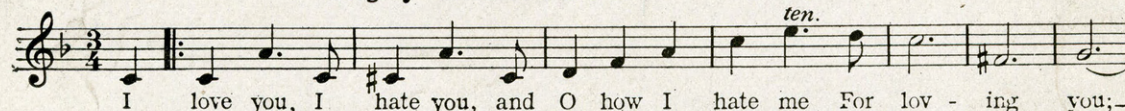
### LADY DIVINE

by RICHARD KOUNTZ and NAT. SHILKRET  
from THE DIVINE LADY — starring CORINNE GRIFFITH



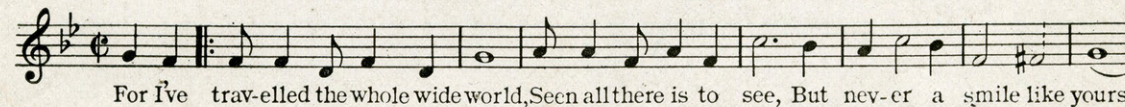
### I LOVE YOU, I HATE YOU

by AL. BRYAN and GEO. W. MEYER  
Sung by CARMEL MEYERS in CAREERS



### I'VE NEVER SEEN A SMILE LIKE YOURS

by JUSTIN JOHNSON and EDDIE FRAZIER  
from ROLAND WEST'S ALIBI — A United Artists' Picture



CAN BE HAD WHEREVER MUSIC IS SOLD OR FROM THE PUBLISHERS.

M. WITMARK & SONS · 1650 BROADWAY · NEW YORK