

If You Were Mine



Lyric by
AL. BRYAN
Music by
GEO. W. MEYER



Ukulele
Acc.

THEME SONG
from
FIRST NATIONAL'S
VITAPHONE PICTURE

Twin Beds

WITH
JACK MULHALL



M. WITMARK & SONS
NEW YORK
Printed in U.S.A.

VICTOR HERBERT'S GREATEST SONG SUCCESSES

Solo 4 Keys - 40¢
Duet 2 Keys - 50¢

Ah! Sweet Mystery Of Life

Lyric by
RIDA JOHNSON YOUNG

Moderato

cresc. molto

ff

For 'tis love, and love a-lone, the world is seek-ing, For 'tis
love, and love a-lone that can re-pay! 'Tis the an-swer, 'tis the end and all of liv-ing!_

The musical score for 'Ah! Sweet Mystery Of Life' is written for piano and voice. It features a moderate tempo and a key signature of one flat. The piano accompaniment includes dynamic markings such as 'cresc. molto' and 'ff'. The lyrics are: 'For 'tis love, and love a-lone, the world is seek-ing, For 'tis love, and love a-lone that can re-pay! 'Tis the an-swer, 'tis the end and all of liv-ing!'.

Copyright MCMX by M. Witmark & Sons

International Copyright Secured

Solo 3 Keys - 40¢
Duet 1 Key - 50¢

Gypsy Love Song (Slumber on my little Gypsy Sweetheart)

Lyric by
HARRY B. SMITH

dolcissimo

Slum-ber on, my lit-tle gyp-sy sweet-heart, Dream of the field and the
grove. Can you hear me, hear me in the dream-land,

The musical score for 'Gypsy Love Song' is written for piano and voice. It features a very slow tempo and a key signature of one flat. The piano accompaniment includes the dynamic marking 'dolcissimo'. The lyrics are: 'Slum-ber on, my lit-tle gyp-sy sweet-heart, Dream of the field and the grove. Can you hear me, hear me in the dream-land,'.

Copyright MDCCCXCVIII by M. Witmark & Sons

International Copyright Secured

Solo 4 Keys - 40¢
Duet 2 Keys - 50¢

Kiss Me Again

Lyric by
HENRY BLOSSOM

Valse lente

ppp molto espress.

Sweet sum-mer breeze, whis-per-ing trees, Stars shin-ing soft-ly a-bove;
pp
Ros-es in bloom waft-ed per-fume, Sleep-y birds dream-ing of

The musical score for 'Kiss Me Again' is written for piano and voice. It features a very slow tempo and a key signature of one flat. The piano accompaniment includes dynamic markings such as 'ppp molto espress.' and 'pp'. The lyrics are: 'Sweet sum-mer breeze, whis-per-ing trees, Stars shin-ing soft-ly a-bove; Ros-es in bloom waft-ed per-fume, Sleep-y birds dream-ing of'.

Copyright MCMXV by M. Witmark & Sons

International Copyright Secured

THE ABOVE CAN BE HAD WHEREVER MUSIC IS SOLD OR OF THE PUBLISHERS
M. WITMARK & SONS, DEP'T W, 1650 BROADWAY, NEW YORK

WARNER
BROS.

VITAPHONE

SINGING
PICTURES

FIRST
NATIONAL

VITAPHONE

SINGING
PICTURES

THEME SONGS

FROM
THE COLLECTION OF
Gene Blakely

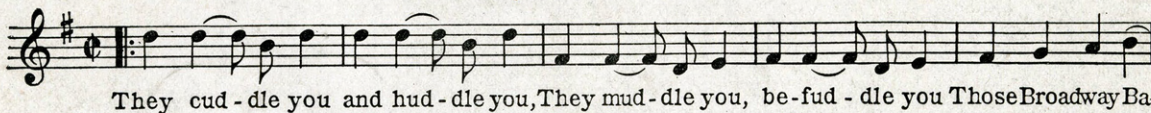
AM I BLUE?

by GRANT CLARKE and HARRY AKST
from ON WITH THE SHOW — Sung by ETHEL WATERS



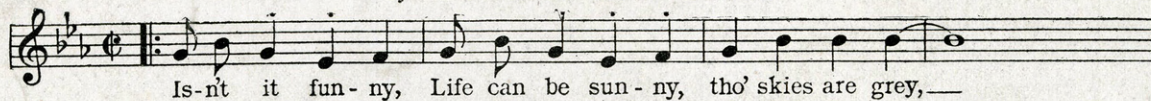
BROADWAY BABY DOLLS

by AL. BRYAN and GEO. W. MEYER
from BROADWAY BABIES



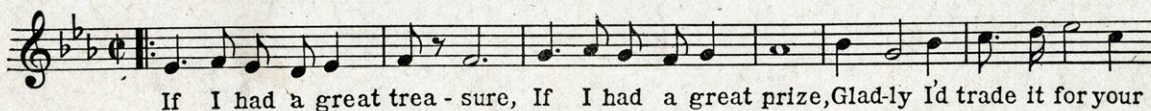
LOVE WILL FIND A WAY

from IN THE HEADLINES — starring MARION NIXON and GRANT WITHERS
by AL DUBIN and GRANT CLARKE



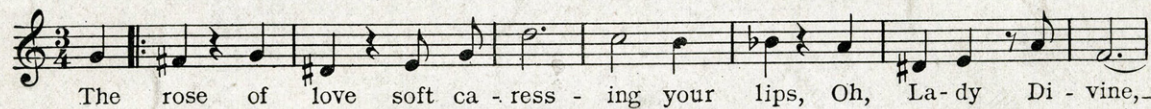
SMILING IRISH EYES

by HERMAN RUBY and RAY PERKINS
from SMILING IRISH EYES — starring COLLEEN MOORE



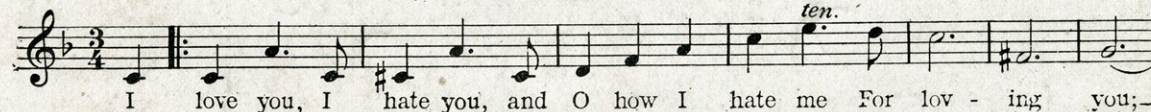
LADY DIVINE

by RICHARD KOUNTZ and NAT. SHILKRET
from THE DIVINE LADY — starring CORINNE GRIFFITH



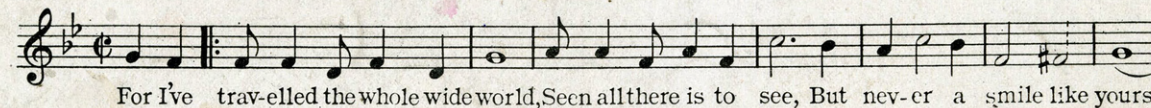
I LOVE YOU, I HATE YOU

by AL. BRYAN and GEO. W. MEYER
Sung by CARMEL MEYERS in CAREERS



I'VE NEVER SEEN A SMILE LIKE YOURS

by JUSTIN JOHNSON and EDDIE FRAZIER
from ROLAND WEST'S ALIBI — A United Artists' Picture



CAN BE HAD WHEREVER MUSIC IS SOLD OR FROM THE PUBLISHERS.

M. WITMARK & SONS • 1650 BROADWAY • NEW YORK