

"ICKY"

Sung in Conjunction with
JAMES CRUZE INC. ALL-DIALOG
MUSICAL SCREEN EXTRAVAGANZA

The GREAT GABBO

Personally
Directed by
JAMES CRUZE

Words & Music
by
DON McNAMEE
and
KING ZANY

I'm In Love With You
Every Now And Then
The Web Of Love
The Ga Ga Bird
The New Step
I'm Laughing
"Icky"

Starring
ERICH von STROHEIM
and
BETTY COMPSON
with
MARGIE (BABE) KANE
and DON DOUGLAS



Sherman, Clay & Co.
SAN FRANCISCO

P. O. M.
GRIFFITH



From Carl Laemmle's Universal Super Production
 "SHOW BOAT"



Especially dedicated to Miss Laura La Plante, actress incomparable as "Magnolia" in the Show Boat

**LOVE SINGS A SONG
 IN MY HEART**

Lyrics by
CLARENCE J. MARKS
 Chorus

Music by
JOSEPH CHERNIAVSKY

Love sings a song in my heart

Bring - ing me joy from the start.

Copyright MCMXXIX by Sherman, Clay & Co., San Francisco
 International Copyright Secured and Reserved
 Keith, Prowse & Co. Ltd., London, W. 1. — Allan's Proprietary, Ltd., Melbourne, Australia

Featured in The United Artist's Picture "ALIBI" A Roland West Production

THEN I'LL KNOW WHY

**PAUL TITSWORTH
 and LYNN COWAN**
 Composer of "Dream House"

Chorus

WHY? must I be lone - ly, oh WHY?

cant there be on - ly just one lit - tle sweet - heart for

Copyright MCMXXIX by Sherman, Clay & Co. San Francisco
 International Copyright Secured and Reserved
 Keith, Prowse & Co. Ltd., London, W. 1. — Allan's Proprietary, Ltd., Melbourne, Australia

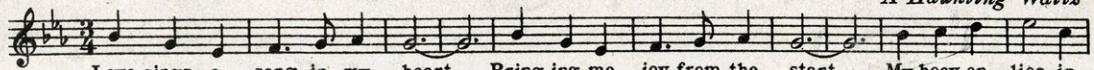
**Copies for sale wherever music is sold.
 These numbers can also be had for your phonograph and player piano.**

Sherman, & Co.
 SAN FRANCISCO



LOVE SINGS A SONG

A Haunting Waltz

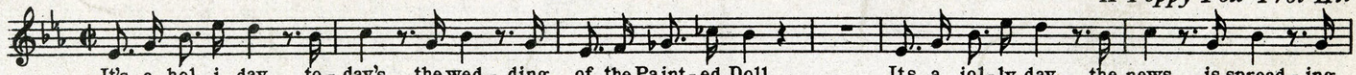


Love sings a song in my heart— Bring-ing me joy from the start— My heav-en lies in

Copyright 1929 by Sherman, Clay & Co., San Francisco

THE WEDDING OF THE PAINTED DOLL

A Peppy Fox Trot Hit

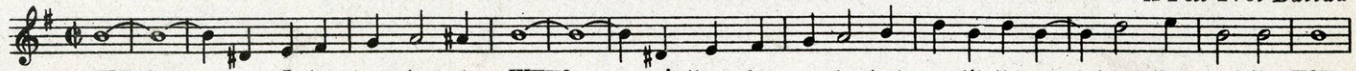


It's a hol-i-day, to-day's the wed-ding of the Paint-ed Doll Its a jol-ly day, the news is spread-ing

Copyright 1929 by Sherman, Clay & Co., San Francisco

THEN I'LL KNOW WHY

A Fox Trot Ballad

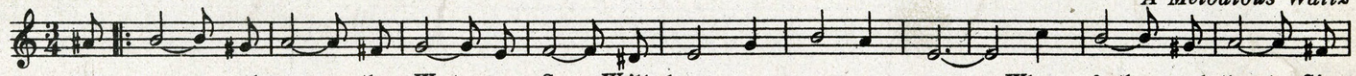


WHY?— must I be lone-ly, oh WHY?— can't there be on-ly just one lit-tle sweet-heart for me, like YOU!

Copyright 1929 by Sherman, Clay & Co., San Francisco

BESIDE THE WESTERN SEA

A Melodious Waltz



Just you— and me,— the West-ern Sea— We'll dream our cares a - way.— Where feath-ered throats, Sing

Copyright 1929 by Sherman, Clay & Co., San Francisco

RAG DOLL

A Novelty Fox Trot

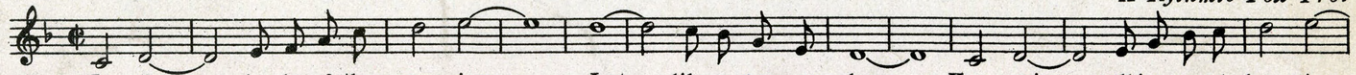


There is a mem-o-ry, ev-er re-call-ing to me, My lit-tle rag-ged-y doll;— She was a sight to view, with-out a

Copyright 1928 by Sherman, Clay & Co., San Francisco

LADY OF THE MORNING

A Rhythmic Fox Trot

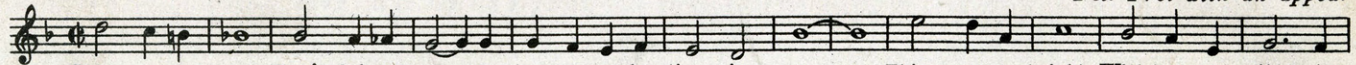


La-dy,— la-dy of the morn-ing— Just— like a sum-mer breeze.— Your voice— call-ing me at dawn-ing—

Copyright 1929 by Sherman, Clay & Co., San Francisco

AS LONG AS YOU BELIEVE IN ME

Fox Trot with an appeal



Skies may be grey, They'll fade a - way As long as you be-lieve in me— Things not so bright, Will turn out right, As

Copyright 1929 by Sherman, Clay & Co., San Francisco

THE DOLL DANCE

A Favorite everywhere



What a pe-cul-iar tune, Thrill-ing me night and noon, What a pe-cul-iar tune.— Has such a fun-ny swing, It's such a

Copyright 1927 by Sherman, Clay & Co., San Francisco

AVALON TOWN

Ballad Fox Trot Hit

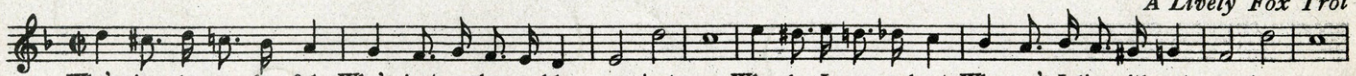


Think of an eve-ning in June, Un-der a crys-tal like moon Think of an old Span-ish tune, You're in Av - a-lon Town.

Copyright 1928 by Sherman, Clay & Co., San Francisco

YOU JUST YOU

A Lively Fox Trot



Who's simp-ly won-der-ful, Who's just a-dor-a-ble, you just you. Who do I rave a-bout, Who can't I livewith-out, you just you.

Copyright 1929 by Sherman, Clay & Co., San Francisco

Copies for sale
wherever music is sold.

Sherman,  Clay & Co.

These numbers can also
be had for your phonograph
and player piano.

SAN FRANCISCO