

# ICH LIEBE DICH

(I LOVE YOU)

BY FRED FISHER & MARTIN BROONES

CLARENCE BROWN'S  
PRODUCTION

## WONDER of WOMEN

*with*

LEWIS STONE, PEGGY WOOD  
LEILA HYAMS

*M*

*Metro-Goldwyn-Mayer  
Picture*



AT CLOSE OF DAY

ICH LIEBE DICH  
(I LOVE YOU)

ROBBINS MUSIC CORPORATION

799 Seventh Avenue, New York

# Try this Melody Over

## At Close Of Day

Featured in Metro-Goldwyn-Mayer's "Wonder Of Women"

By { RAYMOND KLAGES  
JESSE GREER  
MARTIN BROONES

Andante moderato

mf

The piano introduction consists of two staves. The right hand features a melodic line with eighth and sixteenth notes, while the left hand provides a harmonic accompaniment with chords and moving bass lines.

p

The piano accompaniment for the first vocal line continues with a similar harmonic structure, featuring chords and a melodic line in the right hand.

When night is fall - ing, My heart's re - call - ing

p

This system contains the first vocal line and its corresponding piano accompaniment. The vocal line is written in a single staff, and the piano accompaniment is in two staves.

Mem - ries en - thrall - ing That com - fort me.

This system contains the second vocal line and its corresponding piano accompaniment. The vocal line is written in a single staff, and the piano accompaniment is in two staves.

Copyright 1929 by Metro-Goldwyn-Mayer Corp. New York, N.Y.  
Exclusive Distributors Robbins Music Corporation, 799 Seventh Ave., New York, N.Y.

Complete Song May Be Purchased From Your Favorite Dealer

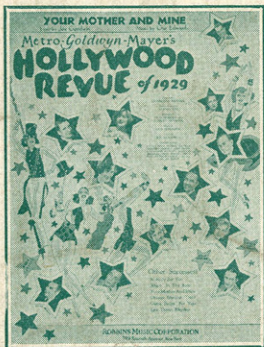
# Two Hits from "Hollywood Revue of 1929"

## Your Mother and Mine

Lyric by  
JOE GOODWIN

Featured in the Metro-Goldwyn-Mayer "Hollywood Revue of 1929"

Music by  
GUS EDWARDS



Slow

Chorus

Your moth - er was she ev - er wrong — My

*p*

moth - er made life just a song — When you were a kid — Where, did you

SH 579-3 Ukulele arrangement by Hank Linet  
Copyrighted 1929 by Metro-Goldwyn-Mayer Corp. New York, N.Y.  
Exclusive Distributors Robbins Music Corporation, 799 Seventh Ave., New York, N.Y.

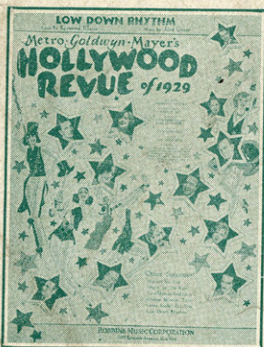
Tune Ukulele  
A D F# B

## Low Down Rhythm

Featured in the Metro-Goldwyn-Mayer "Hollywood Revue of 1929"

Lyric by  
RAYMOND KLAGES

Music by  
JESSE GREER



Moderato

Chorus

You've got - ta take up Low Down Rhy - thm Take it up —

*rit.* *mf a tempo*

take it up — to the skies That hot and

SH 583-4 Ukulele arrangement by Hank Linet  
Copyright 1929 by Metro-Goldwyn-Mayer Corp. New York, N.Y.  
Exclusive Distributors Robbins Music Corporation, 799 Seventh Ave., New York, N.Y.

Tune Ukulele  
A D F# B  
Place Capo  
on 1st Fret

Complete Song May Be Purchased From Your Favorite Dealer