

EV'RY DAY AWAY FROM YOU

Lyric by
CHARLES TOBIAS

Music by
JAY MILLS



Published by
Shapiro, Bernstein & Co.
MUSIC PUBLISHERS
COR. BROADWAY & 47th STREET
New York.
Reg. U.S. Pat. Off.

MADE IN
USA

Try this over on your Piano

I'll Always Be In Love With You

Tune Ukulele
G C E A

Words and Music by
HERMAN RUBY
-and-
GREEN and STEPT

Chorus

Sweet - heart, if you should stray, a mil - lion miles a - way I'll
al - ways be in love with you And tho you find more
bliss, in some - one els-es kiss, I'll al - ways be in love with

Copyright 1929 by Green & Stept Inc. 745 Seventh Ave. N.Y. City.
Sole Selling Agents-Shapiro, Bernstein & Co. Inc. Cor. Broadway & 47th Street, New York.
International Copyright Secured. Made in U. S. A. All Rights Reserved.
Campbell, Connelly & Co. 10 Denmark St. Charing Cross Road London W.C. 2 England. J. Albert & Son 137-139 King St. Sydney, Australia.

Complete Copies may be had where you bought this

JUST
T
GI
DA
FO
19
Cont
BROA
MUSICA
SONG
H
Arran
FOX
WAL
BL
CHAR
PIAN
OF
Price 50

SM8001

Ev'ry Day Away From You

Lyric by
CHARLES TOBIAS

Uke in C
Tune
G C E A

Music by
JAY MILLS

Moderato

Piano

Musical notation for the piano introduction, featuring a treble and bass clef with a key signature of one flat and a 4/4 time signature. The tempo is marked 'Moderato'. The piece begins with a forte (f) dynamic. The melody is primarily in the treble clef, while the bass clef provides a harmonic accompaniment.

Continuation of the piano introduction. It includes a section marked '8va' (octave) and 'fz' (forzando), followed by a section marked 'mp' (mezzo-piano). The notation continues with treble and bass clefs.

Voice

Voice and piano accompaniment for the first verse. The voice part is written on a single staff with guitar chord diagrams above it. The piano accompaniment is on a grand staff. The lyrics are: "Once a - gain I'm writ - ing to you to - night I don't know why I do - / Not so long a - go you were all my own And I was happy then -".

Voice and piano accompaniment for the second verse. The voice part is written on a single staff with guitar chord diagrams above it. The piano accompaniment is on a grand staff. The lyrics are: "I nev - er hear from you, dear Once a - gain I'm hop - ing you'll phone or / For that was when you loved me Now I can't be - lieve that I'm all a -".

Copyright. MCMXXIX by Shapiro, Bernstein & Co., Inc. Cor. Broadway & 47th Street, New York
Propiedad Asegurada Para La Republica Mexicana MCMXXIX Todos Los Derechos Reservados
Derechos De Reproduccion Reservados En Cuba y Sud y Central America

International Copyright Secured

ALL RIGHTS RESERVED
Including Public Performance For Profit

Made in U. S. A.

write _____ I'm so un - hap - py _____ Since you're out of my sight: _____
 lone _____ It's might-y dif - f'rent _____ Than the day that I've known: _____

CHORUS

Ev-ry day a - way from you _____ Seems an-oth-er year _____ Ev-ry day a -

way from you _____ Brings an-oth-er tear _____ Nev-er do a thing all day

long Have-nt slept a wink since you're gone Thinking all a - bout you, with-out you

I can't go on — Ev-ry morning I just say — What is there in store? —

— Know-ing that I'll start my day — Like the day be - fore — Wait-ing at the

door - step for your step That's all I do — Ev'ry day a - way from you, —

— sweet - heart Ev-ry day a - heart. —

Every Day Away etc. - 3

THE SENSATIONAL PIANO NOVELTY.
"FASHIONETTE"
 Also Published for SONG and ORCHESTRA

OUT
 HE
EM
NCE
LIO
 or
29
 binning
 ALWAYS
 L COMEDY
 DANCE
TS
 ged as
TROTS
TZES
JES
ND
ESTONS
 of
SOLO
ILY
 * postpaid

**YOUR
MUSIC DEALER**

**CARRIES THESE SONG
SUCCESSSES**

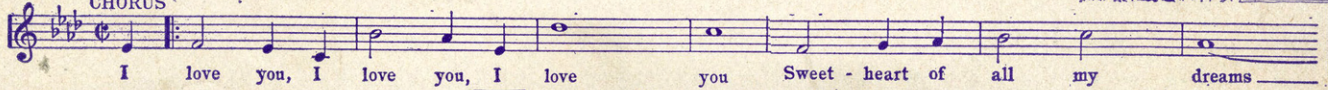


on all
Records and Rolls

I LOVE YOU — I LOVE YOU — I LOVE YOU —
SWEETHEART OF ALL MY DREAMS

THE Ballad Hit. of the Year!

CHORUS



I love you, I love you, I love you Sweet-heart of all my dreams

Copyright MCMXXVIII by Shapiro, Bernstein & Co., Inc.

WHO WOULDN'T BE JEALOUS OF YOU ?

The big Dance success — A wonderful Song!

CHORUS



Who would-n't be jeal-ous of a girl like you And who would-n't be watch

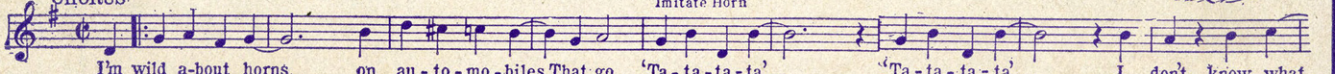
Copyright MCMXXVIII by Shapiro, Bernstein & Co., Inc.

**I'M WILD ABOUT HORNS ON AUTOMOBILES
THAT GO 'TA-TA-TA-TA'**

A really different novelty Song!

CHORUS

Imitate Horn



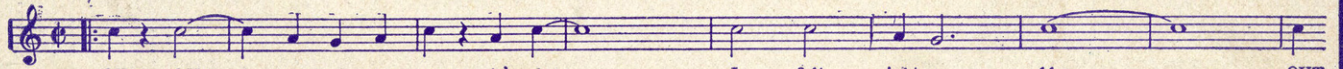
I'm wild a-bout horns on au-to-mo-biles That go. 'Ta-ta-ta-ta' 'Ta-ta-ta-ta' I don't know what.

Copyright MCMXXVIII by Shapiro, Bernstein & Co., Inc.

OUTSIDE

A comedy Song hit full of Laughs, Laughs, Laughs!

CHORUS



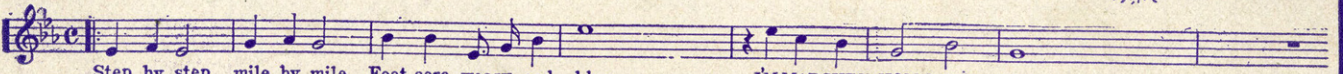
OUT - SIDE — the rain was pour - in' down I felt might-y blue — OUT

Copyright MCMXXVIII by Shapiro, Bernstein & Co., Inc.

**STEP BY STEP — MILE BY MILE
I'M MARCHING HOME TO YOU**

Howard Brothers' big Hit in George White's Scandals

CHORUS



Step by step, mile by mile Foot-sore, weary and blue I'M MARCHING HOME TO YOU

Copyright MCMXXIX by Shapiro, Bernstein & Co., Inc.

FASHIONETTE

A standard Piano Solo — also Published Vocally and for Orchestra



Copyright MCMXXVIII by Shapiro, Bernstein & Co., Inc.