

*amp*

# The End of the Lonesome Trail

from  
FIRST  
NATIONAL &  
VITAPHONE  
REG. TRADE MARK  
PICTURE

## The Great Divide

*starring*  
DOROTHY  
MACKALL

SI SI SENOR  
THE END OF THE LONE-  
SOME TRAIL



M. WITMARK & SONS

NEW YORK  
Printed in U.S.A.



*Lyric by*  
HERMAN RUBY  
*Music by*  
RAY PERKINS

*Ukulele Acc.*



# FOUR POPULAR NOVELTIES

## Pretty Little You

Words by  
BEN RYAN

Music by  
VIOLINSKY

REFRAIN

Ev-ry lit-tle star that shines a - bove, knows the rea-son,  
 dear, why I'm in love, Pret-ty lit-tle  
 you, you know that I love you.

## Maybe-Who Knows?

By JOHNNY TUCKER  
JOE SCHUSTER  
and RUTH ETTING

REFRAIN

May - be {she's} lone - some, May - be {she's} glad,  
 {he's} {he's}  
 Feel - ing un - hap - py {She} may - be sad,  
 {He}  
 May - be, who knows?

## You Made Me Love You Why Did You?

CARMEN LOMBARDO  
and MICKEY KIPPEL

REFRAIN

Why did you make me love you, Why did you? -  
 You kept me think - ing of you, Why did you? -  
 If you had said I had no right to you, -

## Where The Butterflies Kiss The Buttercups Good-Night

Words by  
HARRY PEASE and  
CHARLES O'FLYNN

Music by  
ED. G. NELSON

REFRAIN

"We'll go down the lane, to the end of the lane, Take a  
 cou-ple of steps to the right, Where the but-ter-flies kiss the  
 but-ter - cups, good - night; -

Price 35¢ each postpaid

PUBLISHED AND COPYRIGHTED BY

M. WITMARK & SONS, DEPT W. 1650 BROADWAY, NEW YORK

WARNER  
BROS. &

VITAPHONE  
REG. TRADE MARK

SINGING  
PICTURES

FIRST  
NATIONAL &

VITAPHONE  
REG. TRADE MARK

SINGING  
PICTURES

## THEME SONGS

FROM  
THE COLLECTION OF  
Gene Blakely

### LET ME HAVE MY DREAMS

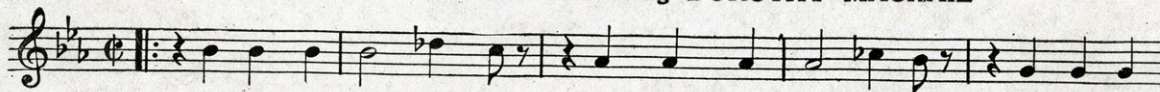
by GRANT CLARK and HARRY AKST  
from ON WITH THE SHOW—sung by BETTY COMPSON and SALLY O'NEILL



Please don't take a-way my dreams, Through-out all this time— I have dreamt you're

### THE END OF THE LONESOME TRAIL

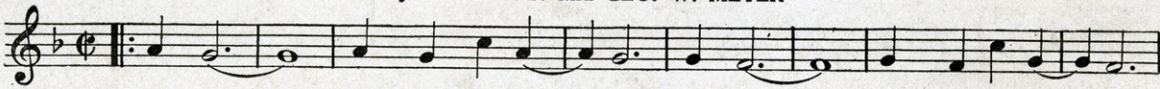
by HERMAN RUBY and RAY PERKINS  
from THE GREAT DIVIDE—starring DOROTHY MACKAIL



No more am I gloom-y You brought the sun to me, The day that

### SOMEONE

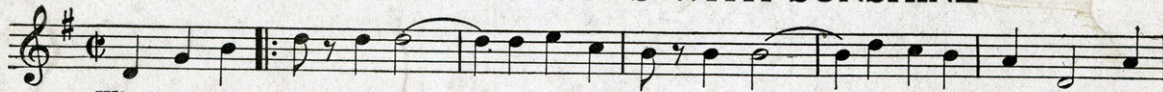
from THE GIRL FROM WOOLWORTHS—starring ALICE WHITE  
by AL. BRYAN and GEO. W. MEYER



Some-one— knows when I'm lone - ly, Some-one— thinks of me on - ly

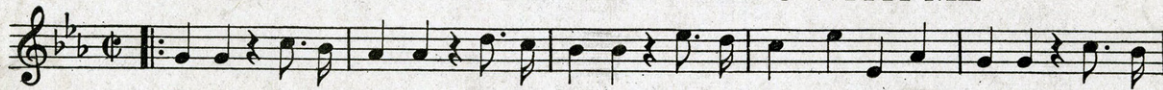
### FOUR BIG SONG HITS FROM THE GOLD DIGGERS OF BROADWAY

#### PAINTING THE CLOUDS WITH SUNSHINE



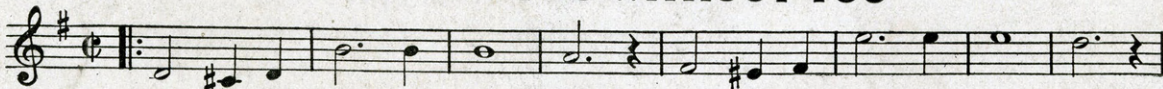
When I pre - tend I'm gay— I nev-er feel that way,— I'm on ly paint-ing the

#### TIP TOE THROUGH THE TULIPS WITH ME



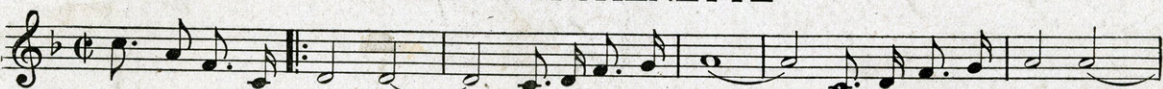
Tip-toe - to the win-dow, by the win-dow, That is where I'll be, Come tip-toe thru the

#### WHAT WILL I DO WITHOUT YOU



What will I do with - out you? I'll be so blue with - out you,

#### IN A KITCHENETTE



Wan-na girl who looks good— In a kit-chen-ette,— Wan-na girl who cooks good,

Copyright MCMXXIX by M. Witmark & Sons

M. WITMARK & SONS · 1650 BROADWAY · NEW YORK