

3  
4/16/77

# WHEN SWEET SUSIE GOES STEPPIN' BY

by WHITEY KAUFMAN, FRED KELLY

and IRVING BIBO

With Ukulele Arrangement

*Esther Morgan*



INTRODUCED by  
JIM BARTON

*Politzer*

MADE  
IN  
U.S.A.

BIBO, BLOEDON & LANG INC.  
MUSIC PUBLISHERS  
1595 BROADWAY  
NEW YORK



SM7912

# 2 When Sweet Susie Goes Steppin' By

Ukulele Arr. by  
MAY SINGHI BREEN  
"The Ukulele Lady"

Tune Ukulele  
or Banjulele Banjo  
A D F# B  
Put Capo on 1st fret

By WHITEY KAUFMAN  
FRED KELLY  
and IRVING BIBO

Moderato

Piano

*f*

The piano introduction consists of two staves. The right hand plays chords and single notes in a rhythmic pattern, while the left hand plays a steady bass line. The tempo is marked 'Moderato' and the dynamic is 'f'.

Vamp

*mf*

The piano vamp section features a repeating rhythmic pattern. The right hand has a melodic line with grace notes, and the left hand provides harmonic support. The dynamic is 'mf'.

Voice

Hey, if you ev - er meet my ba - by The min - ute that you  
Right aft - er ev - 'ry one has seen us They ask me if her

*p*

The first verse of the song. The vocal line is on a treble clef staff with guitar chord diagrams above it. The piano accompaniment is on a grand staff. The dynamic is 'p'.

greet that ba - by you'll a - gree with me ——— That  
name is Ve - nus and if I'd say yes ——— They'd

The second verse of the song. The vocal line continues with the same notation as the first verse. The piano accompaniment provides harmonic support.

she's as sweet— as can be She fills the fell - ows  
all be - lieve— me I guess Each time I take her

with am - bi - tion I've got a lot of op - po - si - tion  
out a - walk - ing The boys a - round the town start talk - ing

They all stare— at her so ev - ery - where that we go.—  
They all say— she's a dream Sweet as peach - es and cream.—

Chorus

Birds and bees, Be - gin to sing They think it's the first of Spring  
Old men act like boys of ten, Young boys act like grown up men

*p-f*

when sweet Su - sie goes step-pin' by,  
when sweet Su - sie goes step-pin' by,

All the fel - lows en - vy me They're as jeal - ous as can be  
All the traf - fic al - ways stops They call out the traf - fic cops

When sweet Su - sie goes step-pin' by ———— And ev - 'ry  
When sweet Su - sie goes step-pin' by ———— I'll tell the

time I take her walk - in' down the av - en - ue.  
world that girl has got a lot of style and grace.

Peo - ple stare - And de - clare - Don't they make a  
 What I mean - She's a queen - And she's just turned

hap - py pair - Fel - lows sigh and say "oh my"  
 sev - en - teen - She's a gal you can't re - fuse

tip their hats and wink their eye When sweet Su - sie goes step - pin'  
 ev en Cal' would say "I choose" When sweet Su - sie goes step - pin'

by. by.

# MUSIC FOLIOS FOR EVERY HOME

FOR SALE EVERYWHERE



**A TWO IN ONE FOLIO containing 100 PAGES**  
 With instrumental solo part for  
**Violin, Mandolin, "C" Melody Sax,  
 Flute, Banjo and Oboe**  
 The world's finest selection of Home  
 Songs, Children's Songs, Operatic, College,  
 Patriotic, Christmas, Sacred, Southern, French,  
 German, Italian, Spanish and other songs.

Copyright 1926, BIBO, BLOEDON & LANG, INC., N.Y.



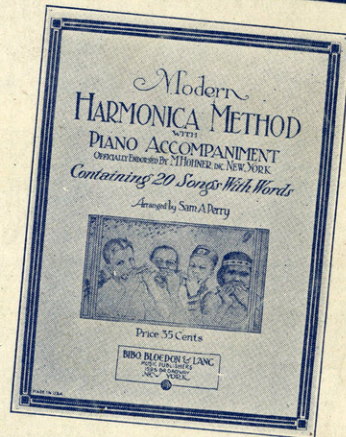
**A DISTINCT NOVELTY with FULL INSTRUCTIONS**  
 Containing Piano Tricks and Imitations  
 for Ukulele, Chimes, Organ, Music Box,  
 Banjo, Bells, Tom-Tom, Trains, Birds, Bag Pipes,  
 Fife and Drum, Steel Guitar, Dulcimer, Breaks  
 in playing Popular Music, Breaks and Endings  
 and a TRAVESTY MOVIE LOGUE with fun and  
 laughter for the Home and Movies.

Copyright 1927, BIBO, BLOEDON & LANG, INC., N.Y.



**A TWO IN ONE FOLIO CONTAINING 100 PAGES**  
 With separate instrumental  
 solo part for Violin, Mandolin,  
 "C" Melody Sax., Cello, Flute,  
 Banjo, etc.

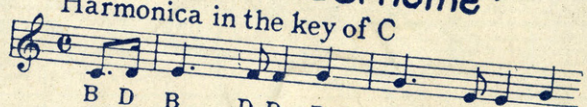
Copyright 1927, BIBO, BLOEDON & LANG, INC., N.Y.



**with PIANO ACCOMPANIMENT**  
 Containing 20 songs with words  
 (Officially Endorsed by M. HOHNER INC., N.Y.)

"Home Sweet Home"

Harmonica in the key of C



B	D	B	D	B	B	B	B
4	4	5	5	6	6	5	6
Mid	pleas	ures	and	pal	a	ces	

Copyright 1926, BIBO, BLOEDON & LANG, INC., N.Y.

Poltzner