

8/18/79

A WORTH WEIL SONG

Rosette

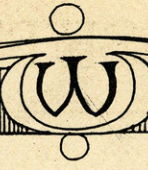
LYRIC BY CHARLES NEWMAN

MUSIC BY CARMEN LOMBARDO



MILTON WEIL MUSIC CO. INC.
 54 W. Randolph St., CHICAGO

FRANSLEY
 STUDIOS
 CHICAGO



Beautiful

Words by
HAVEN GILLESPIE

Music by
LARRY SHAY

CHORUS

Ti - ny lit - tle toes, — A turned up shi - ny lit - tle nose, — To me she's

might - y like a rose and ev - ry bo - dy knows she's beau - ti - ful, —

Might - y hard to make, — But dog - gone might - y good to take — The day that

Copyright MCMXXVII by Milton Weil Music Co., Chicago, Ill.
International Copyright Secured MADE IN U.S.A. All Rights Reserved

COPIES ON SALE WHEREVER MUSIC IS SOLD
The MILTON WEIL MUSIC CO. Chicago, Ill.
This Number can also be had for your Phonograph or Player Piano

SM 7838

ROSETTE

Words by
CHARLES NEWMAN

Piano Tune Uke in C
G C E A

Music by
CARMEN LOMBARDO

A Rube Bennett Arrangement

Valse Moderato

Introduction for piano, 3/4 time, starting with a forte (*f*) dynamic. The music features a waltz-like melody in the right hand and a supporting bass line in the left hand.

Vocal entry with piano accompaniment. The vocal line begins with the lyrics "Just like a Each night I'm". The piano accompaniment includes a guitar chord diagram above the staff and a dynamic marking of *pp. con espressione*.

Vocal line and piano accompaniment. The vocal line includes the lyrics: "gar - den with - out a rose, My life is emp - ty Ro - dream - ing of you Ro - sette, Dream - ing I'm with you a -". The piano accompaniment includes guitar chord diagrams above the staff.

Vocal line and piano accompaniment. The vocal line includes the lyrics: "sette, gain, For you are the one rose that my heart Please tell me my dreams will come true Ro -". The piano accompaniment includes guitar chord diagrams above the staff.

knows, Tell me that you won't for - get;
 sette, Say I'm not dream-ing in vain;

CHORUS *Tenderly*

RO - SETTE, RO - SETTE, I can't for - get, That

P-mf

day I heard you whis-per "Good - bye" Tho' we're a -

part, You're in my heart, RO - SETTE true love like our love can't

WORTH-WEIL SONGS

BEAUTIFUL



Ti - ny lit - tle toes, — A turned up shi - ny lit - tle nose, — To me she's mighty like a rose and

Copyright MCMXXVII by Milton Weil Music Co., Chicago, Ill.

AFTER I'VE CALLED YOU SWEETHEART



Af - ter I've called you Sweet - heart, How can I call you friend? — Why live a

Copyright MCMXXVII by Milton Weil Music Co., Chicago, Ill.

EVERYWHERE YOU GO



Ev - 'ry where you go, — Sun - shine fol - lows you, —

Copyright MCMXXVII by Milton Weil Music Co., Chicago, Ill.

I, MYSELF, AND ME.



Always to - geth - er, We get a - long, An - y old weath - er, Life is a song, For I, MY -

Copyright MCMXXVIII by Milton Weil Music Co., Chicago, Ill.

SWEETEST LITTLE HONEY



Sweet - est lit - tle hon - ey, Who do you love, I won - der who it could be, Sweet - est lit - tle hon - ey,

Copyright MCMXXVIII by Milton Weil Music Co., Chicago, Ill.

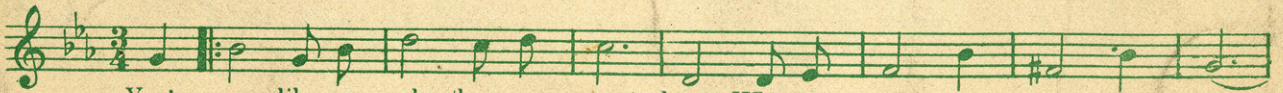
MY BABY CAME HOME



If the bird - ies sing like ev - 'ry - thing in the morn - ing, — They're giv - ing you warn - ing, —

Copyright MCMXXVIII by Milton Weil Music Co., Chicago, Ill.

YOU'RE MORE LIKE A PAL THAN A SWEETHEART



You're more like a pal than a sweet - heart, What a pal you are to me, —

Copyright MCMXXVII by Milton Weil Music Co., Chicago, Ill.