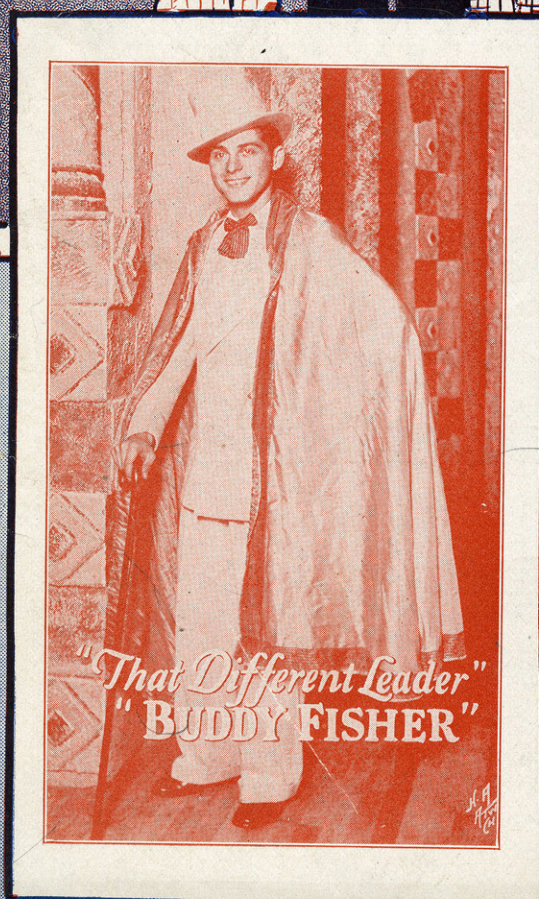


8/17/85

OH! YOU HAVE NO IDEA



*With
UKULELE
Arrangement*



*"That Different Leader"
"BUDDY FISHER"*

*Words by
Phil Ponce
Music by
Dan Dougherty*

Barbelle

MADE IN U.S.A.

AGER, YELLEN & BORNSTEIN INC.
MUSIC PUBLISHERS
745-7TH. AVE  NEW YORK

SM 7811

Oh! You Have No Idea

Words by
PHIL PONCE

Tune Ukulele
or Banjulele Banjo
A D F# B
Put Capo on 1st fret

Music by
DAN DOUGHERTY

Moderato

The piano introduction consists of two staves. The right hand features a melodic line with eighth notes and chords, while the left hand provides a steady bass accompaniment with chords and single notes. The tempo is marked 'Moderato' and the dynamics start with a forte 'f'.

VOICE

There's a
There she

Vamp

The first vocal line is on a single staff with a treble clef and a key signature of two flats. It begins with a rest, followed by the lyrics 'There's a' and 'There she'. Below the vocal line is a piano accompaniment with two staves. The right hand has chords and some melodic fragments, while the left hand has a simple bass line. The tempo is marked 'Vamp' and the dynamics are marked 'p'.

girl, there's a girl Has the old men wish-in' for new am-bi-tion
goes! there she goes! An-y time she pass-es, get out your glass-es

The second vocal line continues the melody from the first line. It features three voice icons above the staff. The lyrics are: 'girl, there's a girl Has the old men wish-in' for new am-bi-tion goes! there she goes! An-y time she pass-es, get out your glass-es'. The piano accompaniment continues with two staves, maintaining the 'Vamp' tempo and 'p' dynamics.

Ev - 'ry time they see her pass - in' a long _____ What a
'Cause you're bound to see the class of the town _____ Nev - er

girl! what a girl! She's a real live pet - ter, a sweet-heart get - ter;
late, for a date; Broth - er, you can bet it, and don't for - get it.

When I tell you I'm not tell - in' you wrong. _____
She picks who she wants and turns the rest down. _____

CHORUS

Has she lips that the boys a - dore? Does she know what she's got 'em for?
Does she make all the col - lege boys, Spend their room rent to buy her toys?

p-f

Oh — you have no — i - de-a! Has she eyes that are
Does she vamp all the

full of love? Do they show what she's think-in' of? Oh — you have no — i -
frosch and sops, Jun-i-ors, Sen-i-ors and e - ven profs?

de - a! She's got that what-sie, what-sie, what what
She's got a lot of 'lov - in' charms say

folks can't ex-plain — And say that what-sie, what-sie, what would
 she is a dream — And with that lot of lov-in' charms she'd

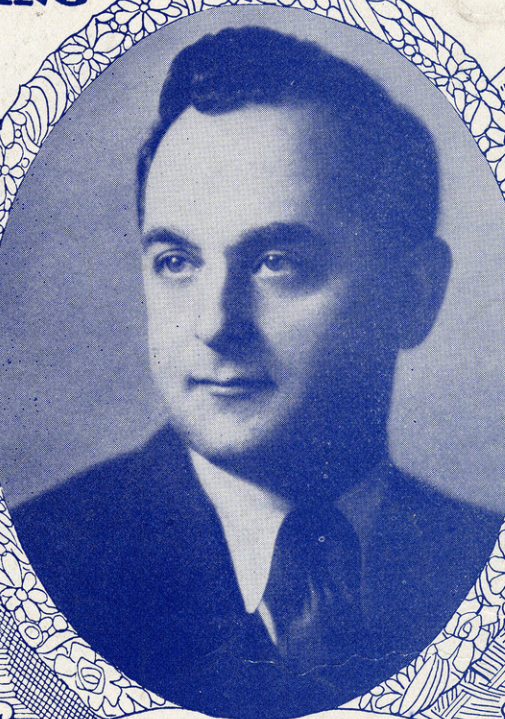
make young Lind-bergh burn his plane! Does she step when you take her out?
 wreck the Princeton foot-ball team! Can she vamp an-y full grown male?

Does she know what its all a-bout? Oh — you have no — i —
 Could she make Har-vard cheer for Yale?

de - a! de - a!

MEET THE WRITERS

OF THE SONGS YOU SING



JACK YELLEN

MILTON AGER

Here's A Partial List Of Their Successes

AIN'T SHE SWEET!
 CRAZY WORDS—CRAZY
 TUNE (Vo-do-de-o)
 I WONDER WHAT'S BECOME
 OF SALLY
 FORGIVE ME
 IF YOU DON'T LOVE ME
 DREAM KISSES
 IS SHE MY GIRL-FRIEND?
 COULD I? I CERTAINLY
 COULD
 I STILL LOVE YOU

↑ MY PET
 MAMA GOES WHERE PAPA
 GOES
 LOVIN' SAM
 LOUISVILLE LOU
 HARD-HEARTED HANNAH
 HULA LOU
 BIG BAD BILL
 HARD-TO-GET GERTIE
 SHE DON'T WANNA
 CHEATIN' ON ME
 ARE YOU SORRY?
 †

↑ I WISH I HAD MY OLD GAL
 BACK AGAIN
 SHE KNOWS HER ONIONS
 ARE YOU FROM DIXIE?
 A YOUNG MAN'S FANCY
 EVERYTHING IS PEACHES
 DOWN IN GEORGIA
 FRECKLES
 DOWN BY THE O-HI-O
 I'M WAITING FOR SHIPS
 THAT NEVER COME IN
 JOHNNY'S IN TOWN
 †

And The Hits From "RAIN OR SHINE"

"YELLEN & AGER HITS" ARE PUBLISHED BY

AGER, YELLEN & BORNSTEIN INC.

MUSIC PUBLISHERS

745 SEVENTH AVE



NEW YORK