

Bessie Rubin

# MOONLIGHT MADNESS

by  
LOU DAVIS  
and  
J. FRED COOTS



MADE  
IN  
U.S.A.

EDITION  
CLASSIQUE

Pod  
Lane

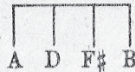
DE SYLVA BROWN AND HENDERSON, INC  
Music Publishers  
DE SYLVA BROWN AND HENDERSON BUILDING 745 SEVENTH AVENUE NEW YORK

2 SM7795

# Moonlight Madness

(Then You Were Gone)

Tune Ukulele



Put Capo on 1st Fret

By LOU DAVIS and  
J. FRED COOTS

Moderato

Piano

*p* *rit*

Voice

The world was sleep - ing      The stars were peep - ing  
I of - ten meas - ure      The dreams I treas - ure

*a tempo*

The moon - beams kissed the sand.  
Each one a price - less pearl.

And thru the gloam - ing      I found you roam - ing a -  
You filled your mis - sion,      You're but a vis - ion from

Arr. by Joseph M. Weiss

Copyright 1928 by De Sylva, Brown and Henderson Inc., 745 Seventh Ave., New York

Copyrighted in South America by Harry Kosarin, Rio de Janeiro

International Copyright Secured

Made in U. S. A.

All Rights Reserved

lone dream - dear land With heart a - fire —  
The hopes I squan - dered

There came de - sire — It thrilled me through and through.  
The roads I wan - dered Just pray - ing we will meet.

E - ven though you're gone — That night of nights lives on.  
My sleep - y eyes you kissed Then van - ished like the mist.

Chorus

Thru — the palms you came with — your soul a - flame

Moon - light mad-ness, then you were gone.

*L.H.*

3

It was love at sight. Thrills — just filled the night.

Moon - light mad-ness, then you were gone.

3

Ve - ry soon I learned — That you loved eve-ry-thing ro - man -

tic, How your kiss-es burned,— Their mem-ry near-ly drives me

fran - tic I heard the pas-sion call I  
 (optional) The sea of thrills we crossed We

gave my soul, my all Moon-light mad-ness,  
 met I loved and lost

L.H.

Then you were gone. gone.



Other

DE SYLVA, BROWN AND HENDERSON INC.

Song Hits

# SONNY BOY

Tune Ukulele

A D F# B  
Put capo on 1st fret

By AL JOLSON,  
B. G. DE SYLVA, LEW BROWN  
and RAY HENDERSON

CHORUS

When there are gray skies, I don't mind the gray skies  
You make them blue, Son-ny Boy Friends may for-

Copyright 1928 by De Sylva, Brown and Henderson Inc., 745 Seventh Ave., New York

# YOU'LL NEVER KNOW

Tune Ukulele

G C E A

By AL JOLSON,  
ARTHUR FRANKLIN  
and BILLY ROSE

CHORUS

No mat-ter, no mat-ter, how much I miss you,  
YOU'LL NEV-ER KNOW YOU'LL NEV-ER KNOW That yearn-ing re-

Copyright 1928 by De Sylva, Brown and Henderson Inc., 745 Seventh Ave., New York

COPIES ON SALE WHEREVER MUSIC IS SOLD  
THIS NUMBER CAN ALSO BE HAD FOR YOUR PHONOGRAPH AND PLAYER PIANO

DE SYLVA, BROWN AND HENDERSON, INC.  
Music Publishers

DE SYLVA, BROWN AND HENDERSON BUILDING 745 SEVENTH AVENUE NEW YORK