

A WALTZ SONG

Live and Love

MELODY BY WILLIAM AXT & DAVID MENDOZA

LYRIC BY RAYMOND KLAGES



MADE in U.S.A.

With
Ukulele
Arrangement

Theme Song of the
Metro-Goldwyn-Mayer Picture

JOHN GILBERT
in
The Masks of the Devil
with Alma Rubens

ROBBINS MUSIC CORPORATION
799 Seventh Avenue, New York

Try this Melody Over

Cross Roads

Lyric by
RAYMOND KLAGES

Theme of Metro-Goldwyn-Mayer's Picture "Show People"

Melody by
WILLIAM AXT &
DAVID MENDOZA

Refrain

I'm at the Cross-Roads, — life's cross-roads — and we must drift a-

p rit. *a tempo*

-part. — Where-e'er you go dear, — I know dear — that

you'll be in my heart. — I'll al-ways

Ukulele arrangement
by Hank Linet

Copyright 1928 by Robbins Music Corporation, New York
International Copyright Secured All Rights Reserved

Tune Ukulele
A D F# B

Complete Song May Be Purchased From Your Favorite Dealer

SM7770

LIVE AND LOVE

Theme of Metro-Goldwyn-Mayer's Production "The Masks of the Devil"

Lyric by
RAYMOND KLAGES

Melody by
WILLIAM AXT
and DAVID MENDOZA

Valse tempo (*Slow*)

mf

dim.

The piano introduction is in 3/4 time, starting with a mezzo-forte (mf) dynamic. It features a waltz-like melody in the right hand and a simple bass line in the left hand. The piece concludes with a *dim.* (diminuendo) marking.

There's one de - sire, lives deep in my heart To
Love is a thing, that eyes can not mask This

a tempo

p

rit.

The first vocal line is accompanied by piano accompaniment. The tempo is marked *a tempo*. The piano accompaniment begins with a *rit.* (ritardando) marking and a piano (*p*) dynamic. The lyrics are: "There's one de - sire, lives deep in my heart To Love is a thing, that eyes can not mask This".

hold you, to love you for aye. ——— You seem to in - spire, what I
se - cret I try to re - veal. ——— Just one burn - ing ques - tion, my

The second vocal line continues the melody. The piano accompaniment provides harmonic support. The lyrics are: "hold you, to love you for aye. ——— You seem to in - spire, what I se - cret I try to re - veal. ——— Just one burn - ing ques - tion, my".

Ukulele arrangemet by Hank Linet

Tune Ukulele A D F# B

long to im - part For here's, what my heart tries to say. _____
heart tries to ask Dear one, can't you tell how I feel. _____

rit.

REFRAIN

Let's live, and let us love dear one for - ev - er Then we will
a tempo

p

dwell, with - in the spell of hap - pi - ness. _____ Let's hope, a love like

ours will nev - er sev - er All thru the years, we'll ban - ish

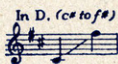
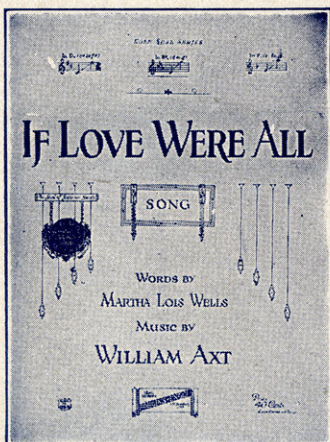
fears, with each car - ress. ————— Let's give our hearts to love, in sweet sur -

-rend - er E - ter - nal bliss, will come with this till life is o'er. —————

— So press your lips to mine and whis - per, sweet - heart "I Love You" And

we will Live and Love, for - ev - er - more. Let's - more. —————

Try this Melody Over



IF LOVE WERE ALL

Words by
Martha Lois Wells

Music by
William Axt

Major Edward Bowes, Managing Director Capitol Theatre, says:
"If Love Were All" is the greatest American Song.

Valse Lento
Refrain

If Love Were All, oh, If Love Were
All, I'd be for - ev - er by your side. I would
kiss a - way your tears when you cried; When the sun shines bright,

p
R.H. il marcato basso dolce

R.H.

G 101-

Copyright MCMXXII by Robbins Music Corp. New York
International Copyright Secured

Complete Song May Be Purchased From Your Favorite Dealer