

Little Mother

WITH UKULELE ARRANGEMENT

Lullaby Waltz
From the
William Fox Production
FOUR SONS

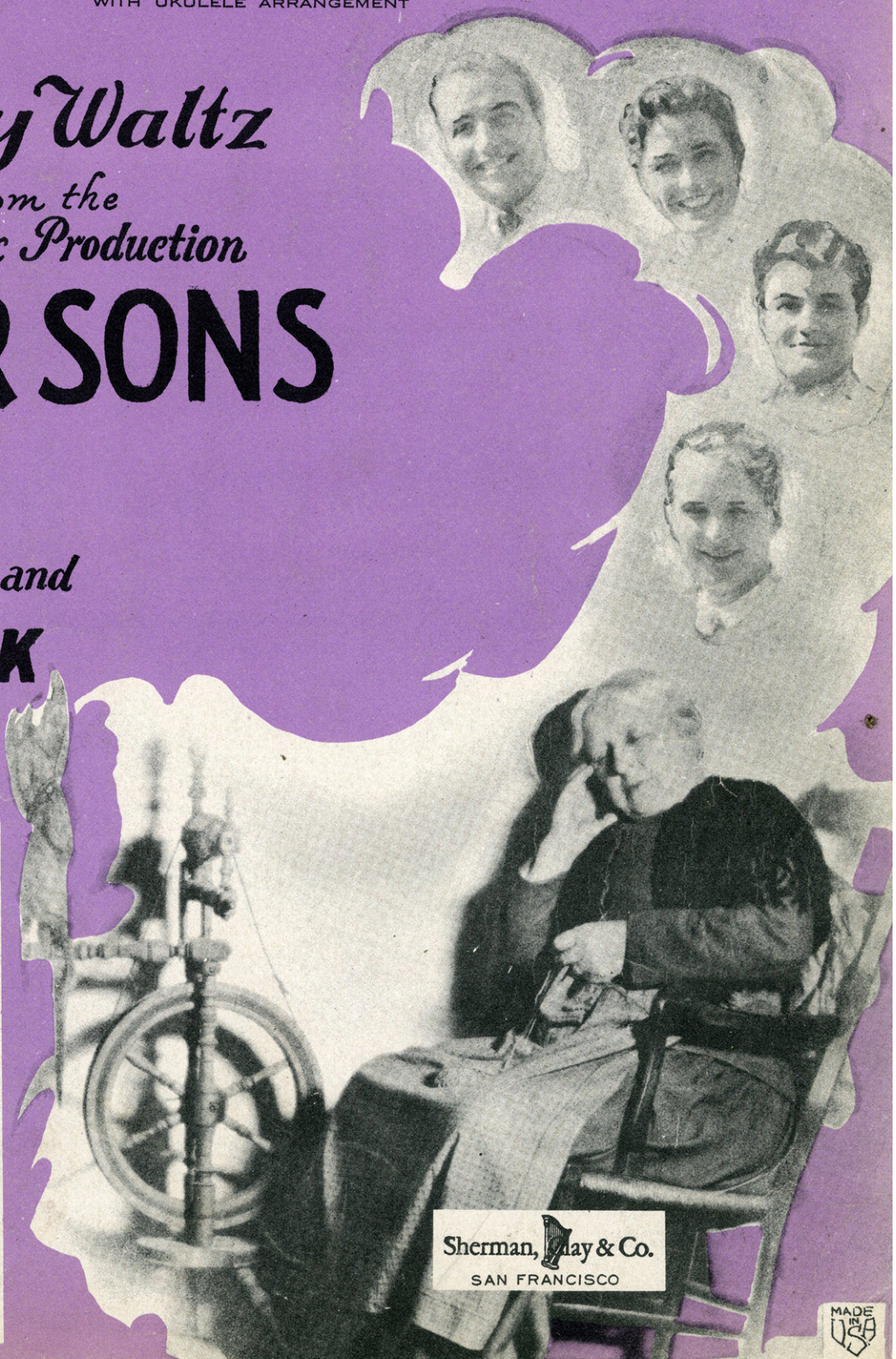
by

ERNO RAPEE and
LEW POLLACK

WRITERS of
"CHARMAINE"
"DIANE" etc.



Featured by
LOU WHITE
Chief Organist, Roxy Theatre



Sherman,  & Co.
SAN FRANCISCO

MADE
USA

Lorena

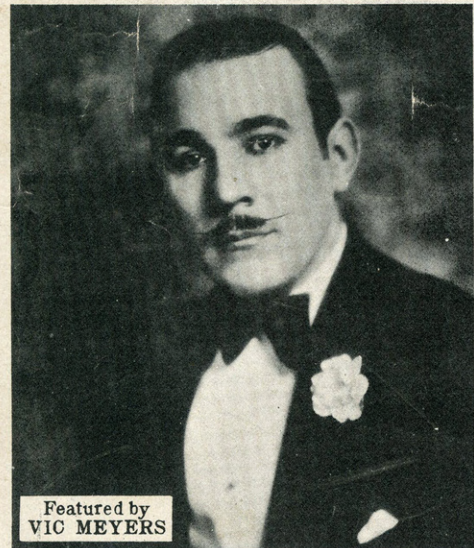
Little Mother

WITH UKULELE ARRANGEMENT

Lullaby Waltz From the William Fox Production **FOUR SONS**

by
**ERNO RAPEE and
LEW POLLACK**

WRITERS of
"CHARMAINE"
"DIANE" etc.



Featured by
VIC MEYERS



Er. Path, 47
Misses' 2-10-26 Music Service
75 E. Seventh St. Miami

Sherman,  & Co.
SAN FRANCISCO



Little Mother (*Mütterchen*)

Lullaby Waltz

*From the
William Fox Production*

FOUR SONS

by

ERNO RAPEE *and*
LEW POLLACK

WRITERS of
"CHARMAINE"
"DIANE" etc.

With Ukelele Arrangement


Sherman,  Clay & Co.
SAN FRANCISCO



BESIDE A LAZY STREAM

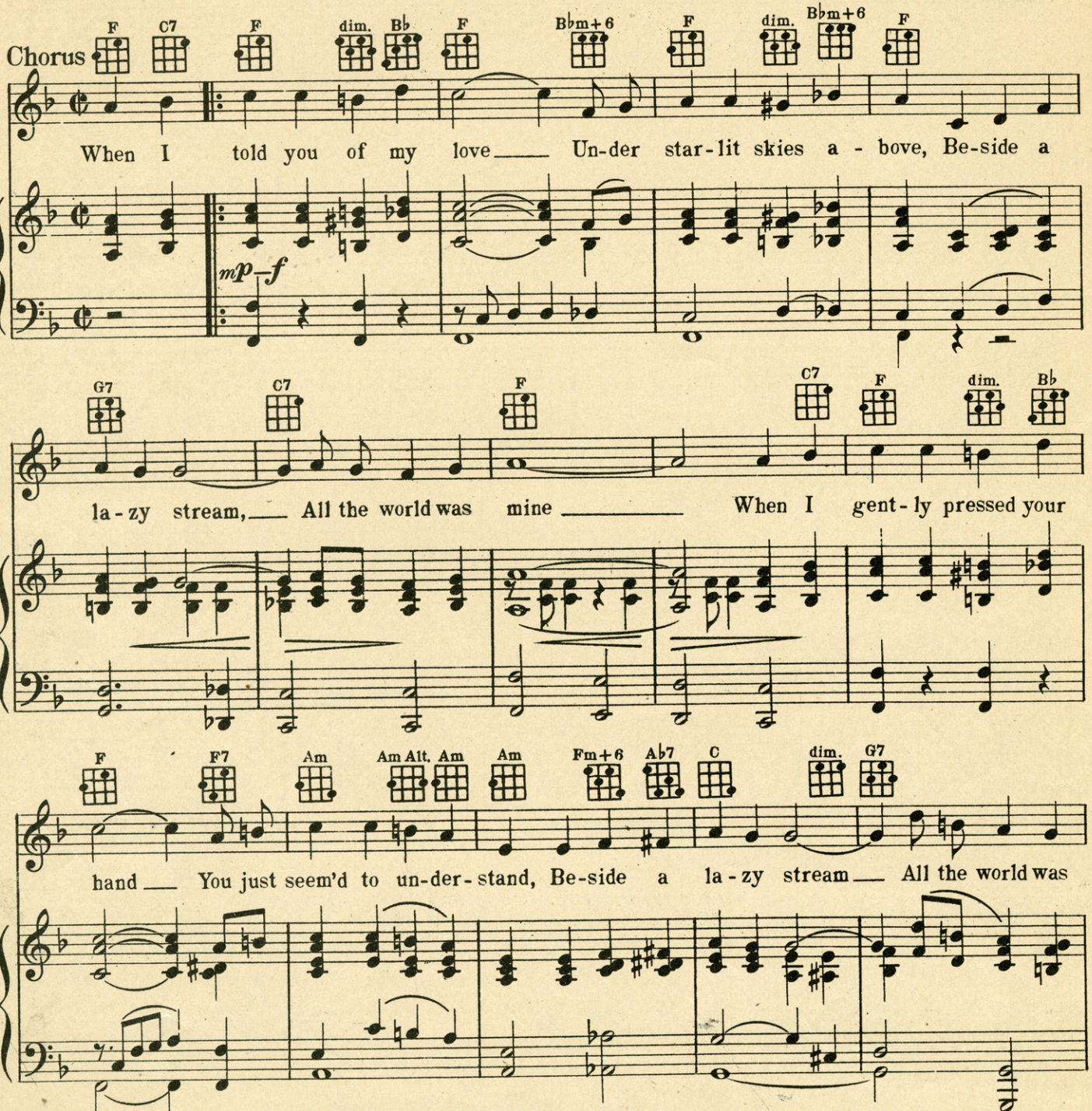
(ALL THE WORLD WAS MINE)

Tune Uke
G C E A



Words and Music by
BUD COOPER, NICK LUCAS
and SAM H. STEPT

Chorus



When I told you of my love — Un-der star-lit skies a - bove, Be-side a
la - zy stream, — All the world was mine — When I gent - ly pressed your
hand — You just seem'd to un-der-stand, Be-side a la - zy stream — All the world was

Copyright MCMXXVIII by Sherman, Clay & Co., San Francisco
International Copyright Secured and Reserved
Keith, Prowse & Co. Ltd., London, W.1. — Allan's Proprietary, Ltd., Melbourne, Australia

PUBLISHED BY

Sherman, Clay & Co.

SAN FRANCISCO

IDOLIZING

Words and Music by
SAM MESSENHEIMER
IRVING ABRAHAMSON &
RAY WEST

Tune Uke thus: **G C E A**
 Tenor Banjo, Mandola, Guitar etc.
 Play Chords marked on diagrams.

Chorus

I - do - liz - ing you is all that seems
 worth while And by your side I'll lin - ger
 too be - cause of your dear smile

Copyright MCMXXVI by West Coast Music Publishers; Los Angeles, Calif.
 Copyright transferred MCMXXVI by Sherman, Clay & Co., San Francisco
 International Copyright Secured and Reserved
 Keith Prowse & Co. Ltd., London, W. L. Allan's Proprietary, Ltd Melbourne, Australia

PUBLISHED BY

Sherman, Clay & Co.

SAN FRANCISCO

SM 7768

Little Mother

Tune Ukulele
or Banjulele Banjo
A D F# B
Put Capo on 1st fret

By ERNO RAPEE and
LEW POLLACK

Valse moderato

The piano introduction consists of two staves in 3/4 time, key of B-flat major. The right hand plays a series of chords and single notes, while the left hand provides a simple bass line. The tempo is marked 'Valse moderato'.

Ukulele Arr. by MAY SINGHI BREEN
"The Ukulele Lady"

VOICE



The first system shows the vocal line and piano accompaniment. The vocal line begins with the lyrics: "When the day is done the Lit-tle Moth-er dear, it's". The piano accompaniment features a mix of chords and melodic lines in both hands.



The second system continues the vocal and piano accompaniment. The vocal line lyrics are: "set-ting sun sinks in - to a sky of blue There's a vi - sion of The ve - ry clear What you've done thru all these years Yet it's splen-did too To".



The third system concludes the vocal and piano accompaniment. The vocal line lyrics are: "one I love Lit-tle Moth-er dear I mean you I can see a trace in think that you Can still wear a smile thru your tears Ev-'ry night I pray, there'll".

your sweet face Of the one who un - der - stands And the
 come a day When I gaze on all your charms Lit - tle

work you've known is clear-ly shown By the wrink-les in your toil worn hands
 Moth-er mine just once a-gain Let me nes - tle close-ly in your arms

rit.

CHORUS

Lit - tle Moth-er Moth - er mine, There's no oth - er

p - mf

Moth - er mine, Al-though I know that we are far a - part,

[Chord symbols]

ad. lib.

No one can take you dear, out of my heart, Lit-tle Moth-er

[Chord symbols]

You're di - vine, Keep on smil-ing all the time

[Chord symbols]

I pray that "He," spares you for me — Lit-tle Moth-er Moth-er

[Chord symbols]

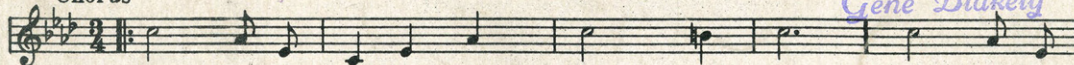
mine. Moth-er Moth-er - mine.



PALS OF LONG AGO

FROM THE COLLECTION OF
Gene Blakely

Chorus



Where are you now, Pals of long a - go, Friends that were

Copyright MCMXXVII by Sherman, Clay & Co., San Francisco.

IF I SHOULD LOSE YOU

Ballad Fox Trot Hit
with an appeal.

Chorus



If I should lose you — If ev-er I lose you, — Where could I wan - der, — what could I do? —

Copyright MCMXXVII by Sherman, Clay & Co., San Francisco.

DOLL DANCE

Fox Trot Hit



What a pe - cul - iar tune, Thrill-ing me night and noon, What a pe - cul - iar tune. — Has such a

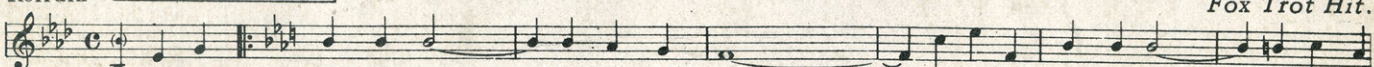
Copyright MCMXXVII by Sherman, Clay & Co., San Francisco

THE WINDING TRAIL

Melodious
Fox Trot Hit.

Refrain

Melody of "Old Refrain".
Published by Special Permission of
Carl Fischer Inc. New York



I'm on the wind - ing trail — to home sweet home — I'm on the home - ward road — no more to

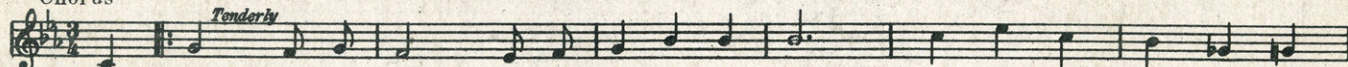
Copyright MCMXXVII by Sherman, Clay & Co., San Francisco

SOMEBODY LIED ABOUT ME

Waltz Ballad.

Chorus

Tenderly



When some - bod - y told you that I've been un - true, Some - bod - y lied a - bout

Copyright MCMXXVII by Sherman, Clay & Co., San Francisco

SCHOOL DAY SWEETHEARTS

A favorite everywhere.

CHORUS
a tempo



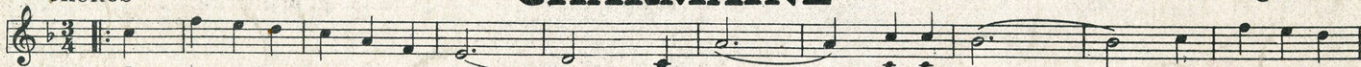
Can't we be the same school-day sweet - hearts? Let us wan - der back once more, — Thru the lit - tle

Copyright MCMXXVIII by Sherman, Clay & Co., San Francisco

CHARMAINE

Waltz Hit with Ukulele arrangement.

CHORUS



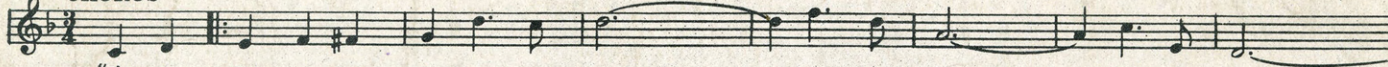
I won - der why you keep me wait - ing, Char - maine — cries in vain, — I won - der when

Copyright 1926 by BELWIN, Inc., N.Y.C.
Copyright assigned 1927 to Sherman, Clay & Co., San Francisco

DIANE

Melodious Waltz Hit.

CHORUS



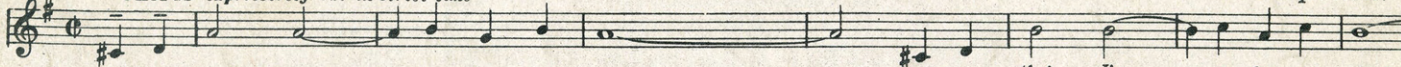
"I'm in Heav - en when I see you smile — Smile for me — my Di - ane —

Copyright MCMXXVII by Sherman, Clay & Co., San Francisco

DO YOU LOVE ME?

Fox Trot Ballad
with a punch.

Chorus *expressively but in strict time*



Do you love me — when skies are gray? — Ev - en tho' I'm — so far a - way? —

Copyright MCMXXVII by Sherman, Clay & Co., San Francisco.

ESTRELLITA

Beautiful Ballad.

mf



Oh shine on to - night In your pa - lace a - bove Your sil - ver - y light Leads me
Tu e - res es - tre - lla mi fa - ro de a - mor Tu sa - bes que pron - to he

Copyright MCMXXVII by Sherman, Clay & Co., San Francisco

Copies for sale
wherever music is sold.

PUBLISHED BY
Sherman,  & Co.
SAN FRANCISCO

These numbers can also
be had for your phonograph
and player piano.

Love Waltz from Wm Fox's "7th HEAVEN"
I'M IN HEAVEN WHEN I SEE YOU SMILE

DIANE

Ukulele Arr. by
May Singhi Breen
"The Ukulele Lady"

Tune Ukulele
or Banjulele Banjo

G C E A

By
ERNO RAPEE
and LEW POLLACK
("Writers of "Charmaine")

CHORUS

"I'm in Heav - en when I see you smile _____ Smile for
me _____ my Di - ane _____ And tho' ev - ry - thing's
dark all the while _____ I can see _____ you Di -

(Optional)

Copyright 1927 by Sherman, Clay & Co., San Francisco
International Copyright Secured and Reserved
Keith Prowse & Co. Ltd., London, W.I. — Allan's Proprietary, Ltd., Melbourne, Australia

PUBLISHED BY

Sherman,  & Co.

SAN FRANCISCO