

# I LOVED YOU THEN

AS I LOVE YOU NOW



*Theme Song*  
*for*  
METRO • GOLDWYN • MAYER  
P R O D U C T I O N  
"OUR DANCING DAUGHTERS"  
*starring* JOAN CRAWFORD

WORDS BY  
BALLARD MACDONALD  
MUSIC BY  
AXT and MENDOZA

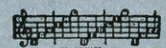


MADE IN  
USA



CODE WORD  
"LOVED"

Irving Berlin, Inc.  
MUSIC PUBLISHERS  
1607 Broadway New York



# I Loved You Then As I Love You Now

Words by  
BALLARD MACDONALD

Tune Ukulele or  
BANJULELE BANJO

G C E A

Music by  
AXT and MENDOZA

Valse moderato

Piano

VOICE

With your breath up - on my  
Tho' an - oth - er came be -

*mp*

cheek,  
tween, With my heart too full to speak,  
Yet no oth - er has there been,

Ukulele Arr. by MAY SINGHI BREEN

Copyright 1928 by IRVING BERLIN, Inc. 1607 Broadway, N.Y.C.  
International Copyright Secured Made in U.S.A. All Rights Reserved

THE  
NUM  
ca  
be h  
for y  
Phonog  
or y  
Play  
Pia

Love I found at last in your charms.  
Who could take your place in my heart.

By a most un-luck-y chance, In the mid-dle of that  
Love like mine is not in vain, We are meant to meet a -

dance, Fate flung me in - to an - oth - er one's arms. I  
gain, Tho' Fate di - rects that our roads lie a - part. I

**CHORUS**

loved you then as I love you

now, You are mine in my thoughts al - ways.

This system contains the first two lines of music. The top line is the vocal melody in a treble clef with a key signature of one flat (Bb). The lyrics are "now, You are mine in my thoughts al - ways." The piano accompaniment consists of two staves: a right-hand treble staff and a left-hand bass staff. The piano part features a steady eighth-note accompaniment in the left hand and a more melodic line in the right hand. There are two guitar chord diagrams above the vocal line, one at the beginning and one at the end of the system.

Love comes but once to the

This system contains the third and fourth lines of music. The vocal line continues with the lyrics "Love comes but once to the". The piano accompaniment continues with similar rhythmic patterns. A guitar chord diagram is positioned above the vocal line at the end of the system.

hearts of men, When it does then it al - ways

This system contains the fifth and sixth lines of music. The vocal line has the lyrics "hearts of men, When it does then it al - ways". The piano accompaniment continues. There are three guitar chord diagrams above the vocal line, one at the beginning, one in the middle, and one at the end of the system.

stays, You filled a spot in an

This system contains the seventh and eighth lines of music. The vocal line has the lyrics "stays, You filled a spot in an". The piano accompaniment concludes the system. There are four guitar chord diagrams above the vocal line, one at the beginning, one in the middle, and two at the end of the system.

emp - ty heart, And tho' per - haps in the

end we part, I'll al - ways dream of what

*rall.* *a tempo*

might have been, For I love you

*rall.*

now as I loved you then. I then.

1. 2.

*a tempo*

S  
BER  
ad  
our  
raph  
ur  
er -  
to



“WHAT’LL I DO”—“ALL ALONE”—“ALWAYS”—“REMEMBER”

and now

IRVING BERLIN’S

# ROSES OF YESTERDAY

CHORUS

Ros-es of yes-ter-day — fad-ed and thrown a-way — love is a pale bouquet

— of yester-day’s ros - es      Roses were once in bloom. — here in my

lone-ly room      now there’s a faint perfume      of yes-ter-day’s ros - es

Copyright MCMXXVIII by IRVING BERLIN, Inc., 1607 B’way, N.Y.  
International Copyright Secured    Made in U.S.A.    All Right Reserved

COPIES ON SALE WHEREVER MUSIC IS SOLD  
This Number can also be had for your Phonograph and Player Piano