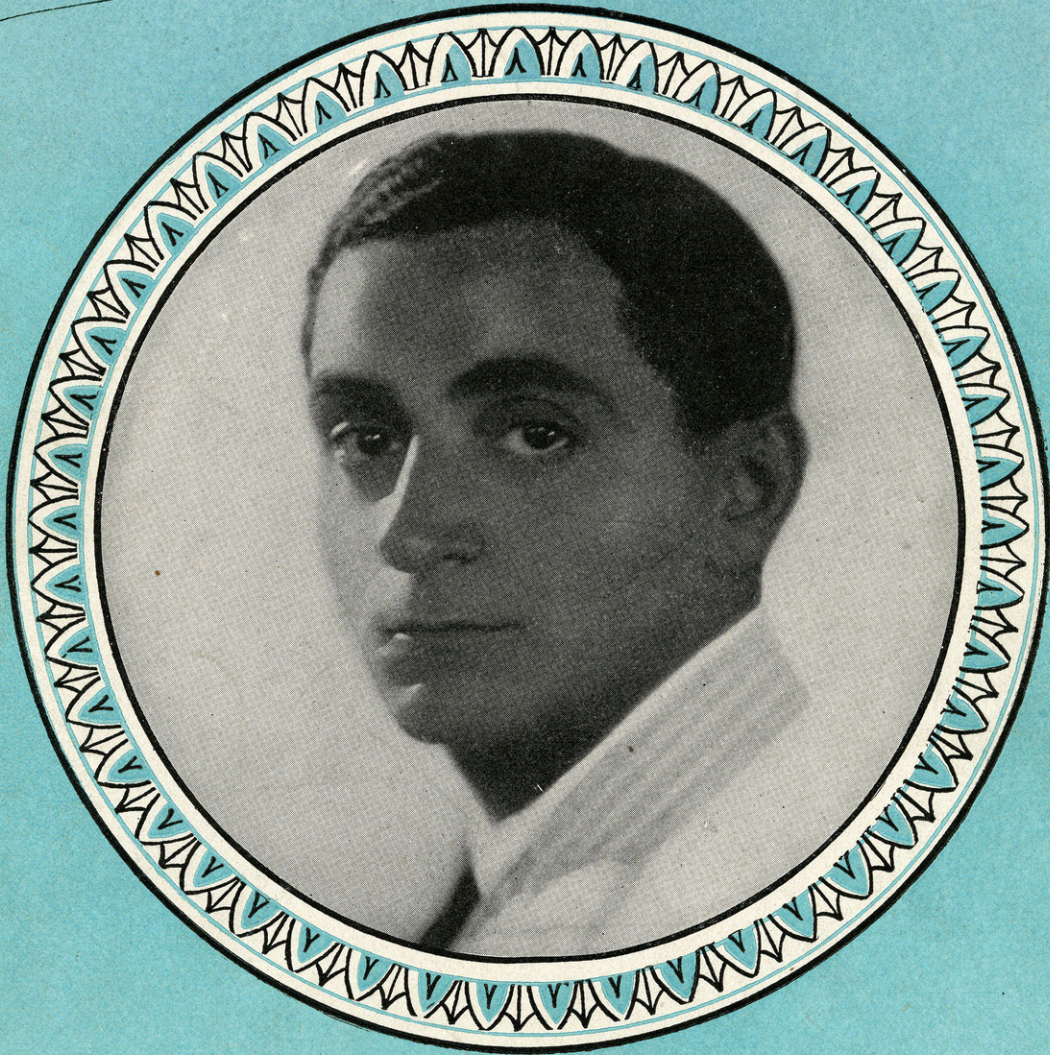


IRVING BERLIN'S I CAN'T DO WITHOUT YOU

*Gene
Shakely*



ORDER CODE
"WITHOUTYOU"



Irving Berlin, Inc.
MUSIC PUBLISHERS
1607 Broadway New York

MADE IN
USA

LIT

SM 7707
2

I Can't Do Without You

Tune Ukulele
or Banjulele Banjo

A D F# B

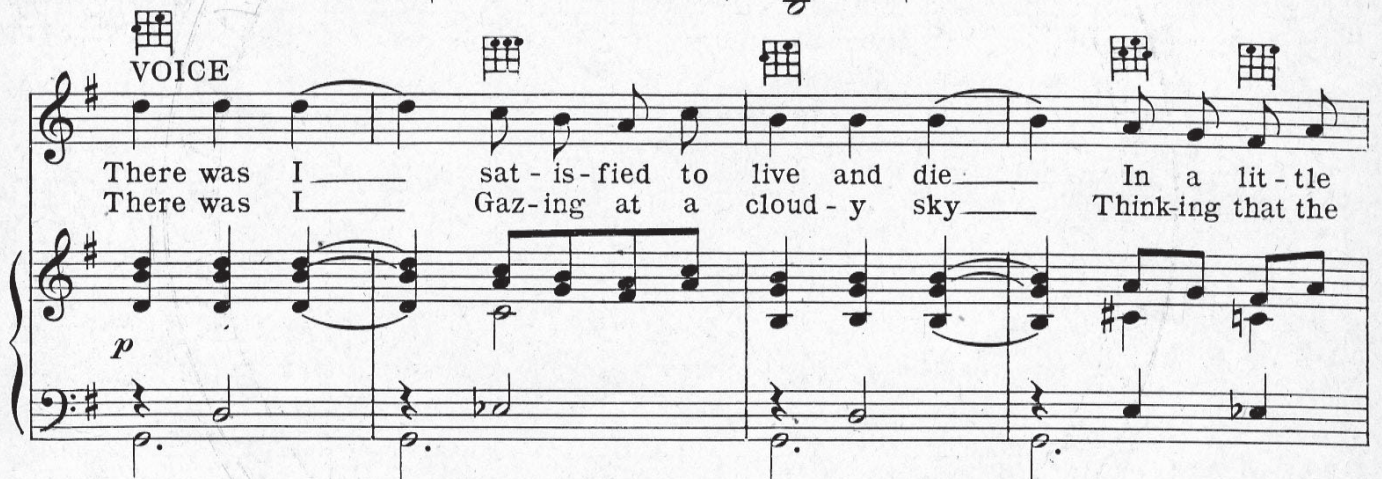
By IRVING BERLIN

Valse moderato

PIANO



VOICE



There was I sat - is - fied to live and die In a lit - tle
There was I Gaz - ing at a cloud - y sky Thinking that the



world where life was all ar - ranged
clouds were all there was to see

Ukulele arr. by MAY SINGHI BREEN

There were you in a world I nev - er knew — Sud - den - ly we
 There were you point - ing to a sky of blue — Show - ing me how

met and ev 'ry thing was changed
 bright a day could real ly be

rall.

CHORUS

All my life, I did with - out you

p-f

But now I can't do With -

- out you _____ All my life, I nev - er

missed you _____ Un - til I kissed you _____

I nev - er missed you _____

All through life I went _____ And thought that I was

meant _____ to live and be con - tent _____ With -

colla voce

- out you Then I put my arms a -

- bout you _____ And now I can't do _____ With -

- out you _____ - out you _____

rit.

STANDARDS OF THE WORLD

"STERLING" ON SILVER
"IRVING BERLIN" ON SONGS

HIS LATEST FOX-TROT

IRVING BERLIN'S

SUNSHINE

FROM
"THE COLLECTION OF
Gene Blakely

CHORUS

Give the blues a chase — Find a sun-ny place — Go and paint your

face — with sun - shine — Pay your doc - tor bills —

— Throw a - way his pills — You can cure your ills — with

Copyright MCMXXVIII by IRVING BERLIN, Inc., 1607 Broadway N.Y.C.
International Copyright Secured All Rights Reserved

COPIES ON SALE WHEREVER MUSIC IS SOLD
This Number can also be had for your Phonograph and Player Piano