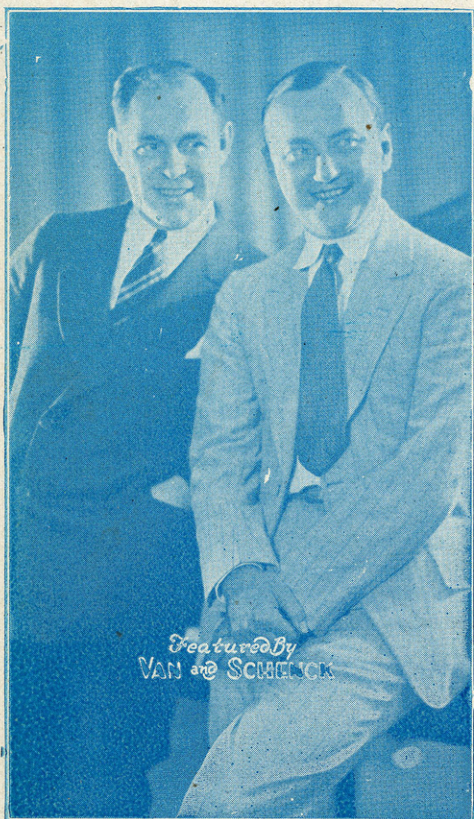


# HERE'S THAT PARTY NOW IN PERSON

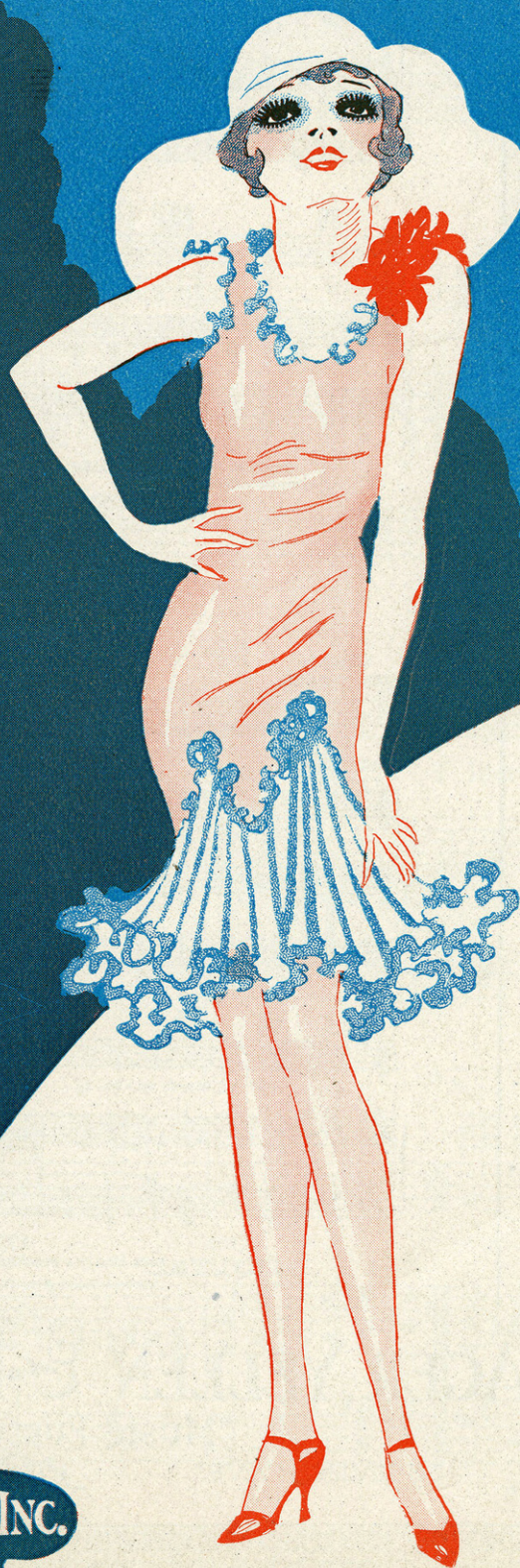
Words By  
*Jack Yellen*  
Music By  
*Milton Ager*

With  
**UKULELE**  
Arrangement



Featured By  
VAN and SCHELLACK

MADE  
U.S.A.



Barbelle

15

**AGER, YELLEN & BORNSTEIN INC.**  
MUSIC PUBLISHERS  
745 SEVENTH AVE  NEW YORK

# BITS OF HITS

from the  
Ager,  
Yellen &  
Bornstein  
Catalog



If Not  
Obtainable  
Mail  
35 Cents  
in Stamps  
for  
a Copy  
to Us



## If You Don't Love Me.

Words by JACK YELLEN. Music by MILTON AGER

Tune Ukulele  
B $\flat$  E $\flat$  G C

CHORUS

The birds are sing - ing - What do I care what they're sing - ing,

If you don't love me?

Copyright 1928 by AGER, YELLEN & BORNSTEIN, Inc. 745-7th Ave. N. Y. C.  
Performing Rights Reserved International Copyright Secured  
Lawrence Wright Music Co. London, Eng.

## My Pet

Words by JACK YELLEN. Music by MILTON AGER

Tune Ukulele or Banjulele Banjo  
A D F $\sharp$  B

Allegro moderato Vamp

CHORUS

My pet, How I love her! My pet, speak - ing of her Say,

I bet there's no - bo - dy like my pet.

Copyright 1928 by AGER, YELLEN & BORNSTEIN Inc. 745-7th Ave. New York City  
Performing Rights Reserved International Copyright Secured  
Lawrence Wright Music Co. London, Eng.

These  
Songs  
May Be  
Obtained  
for Your  
Player  
Piano  
or  
Talking  
Machine



For Sale  
Wherever  
Music  
Is Sold



# AGER, YELLEN & BORNSTEIN INC.

MUSIC PUBLISHERS

745 SEVENTH AVE.



NEW YORK

SM7695

# HERE'S THAT PARTY NOW IN PERSON

Tune Uke  
A D F# B

Words by  
JACK YELLEN

Music by  
MILTON AGER

*Allegro Moderato*

The piano introduction consists of two staves. The right hand plays a melody of eighth and sixteenth notes, while the left hand provides a harmonic accompaniment with chords and single notes. The tempo is marked *Allegro Moderato* and the dynamic is *f*.

VOICE

The first line of the song features a vocal line with lyrics and a piano accompaniment. The piano part includes a section marked *Vamp* with a *p* dynamic. The lyrics are: "I know how Mister Rom-e - o felt a- I know now why Mark An-ton - y fell for".

The second line of the song continues the vocal line and piano accompaniment. The lyrics are: "-bout Miss Jul-i - et. Cle - o of the Nile. I'm in love, and let me state It knock'd me diz-zy, but I'm sure he was not to blame. For this sweet party I'd".

boy! it's great. It's some-bod - y I hard - ly know, She's a par - ty I just  
do the same. Look at that per - son - al - i - ty, Get the fig - ure and the

met. Just the type that makes 'em stare. — There she is right o - ver there.  
smile. Look her o - ver, gen - tle - men, — While I tell the world a - gain.

## CHORUS

Well! well! well! Speak - ing of — Some - one that I sure could love, Here's that

*p-f*

par - ty now in per - - son. Is - n't she nice and fresh? Not a pic - ture

in the flesh, Here's that par-ty now in per - son. Those I've had

— Have been wrong part-ies some-how, I'm so glad I've got the

right par-ty now. Well! well! well! If some-day I love, hon- or

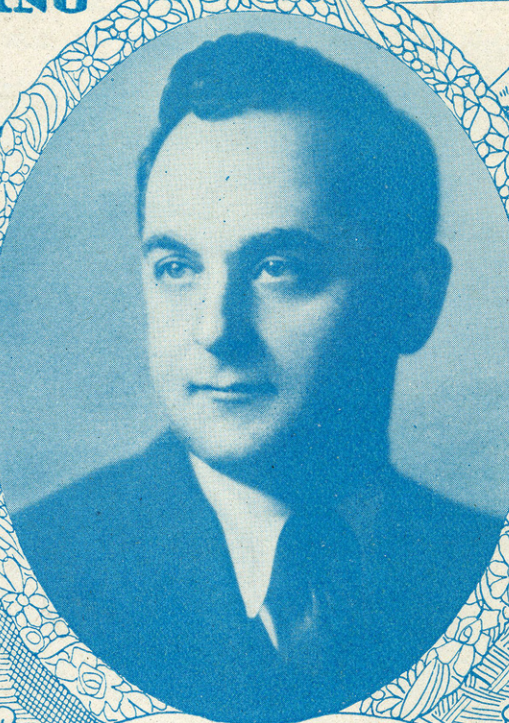
and o-bey\_ Here's that par-ty now in per - son. son.

# MEET THE WRITERS

OF THE SONGS  
YOU SING



JACK YELLEN



MILTON AGER

*Here's A Partial List Of Their Successes*

AIN'T-SHE SWEET!  
CRAZY WORDS—CRAZY  
TUNE (Vo-do-de-o)  
I WONDER WHAT'S BECOME  
OF SALLY  
FORGIVE ME  
IF YOU DON'T LOVE ME  
DREAM KISSES  
IS SHE MY GIRL-FRIEND?  
COULD I? I CERTAINLY  
COULD  
I STILL LOVE YOU

MY PET  
MAMA GOES WHERE PAPA  
GOES  
LOVIN' SAM  
LOUISVILLE LOU  
HARD-HEARTED HANNAH  
HULA LOU  
BIG BAD BILL  
HARD-TO-GET GERTIE  
SHE DON'T WANNA  
CHEATIN' ON ME  
ARE YOU SORRY?

I WISH I HAD MY OLD GAL  
BACK AGAIN  
SHE KNOWS HER ONIONS  
ARE YOU FROM DIXIE?  
A YOUNG MAN'S FANCY  
EVERYTHING IS PEACHES  
DOWN IN GEORGIA  
FRECKLES  
DOWN BY THE O-HI-O  
I'M WAITING FOR SHIPS  
THAT NEVER COME IN  
JOHNNY'S IN TOWN

*And The Hits From "RAIN OR SHINE"*

"YELLEN & AGER HITS" ARE PUBLISHED BY

AGER, YELLEN & BORNSTEIN INC.

MUSIC PUBLISHERS

745 SEVENTH AVE



NEW YORK