

15

# DON'T HOLD EVERYTHING

(LET EVERYTHING GO)

ALEX. A. AARONS & VINTON FREEDLEY  
PRESENT  
THE NEW MUSICAL COMEDY

# HOLD EVERYTHING!

BOOKS AND MUSIC BY B. G. DE SYLVA, LEW BROWN & RAY HENDERSON

HENRY A. YOHANAN



HELEN  
VANDORP  
MORGAN

BOOK BY  
B. G. DE SYLVA  
AND  
JACK MCGOWAN

DANCES & ENSEMBLES BY  
JACK HASKELL  
AND  
SAM ROSE

DE SYLVA, BROWN AND HENDERSON, INC.  
Music Publishers  
DE SYLVA, BROWN AND HENDERSON BUILDING  
745 SEVENTH AVENUE NEW YORK

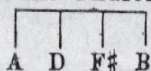
YOU'RE THE CREAM IN MY COFFEE  
TO KNOW YOU IS TO LOVE YOU  
DON'T HOLD EVERYTHING  
(LET EVERYTHING GO)  
TOO GOOD TO BE TRUE

SM 7648

# Don't Hold Everything

(Let Everything Go)

Tune Ukulele



Put Capo on 1st Fret

By B.G. DE SYLVA,  
LEW BROWN and  
RAY HENDERSON

Moderato

Piano

Voice

All mood - y folks Sad, brood - y folks Should read

Old Doc Freud, For in - stance, his preach - ing is,

His teach - ing is, Friends, don't be an - noyed,

Arr. by Joseph M. Weiss

Copyright 1928 by De Sylva, Brown and Henderson Inc., 745 Seventh Ave., New York

Copyrighted in South America by Harry Kosarin, Rio de Janero

International Copyright Secured

Made in U. S. A.

All Rights Reserved

Un - der no con - di - tions *L.H.* Hold your wor - ries

in; *L.H.* You'll get in - hib - i - tions That are tough as

sin? So free your - self Just be

your-self All se - crets a - void And

Chorus

Don't hold ev - 'ry-thing Don't hold a - ny-thing

The first system of the chorus features a vocal line in G major with lyrics "Don't hold ev - 'ry-thing Don't hold a - ny-thing". The piano accompaniment starts with a *pf* (piano fortissimo) dynamic and includes a *sfz* (sforzando) accent on the final chord.

Just let ev - 'ry-thing go. Don't be blue -

The second system continues the chorus with lyrics "Just let ev - 'ry-thing go. Don't be blue -". The piano accompaniment features a *sfz* dynamic and includes a triplet of eighth notes in the right hand.

- at all . That won't do - at all Just let ev - 'ry-thing

The third system continues with lyrics "- at all . That won't do - at all Just let ev - 'ry-thing". The piano accompaniment includes a *sfz* dynamic and a triplet of eighth notes in the right hand.

go! Trou-ble's a sin. How can you

The fourth system concludes the chorus with lyrics "go! Trou-ble's a sin. How can you". The piano accompaniment features a *sfz* dynamic and includes a triplet of eighth notes in the right hand.

win ————— Hold-ing it in? ————— Let

go! That's the tick - et. Don't hold ev - 'ry-thing

Don't hold an - y-thing Just let ev' - ry - thing

1 go! 2 go!



HENRY A. YOHANAN

# OUTSTANDING SONG HITS

From

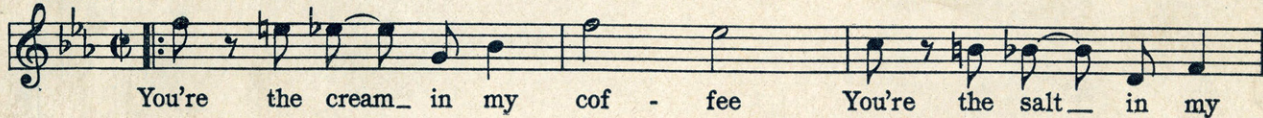
THE NEW MUSICAL SENSATION

# HOLD EVERYTHING!

By B.G. DE SYLVA, LEW BROWN AND RAY HENDERSON

## YOU'RE THE CREAM IN MY COFFEE

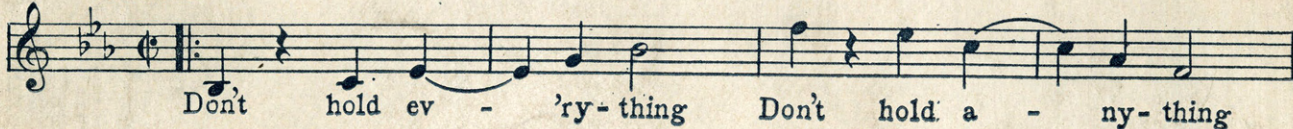
CHORUS



## Don't Hold Everything

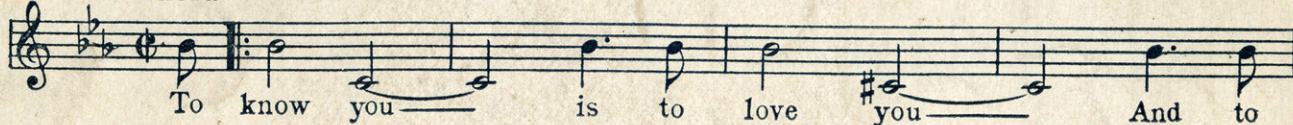
(Let Everything Go)

Chorus



## To Know You Is To Love You

Chorus



Copyright 1928 by De Sylva, Brown and Henderson Inc. 745 Seventh Ave., N.Y.C.

**COPIES ON SALE WHEREVER MUSIC IS SOLD**  
THESE NUMBERS CAN ALSO BE HAD FOR YOUR PHONOGRAPH AND PLAYER PIANO

**DE SYLVA, BROWN AND HENDERSON, INC.**  
*Music Publishers*  
DE SYLVA, BROWN AND HENDERSON BUILDING 745 SEVENTH AVENUE NEW YORK