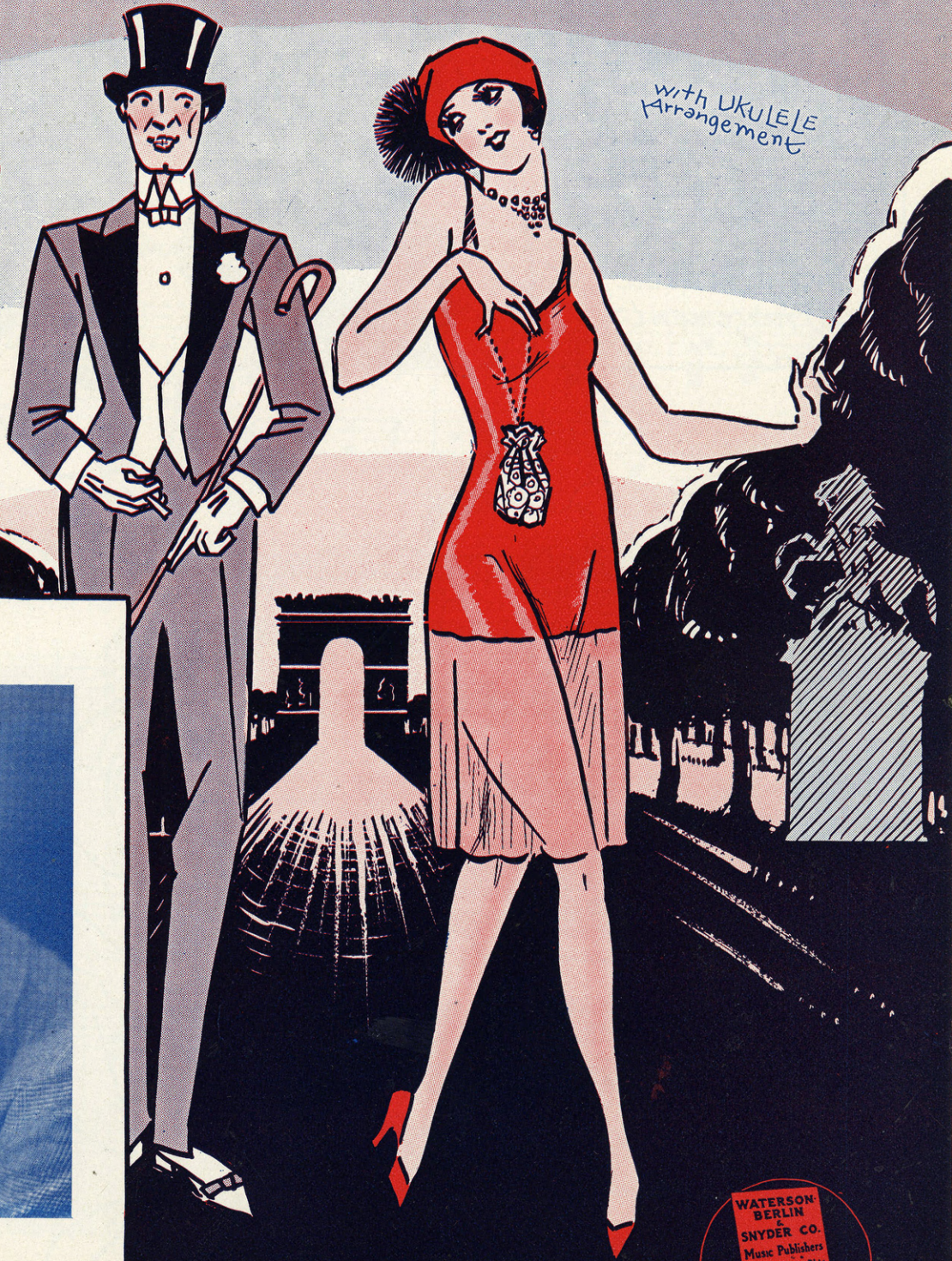


CHERIE HILLY-POM-POM-PEE

words by
Alfred Bryan
MUSIC BY
Pete Wendling

with UKULELE
Arrangement



NICK
LUCAS

WATERSON
BERLIN
&
SNYDER CO.
Music Publishers
Strand Theatre, 816 5c
Broadway at 47th St.
NEW YORK

MADE
IN
USA

Barbelle

THERE'S SOMETHING ABOUT A ROSE

(That Reminds Me Of You)

WORDS BY
IRVING KAHAL and
FRANCIS WHEELER
MUSIC BY
SAMMY FAIN

With Ukulele
Arrangement



Words by
IRVING KAHAL and
FRANCIS WHEELER

Tune-a-Uke
B \flat E \flat G C
Arr. by Harry Tiedeman

Music by
SAMMY FAIN

Chorus

There's some - thing 'bout a rose That re -

minds me, dear, of you, Each pret - ty

pet - al glows Like the light in your eyes of

Copyright 1928 by Waterson, Berlin & Snyder Co.
International Copyright Secured

Made in U. S. A.

This Song For Sale At All Music Dealers or Sent
Direct by the Publishers On Receipt Of
35¢ Also Obtainable On All Phonograph
Records And Piano Rolls.



SM 7628

Chilly Pom Pom Pee

Words by
ALFRED BRYAN

Tune-a-Uke
G C E A
Arr. by Harry Tiedeman

Music by
MARCEL DAISSAIN
Adapted by
PETE WENDLING

Moderato

VOICE

VOIC I

strolled a-long the gay boul - e-varde one night in gay Pa - ree, I met a sweet ba -

bee, Who winked her eye at me, She kept on say-ing 'pom-chil-ly-pom,' and

I was much in doubt, I could-nt quite make out, Just what it was all a - bout.

Copyright 1928 by Waterson, Berlin & Snyder Co.
Copyright, Canada 1928 by Waterson, Berlin & Snyder Co.
International Copyright Secured

4 CHORUS

"Che - rie _____ chil - ly - pom - pom - pom, chil - ly - pom - pom - pee,"

mf

That was all she said when she winked at me, "chil - ly - pom - pom - pee"

Che - rie _____ chil - ly - pom - pom - pom, chil - ly - pom - pom -

pee, _____ I was up a tree, when she said to me, "chil - ly - pom - pom -

pee? _____ Ha - ha! _____ ha - ha!

open strings

Don't you go too far, with your oo - la - la! Ha -
 Don't you pooh-pooh me, with your "tray - jo - lee!" Ha -

ha! ha! ha - ha!
 ha! ha - ha!

There's a "maim-ey voo" who can "par - lay -
 Down the "al - lay voo" with your "zis" for

voo, just as nice as you. Che - rie
 you, and your old man too.

chil - ly - pom - pom - pom, chil - ly - pom - pom - pee, Tell me what she

meant, when she said to me, "chil - ly - pom - pom - pee!" "Che - - pee!"

LET A SMILE BE YOUR UMBRELLA

(On A Rainy Day)

Words by
**IRVING KAHAL and
 FRANCIS WHEELER**
 Music by
SAMMY FAIN



Words by
**IRVING KAHAL and
 FRANCIS WHEELER**

Tune-a-Uke
 G C E A
 Arr. by Harry Tiedeman

Music by
SAMMY FAIN

Chorus

Just let a smile be your um-brel-la on a
 rain-y, rain-y day, And if your sweet-
 eries just tell her that a smile will al-ways

p-f

Copyright 1927 by Waterson, Berlin & Snyder Co.
 International Copyright Secured

Made in U. S. A.

*This Song For Sale At All Music Dealers or Sent
 Direct by the Puplishers On Receipt Of
 35¢ Also Obtainable On All Phonograph
 Records And Piano Rolls.*



MADE
 U.S.A.