

AVALON TOWN

Lyric by 
GRANT CLARKE

Music by 
NACIO HERB BROWN
Writer of "Doll Dance"

WITH UKULELE ARRANGEMENT



C. J. SPONSELLER
6758 ORCHARD BLVD.
PARMA HEIGHTS 9, OHIO



Sherman,  & Co.
SAN FRANCISCO

P. O. M.
GRIFFITH

AVALON TOWN

Lyric by ²⁸ GRANT CLARKE

Music by NACIO HERB BROWN
Writer of "Doll Dance"

WITH UKULELE ARRANGEMENT



Featured by
ROY INGRAHAM
and his Paramount Hotel Orchestra

HANCOCK MUSIC CO.

Sherman,  Clay & Co.
SAN FRANCISCO



P. M. GRIFFITH

AVALON TOWN

Lyric by 
GRANT CLARKE

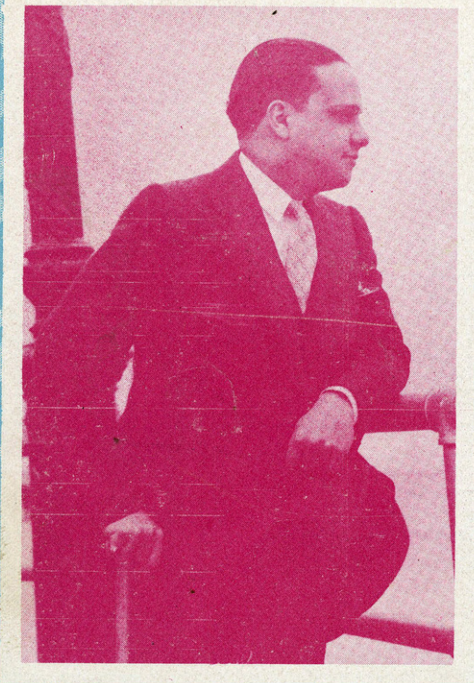
Music by 
NACIO HERB BROWN
Writer of "Doll Dance"

WITH UKULELE ARRANGEMENT

E. B. McGANNON
CHICKERING PIANOS
MUSICAL MERCHANDISE
HUTCHINSON, MINN.



Lorena



Successfully Introduced by
VINCENT LOPEZ
Brunswick Recording Orchestra

Sherman,  & Co.
SAN FRANCISCO

P. O. M.
GRIFFITH



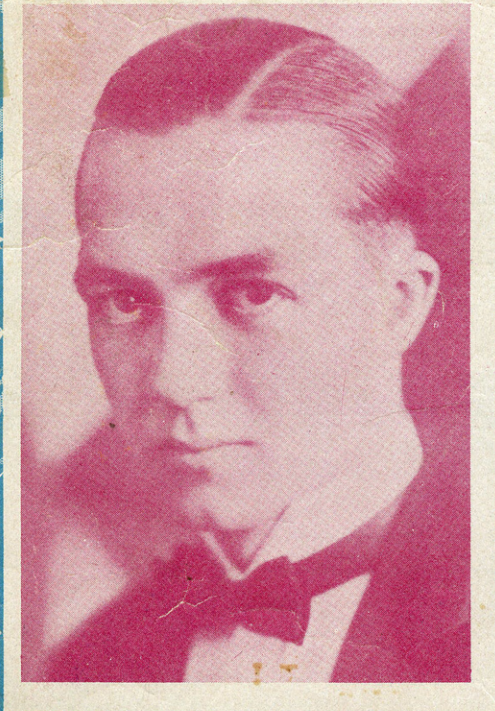
AVALON TOWN

Lyric by 
GRANT CLARKE

Music by 
NACIO HERB BROWN
Writer of "Doll Dance"

WITH UKULELE ARRANGEMENT

Louise Brown

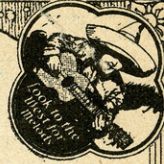


Featured by REG CODE

Sherman,  & Co.
SAN FRANCISCO



P. B. M.
GRIFFITH



BESIDE A LAZY STREAM

(ALL THE WORLD WAS MINE)

Tune Uke
G C E A

Words and Music by
BUD COOPER, NICK LUCAS
and SAM H. STEPT

Chorus

F C7 F dim. Bb F Bbm+6 F dim. Bbm+6 F

When I told you of my love — Un-der star-lit skies a - bove, Be-side a

G7 C7 F C7 F dim. Bb

la - zy stream, — All the world was mine — — — — — When I gent - ly pressed your

F F7 Am Am Alt. Am Am Fm+6 Ab7 C dim. G7

hand — You just seem'd to un-der-stand, Be-side a la - zy stream — All the world was

Copyright MCMXXVIII by Sherman, Clay & Co., San Francisco
International Copyright Secured and Reserved
Keith, Prowse & Co. Ltd., London, W.1. — Allan's Proprietary, Ltd., Melbourne, Australia

PUBLISHED BY

Sherman, Clay & Co.

SAN FRANCISCO

LONELINESS

Tune Uke
Bb Eb G C

Tempo di Valse

By LEW POLLACK
and SIDNEY CLARE

Refrain (with expression) dreamily

Why am I, oh so blue, Why do I long for you?

p *f*

It's on - ly lone - li - ness, on - ly lone - li - ness.

I should be full of cheer, but with - out you here

Copyright MCMXXVIII by Sherman, Clay & Co., San Francisco
International Copyright Secured and Reserved
Keith, Prowse & Co. Ltd., London, W.1.—Allan's Proprietary, Ltd., Melbourne, Australia

PUBLISHED BY

Sherman,  & Co.

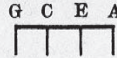
SAN FRANCISCO

SM 7601

AVALON TOWN

Lyrics by
GRANT CLARKE

Tune Uke as follows:



Music by
NACIO HERB BROWN

Moderato

Piano accompaniment for the first system, marked *f*. It features a melody in the right hand and a bass line in the left hand, both in G major.

Think of a Ci - ty, Close by a pret - ty bay,
 A - mong the foun - tains, A - top the moun - tains there,

Piano accompaniment for the second system, marked *mp*. It continues the melody and bass line from the first system.

Set in an Is - land, That seems to smile and say.
 Is na - ture's pow - er, In ev - 'ry flow - er rare.

Piano accompaniment for the third system, continuing the musical accompaniment.

Bring all your trou - bles here, They will be bub - bles here - af - ter
 Brook - lets are whis - per - ing, And as you're lis - ten - ing to them

Piano accompaniment for the fourth system, concluding the piece.

G D7 G D7 G G dim. Bb7

So ex-qui-site yet I can't pic-ture it to _____ you.
 Cer-tain peace-ful-ness Speaks of rest-ful-ness to _____ you.

Chorus

Eb BbAug. Eb C7 Fm

Think of an eve-ning in June, Un-der a crys-tal like moon,

Bb7 Eb

Think of an old Span-ish tune, You're in Av-a-lon Town.

BbAug. Eb C7 Fm

Clos-ing your eyes for a while Pic-ture a tro-pi-cal Isle,

Bb7 Eb G

Stud-ded with flow - ers that smile, You're in Av - a-lon Town. Ro - mance

Detailed description: This system contains the first line of the song. The vocal line starts with a treble clef and a key signature of two flats. The lyrics are 'Stud-ded with flow - ers that smile, You're in Av - a-lon Town. Ro - mance'. Above the vocal line are three guitar chord diagrams: Bb7, Eb, and G. The piano accompaniment consists of a grand staff with treble and bass clefs, featuring a melodic line in the right hand and a bass line in the left hand. A dynamic marking 'f' is present in the piano part.

D7 G D7 G

lin-gers thru ev-'ry hour ——— Ro - mance bec-kons with all her pow - er to

Detailed description: This system contains the second line of the song. The vocal line continues with the lyrics 'lin-gers thru ev-'ry hour ——— Ro - mance bec-kons with all her pow - er to'. Above the vocal line are four guitar chord diagrams: D7, G, D7, and G. The piano accompaniment continues with the same melodic and bass lines as the first system.

Bb7 Eb C7 Fm

you; Think a-bout old Cap-tain Kid, Think of the chest that he hid,

Detailed description: This system contains the third line of the song. The vocal line has the lyrics 'you; Think a-bout old Cap-tain Kid, Think of the chest that he hid,'. Above the vocal line are four guitar chord diagrams: Bb7, Eb, C7, and Fm. The piano accompaniment continues with the same melodic and bass lines.

Bb7 Eb Eb

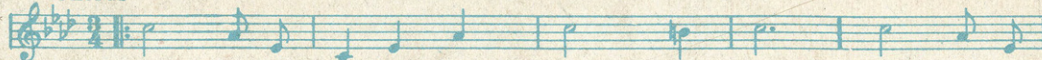
Dream that you've op - ened the lid, You're in Av - a-lon Town. ——— Town. ———

Detailed description: This system contains the final line of the song. The vocal line has the lyrics 'Dream that you've op - ened the lid, You're in Av - a-lon Town. ——— Town. ———'. Above the vocal line are three guitar chord diagrams: Bb7, Eb, and Eb. The piano accompaniment concludes with a double bar line and repeat signs. There are two endings marked '1' and '2' above the final notes of the piano part.



PALS OF LONG AGO

Chorus



Where are you now, Pals of long a - go, Friends that were

Copyright MCMXXVII by Sherman, Clay & Co., San Francisco

IF I SHOULD LOSE YOU

Ballad Fox Trot Hit with an appeal.

Chorus



If I should lose you — If ev-er I lose you, — Where could I wan - der, — what could I do? —

Copyright MCMXXVII by Sherman, Clay & Co., San Francisco

DOLL DANCE

A favorite everywhere.



What a pe - cul - iar tune, Thrill-ing me night and noon, What a pe - cul - iar tune. — Has such a

Copyright MCMXXVII by Sherman, Clay & Co., San Francisco

RAG DOLL

Fox Trot Hit



There is a mem - o - ry, ev-er re - call-ing to me, My lit-tle rag-ged-y doll; —

Copyright MCMXXVIII by Sherman, Clay & Co., San Francisco

LITTLE MOTHER

Melodious Waltz Hit.



Lit-tle Moth-er Moth-er - mine! There's no oth - er Moth - er mine Al-though I

Copyright 1928 by Sherman, Clay & Co., San Francisco

I'M WRITING YOU THIS LITTLE MELODY

Melodious Fox Trot Hit.

Chorus



I'm writ-ing you this lit - tle mel - o - dy — To make our dreams come true —

Copyright MCMXXVIII by Sherman, Clay & Co., San Francisco

TU SAIS (YOU KNOW)

Fox Trot Hit

REFRAIN



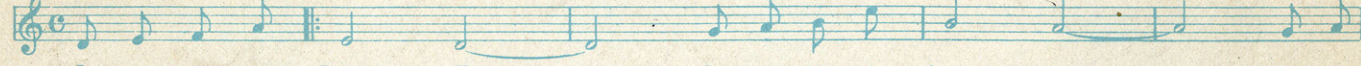
You know my mur-mured words so ten - - der, Mean love that's ev - er true;

Copyright transferred MCMXXVIII to Sherman, Clay & Co., San Francisco

DREAM HOUSE

Melodious Fox Trot Hit.

Refrain



I have built a Dream House — Co - zy lit - tle dream house — Hap - pi -

Copyright MCMXXVI by Sherman, Clay & Co., San Francisco

HIDING IN THE CORNER OF YOUR SMILE

Fox Trot Hit

Chorus



I can see it in your eye (There's some - thing) Ev-'ry time you pass me by (There's some - thing) Hid-ing in the

Copyright MCMXXVIII by Sherman, Clay & Co., San Francisco

BESIDE A LAZY STREAM

Ballad Fox Trot Hit with an appeal.

Chorus



When I told you of my love — Un-der star-lit skies a - bove, Be-side a la - zy stream, — All the world was mine

Copyright 1928 by Sherman, Clay & Co., San Francisco

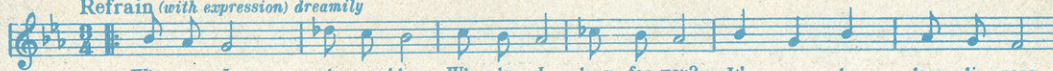
Copies for sale wherever music is sold.

PUBLISHED BY
Sherman, Clay & Co.
SAN FRANCISCO

These numbers can also be had for your phonograph and player piano.

LONELINESS

Refrain (with expression) dreamily



Why am I, oh so blue, Why do I long for you? It's on - ly lone - li - ness,

Copyright MCMXXVIII by Sherman, Clay & Co., San Francisco

AVALON TOWN

Ballad Fox Trot Hit with an appeal.

Chorus



Think of an eve-ning in June, Un-der a crys-tal like moon, Think of an old Span-ish tune, You're in Av - a-lon Town.

Copyright MCMXXVIII by Sherman, Clay & Co., San Francisco

DOLL DANCE

A favorite everywhere.



What a pe - cul - iar tune, Thrill-ing me night and noon, What a pe - cul - iar tune. Has such a

Copyright MCMXXVII by Sherman, Clay & Co., San Francisco

RAG DOLL

Fox Trot Hit



There is a mem - o - ry, ev - er re - call-ing to me, My lit-tle rag-ged-y doll;

Copyright MCMXXVIII by Sherman, Clay & Co., San Francisco

LITTLE MOTHER

Melodious Waltz Hit.



Lit-tle Moth-er Moth-er - mine! There's no oth - er Moth - er mine Al-though I

Copyright 1928 by Sherman, Clay & Co., San Francisco

I'M WRITING YOU THIS LITTLE MELODY

Melodious Fox Trot Hit.

Chorus



I'm writ-ing you this lit-tle mel - o - dy To make our dreams come true

Copyright MCMXXVIII by Sherman, Clay & Co., San Francisco

TU SAIS (YOU KNOW)

Tango Fox Trot Hit

REFRAIN



You know my mur-mured words so ten - - der, Mean love that's ev - er true;

Copyright transferred MCMXXVIII to Sherman, Clay & Co., San Francisco

DREAM HOUSE

Melodious Fox Trot Hit.

Refrain



I have built a Dream House Co - zy lit - tle dream house Hap - pi -

Copyright MCMXXVI by Sherman, Clay & Co., San Francisco

BESIDE A LAZY STREAM

Ballad Fox Trot Hit with an appeal.

Chorus



When I told you of my love Un-der star-lit skies a - bove, Be-side a la-zy stream, All the world was mine

Copyright 1928 by Sherman, Clay & Co., San Francisco

KIDDIE KAPERS

Piano Novelette

Moderato



Copyright MCMXXVIII by Sherman, Clay & Co., San Francisco

Copies for sale wherever music is sold.

Sherman, Clay & Co.

These numbers can also be had for your phonograph and player piano.

SAN FRANCISCO

SCHOLZ, ERICKSON & COMPANY, SAN FRANCISCO