

# SHAKING THE BLUES AWAY

11/22/75

TR 11/22/75

*Patricia Rae*  
M-G-M presents

## IRVING BERLIN'S EASTER PARADE



starring  
JUDY FRED  
GARLAND \* ASTAIRE  
PETER LAWFORD  
ANN MILLER

COLOR BY TECHNICOLOR

Screen Play by  
SIDNEY SHELDON, FRANCES GOODRICH and ALBERT HACKETT  
Original Story by  
FRANCES GOODRICH and ALBERT HACKETT

Musical Numbers Directed by ROBERT ALTON  
Directed by CHARLES WALTERS  
Produced by ARTHUR FREED

A METRO-GOLDWYN-MAYER PICTURE

Lyrics and Music by  
IRVING BERLIN

PRICE 50¢



IRVING BERLIN  
*Music Corporation*  
1650 BROADWAY, NEW YORK 19, N. Y.

2 SM 7494

Featured in Irving Berlin's "EASTER PARADE" an M. G. M. production

# Shaking The Blues Away

B $\flat$

Verse - cho  
Bridge - cho

Tune Ukulele  
or Banjulele Banjo  
A D F# B  
put capo on 1st fret

By IRVING BERLIN

Piano introduction musical notation in B-flat major, 2/4 time. The right hand features a rhythmic melody with eighth and sixteenth notes, while the left hand provides a steady accompaniment of chords and single notes.

Continuation of the piano introduction, ending with a double bar line. The notation includes dynamic markings such as *p* (piano).

(Ho ho)

VOICE

There's an old su-per-sti-tion 'way down south Ev-'ry dark - ie be -

Vocal line with lyrics and guitar chord diagrams above the staff. Accompanying piano notation is shown below.

lieves that troub - le won't stay \_\_\_\_\_ if you shake it a - way \_\_\_\_\_

Vocal line with lyrics and guitar chord diagrams above the staff. Accompanying piano notation is shown below.

Ukulele arrangement by MAY SINGHI BREEN.

Copyright 1927 Irving Berlin



When they hold a re - vi - val way down south

Ev - 'ry dark - ie with care and trou - ble, that day

tries to shake it a - way.

*A TEMPO*

**CHORUS** *Bb Eb Blues*

Shak - ing the blues a - way — Unhap - py news a - way —

*p-f*

*Fmi* *Bb7* *Fmi* *Bb7* *Eb* *Db* *B7* *Bb7*

If you are blue it's eas - y to shake off your cares and troub - les

*Eb* *Bb7*

tel-ling the blues to go — They may re-fuse to go —

*Fmi* *B7* *Fmi* *B7* *Eb* *Bb7* *Bb7* *Bb7* *Bb7* *Bb7* *Bb7*

but as a rule they'll go — If you'll shake them a - way — Do like the

*B7* *Fmi*

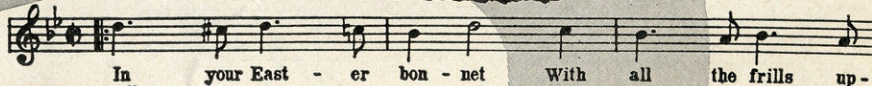
dark - ies do — List' - ning to — a preach - er way down south



# Standard Songs from Irving Berlin's "EASTER PARADE"

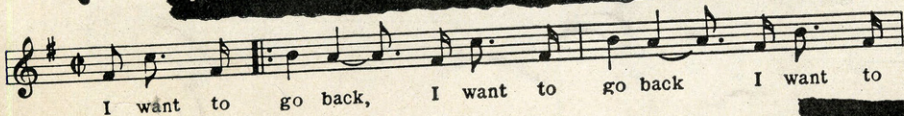
M.G.M.'s Technicolor Production

## EASTER PARADE



Copyright 1938 IRVING BERLIN

## I WANT TO GO BACK TO MICHIGAN



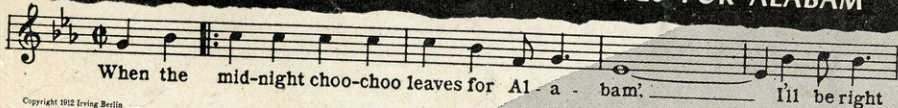
Copyright 1934 Irving Berlin

## GIRL ON THE MAGAZINE COVER



Copyright 1935 IRVING BERLIN

## WHEN THE MIDNIGHT CHOO-CHOO LEAVES FOR ALABAMA



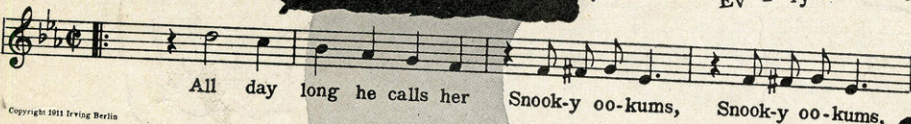
Copyright 1932 Irving Berlin

## EVERYBODY'S DOIN' IT NOW



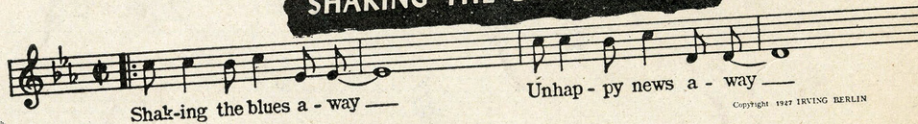
Copyright 1931 Irving Berlin

## SNOOKY OOKUMS



Copyright 1931 Irving Berlin

## SHAKING THE BLUES AWAY



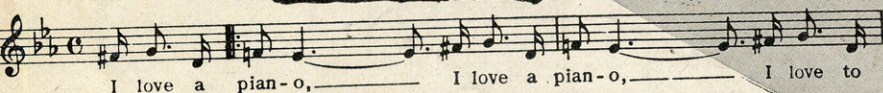
Copyright 1927 IRVING BERLIN

## RAGTIME VIOLIN



Copyright 1931 Irving Berlin

## I LOVE A PIANO



Copyright 1915 IRVING BERLIN

## BEAUTIFUL FACES



Copyright 1928 Irving Berlin

IRVING BERLIN  
Music Corporation  
1650 BROADWAY, NEW YORK 19, N. Y.