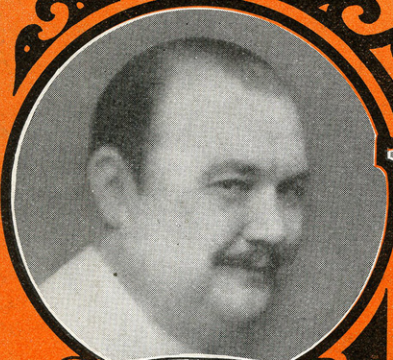


THE SAME OLD MOON

CHARLES  
DILLINGHAM'S  
PRODUCTION

# LUCKY



PAUL WHITEMAN



WALTER CATLETT



MARY EATON



JOSEPH SANTLEY



RICHARD (SKEET)  
GALLAGHER



IVY SAWYER



RUBY KEELER

By  
**OTTO HARBACH**  
BERT HARRY  
**KALMAR & RUBY**  
and  
**JEROME KERN**

T. B. HARMS  
COMPANY  
NEW YORK

Dancing The Devil Away  
Cingalese Girls  
That Little Something  
When The Bo-Trec Blossoms Again  
The Same Old Moon

STAGED BY  
**HASSARD SHORT**  
DANCES ARRANGED BY  
**DAVID BENNETT**  
RASCH DANCES  
ARRANGED BY  
**ALBERTINA RASCH**

# WHO?

Words by  
OTTO HARBACH and  
OSCAR HAMMERSTEIN II

Music by  
JEROME KERN

Burthen

Who stole my heart—

*con grazia*

*Psemplice*

Detailed description: This system contains the first two staves of music. The top staff is a vocal line in treble clef, starting with a dynamic marking of *p*. The lyrics 'Who stole my heart—' are written below the notes. The bottom two staves are piano accompaniment in G major and 2/4 time. The right hand features a melody with a *con grazia* marking, and the left hand plays a simple accompaniment with a *Psemplice* marking.

a - way? Who makes me dream—

Detailed description: This system contains the third and fourth staves of music. The vocal line continues with the lyrics 'a - way? Who makes me dream—'. The piano accompaniment continues with the same melodic and harmonic patterns as the first system.

— all day? Dreams, I know, can

Detailed description: This system contains the fifth and sixth staves of music. The vocal line concludes with the lyrics '— all day? Dreams, I know, can'. The piano accompaniment continues with the same melodic and harmonic patterns as the first system.

Copyright MCMXXV by T.B. Harms Co., N.Y.  
International Copyright Secured  
ALL RIGHTS RESERVED Including public performance for profit

SM7491

"Lucky"

# The Same Old Moon

The right to make arrangements of or otherwise reproduce this composition is expressly reserved

Duet  
Tune Ukulele  
A D F# B

By OTTO HARBACH  
BERT KALMAR  
and HARRY RUBY

Molto moderato

Piano

*p* *rall.*

*pp*

She: An - y time you want a girl to love you, Ask her while the moon is

*pp* *a tempo.*

up a - bove you; It's up the sur - est

plan, He: That has been the form of

re - cre - a - tion, Prac-ticed by the young-er gen - er - a - tion

Since the world be - gan.

**Refrain** *Obbligato*  
An - y time you want a girl to love you, Ask her while the moon is  
'Neath the same old moon

up a - bove you, And you'll win her  
That shines a -

love. While the orb of night is  
bove. Lov - ers al -

bright - ly shin - ing, Tell her that your love sick heart is pin - ing  
ways croon Their

Neath the moon a - bove.  
tune of love.

All through his - t'ry's pages,  
Trace it back to

Simp - le - tons and sag - es have been do - ing  
where you will, And ev - 'ry Jack

their woo - ing through the ag - es  
has won his Jill Be

'Neath the same old moon that shines a - bove; So al - ways take the one you  
'Neath the same old moon.

want to love you, Neath the moon a -  
That shines a -

bove. bove.  
bove. bove.

*dim. e rall.* *ppp*

"Criss-Cross"

# You Will - Won't You?

The right to make arrangements of or otherwise reproduce this composition is expressly reserved

Words by  
ANNE CALDWELL  
and OTTO HARBACH

Music by  
JEROME KERN

Burthen

*p-f*

You will now, won't you? You will, won't you?

You want to, don't you? You do, don't you?

ven - tu - al - ly, con - tent you will be If

*cresc.* *poco* *a poco* *mf*

Copyright MCMXXVI by T.B.Harms Co., N.Y.

International Copyright Secured

ALL RIGHTS RESERVED Including public performance for profit