

ME AND MY SHADOW

AX
30

By AL JOLSON
BILLY ROSE
and DAVE DREYER



WITH UKULELE ARRANGEMENT



MADE IN USA

Irving Berlin, Inc.
MUSIC PUBLISHERS
1607 Broadway New York

CODE WORD
"SHADOW"

ME AND MY SHADOW

DOC CLAYTON

By AL JOLSON
BILLY ROSE
and DAVE DREYER

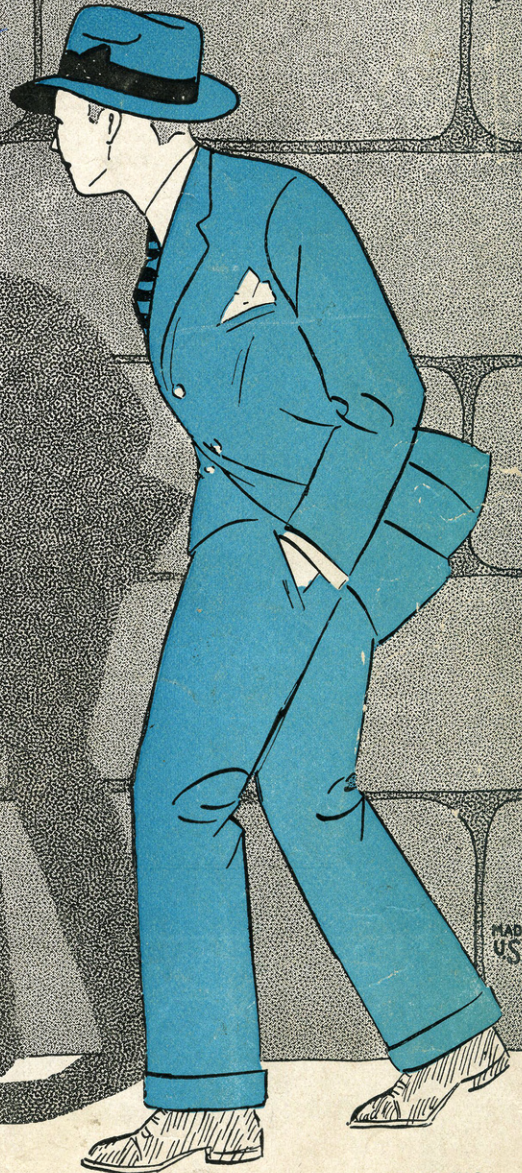
*"Doc"
Clayton*



FEATURED
BY
HENRI GARDEN

E. B. McGENNON
CHICKERING PIANOS
MUSICAL MERCHANDISE
BULLOCK & COMPANY, INC.

WITH
UKULELE ARRANGEMENTS



MADE IN
USA

Irving Berlin, Inc.
MUSIC PUBLISHERS
1607 Broadway New York

CODE WORD
"SHADOW"



HIS LATEST

IRVING BERLIN'S RUSSIAN LULLABY

CHORUS

Ev 'ry night you'll hear her croon A

Russ - ian lull - a - by Just a

lit - tle plain - tive tune When ba by starts to

Copyright 1927 by IRVING BERLIN, Inc., 1607 B'way, N.Y.
International Copyright Secured All Rights Reserved

COPIES ON SALE WHEREVER MUSIC IS SOLD
This Number can also be had for your Phonograph and Player Piano

SM 7422

Me And My Shadow

Words by
BILLY ROSE

Tune Ukulele
or Banjulele Banjo
A D F# B
Put Capo on 1st Fret

Music by
AL JOLSON and
DAVE DREYER

Moderato

First system of piano introduction in G minor, 4/4 time. It begins with a forte (f) dynamic and features a melody in the right hand and a bass line in the left hand.

Second system of piano introduction, ending with a 'Vamp' section marked with a piano (p) dynamic. The vamp consists of a repeating rhythmic pattern of chords.

VOICE

Four guitar chord diagrams for the voice line, corresponding to the chords Gm, Fm, E7, and Dm.

Shades of night are fall-ing and I'm lone-ly — Stand-ing on the
 When the sun sets on the far ho - ri - zon — And the par-lor

Piano accompaniment for the first vocal line, starting with a piano (p) dynamic. It provides harmonic support for the vocal melody.

Five guitar chord diagrams for the voice line, corresponding to the chords Gm, Fm, E7, Dm, and Gm.

cor-ner feel-ing blue — Sweet-hearts out for fun
 lamps be - gin to glow — Jim and Jack and John

Piano accompaniment for the second vocal line, continuing the harmonic support for the vocal melody.

Ukulele arr. by MAY SINGHI BREEN

Pass me one by one
Put their slip-pers on

Guess I'll wind up like I al-ways do, with on - ly
They're all set but we're still on the go, so lone-ly

CHORUS

Me and my sha - dow

p-f

stroll-ing down the av - en - ue Me

and my sha - dow not a soul to tell our trou-bles

to ——— And when it's twelve o'clock ——— we climb the stair —

we nev-er knock ——— for no-bod-y's there ——— Just

me and my sha - dow All a-lone and

feel - ing blue blue



Al Jolson's Great Success

Swanee River Trail

CHORUS

By AL JOLSON &
IRVING CAESAR

Girl I left be - hind me on the Swan - ee Riv - er

p-f

Trail, Some - day you will find me on the Swan - ee Riv - er

Trail, South-land please keep her for me,

Copyright 1927 by IRVING BERLIN Inc., 1607 Broadway, N. Y.
International Copyright Secured MADE IN U. S. A. (All Rights Reserved)

COPIES ON SALE WHEREVER MUSIC IS SOLD
This Number can also be had for your Phonograph and Player Piano