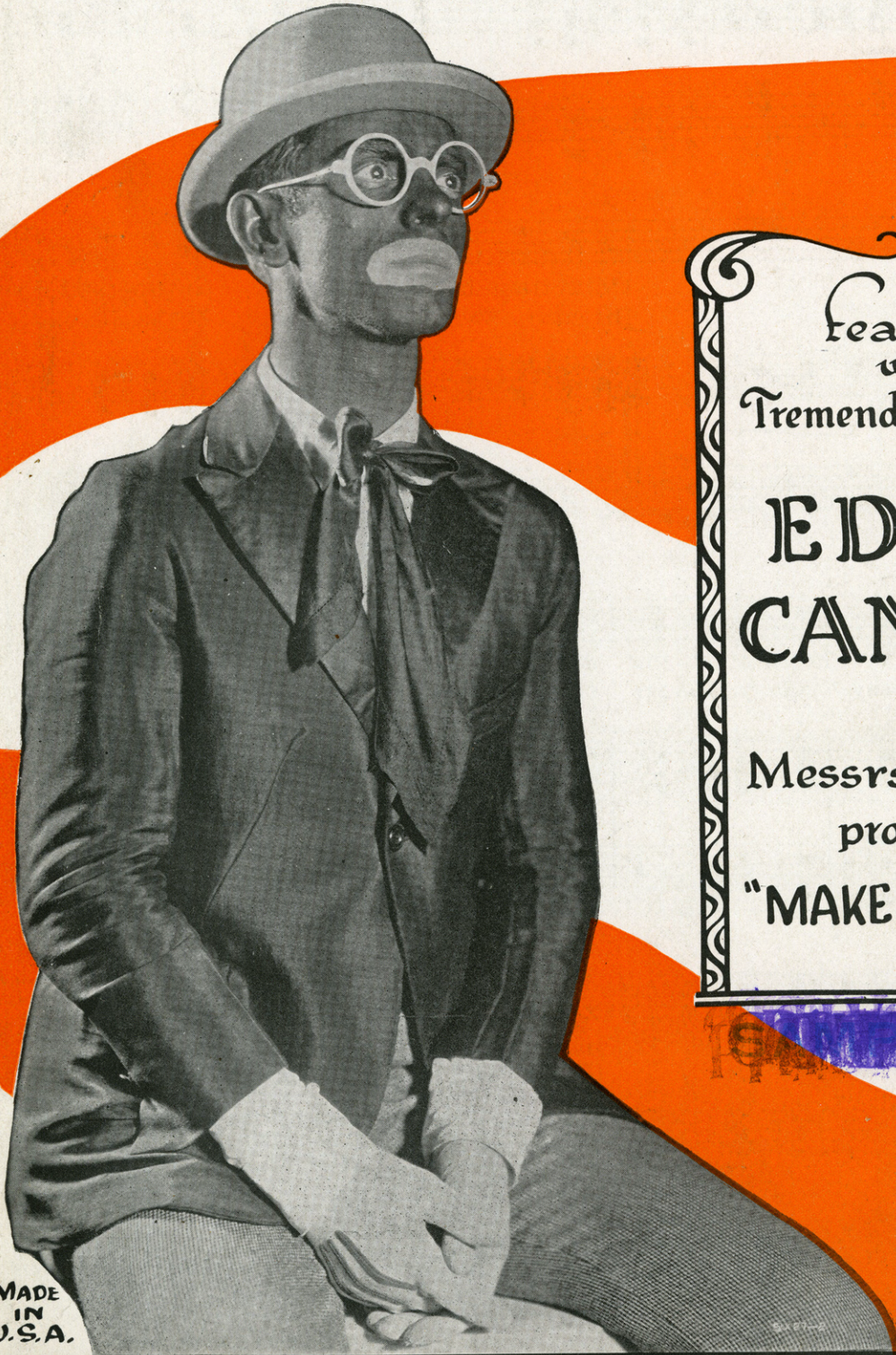


KEEP IT UNDER YOUR HAT



Featured
with
Tremendous Success
by
**EDDIE
CANTOR**
in
Messrs. Shubert
production
"MAKE IT SNAPPY"

MADE
IN
U.S.A.

THE BEE TEE
PUBLISHING CO.
145 West 45th St.
NEW YORK CITY

Admission

SM 5604

Keep It Under Your Hat

By
EDDIE CANTOR
CHAS. TOBIAS
LOUIS BREAU

Allegretto

The piano introduction consists of two staves. The right hand features a rhythmic melody with eighth and sixteenth notes, while the left hand provides a steady accompaniment with chords and single notes. The tempo is marked 'Allegretto' and the dynamics include a forte 'f' marking.

Till Ready *p*

On a train the oth-er day Sit-ting right a-
His ad-vice was might-y fine I've been think-ing

The first system of the song features a vocal line and piano accompaniment. The vocal line begins with a rest, then enters with the lyrics. The piano accompaniment consists of chords in the right hand and a bass line in the left hand. Dynamics include 'mf' and 'p'.

-cross the way I heard a fel-low say I'm blue - oo-oo-oo
all the time why man-y girls are cry - in' too - oo-oo-oo

The second system continues the vocal and piano accompaniment. The vocal line includes the lyrics and melodic phrasing. The piano accompaniment continues with chords and bass notes. Dynamics include 'mf' and 'p'.

Lost my girl and I'm in dutch I'm to blame I talk too much
Like a mas-on don't re-peat If you tell each friend you meet

The third system concludes the vocal and piano accompaniment. The vocal line finishes with the lyrics. The piano accompaniment provides harmonic support. Dynamics include 'mf' and 'p'.

Learned my les-son, And I'm not guess-in' When I'm con-fess-in' to you—
They'll be reap-in' What you've been keep-in' And leave you weep-in' and blue.

CHORUS *p-f*

If you got a girl and you don't want to lose her
If you got a man and you don't want to lose him

Keep it un-der your hat. May-be some-one else will be
Keep it un-der your hat. May-be Mar-y-Ann will be

darn glad to choose her. Keep it un-der your hat.
darn glad to choose him. Keep it un-der your hat.

Don't tell tales or you'll be pon - der - in' Where your lit - tle
In the park or at a mov - ie show Where it's dark your

peach is wan - der - in' When you're with your gal just tell her she's nif - ty but
friends will nev - er know If he holds you tight just like you've been wish - in' —

Keep it from your pal un - til she's fif - ty When you call a - round and the
Nev - er tell him when it's in - ter - mis - sion If he likes your pie and he

par - lor is co - zy Keep it un - der your hat.
thinks you're the bak - er Keep it un - der your hat.

If you hold her hand and the whole world is ro - sy Keep it un - der your
 Though you had to buy don't let on you're a fak - er Keep it un - der your

hat. If you kiss and think you're in heav - en Say good - bye to
 hat. If he says you get all my kiss - es When you're near me

her at e - lev - en But you real - ly leave when the clock's strik - ing sev - en
 I know what bliss is Though you know he told that to ten oth - er miss - es

Keep it un - der your hat. hat. _____
 Keep it un - der your hat. hat. _____



TRY THIS OVER

You Can Secure a Copy From Your Local Dealer

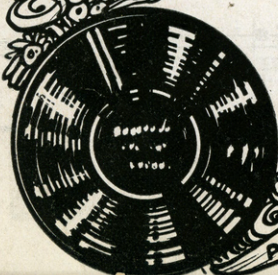
(There's A Bend)
At The End Of The Swanee
(A Haunting Southern Melody)

By CHAS. TOBIAS
& LOUIS BREAUX
Writers of "Hummingbird"
"I Want My Man" and
"All For The Love Of Mike"

Chorus

There's a Bend at the end of the Swa -
- nee, Where I'll wend my wear-y way
- There's a light shin-ing bright from a win - dow each night -
- seems to call me home to stay.

Copyright 1923 by Bee Tee Pub.Co. 145 W 45 St N.Y.C.
All Rights Reserved



ASK FOR THE RECORD
DESIGNED BY

A New Song That Should Be In Every Home.

ASK FOR THE PIANO ROLL
PADEREWSKI