

3/21/74

YES SIR! THAT'S MY BABY

WITH
UKULELE
ARRANGEMENT



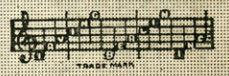
Words by
Gus Kahn
Music by
Walter Donaldson



FEATURED BY
WELDER SISTERS

Leff

Irving Berlin, Inc.
MUSIC PUBLISHERS
1607 Broadway New York



MADE IN
USA

YES SIR! THAT'S MY BABY

WITH
UKULELE
ARRANGEMENT



Words by
Gus Kahn
Music by
Walter Donaldson



A. I. RIEDLING MUSIC CO.
ALBUQUERQUE, N. M.

Irving Berlin, Inc.
MUSIC PUBLISHERS
1607 Broadway New York



MADE IN
U.S.A.

YES SIR! THAT'S MY BABY

WITH
UKULELE
ARRANGEMENT



Words by
Gus Kahn
Music by
Walter Donaldson



Leff

Irving Berlin, Inc.
MUSIC PUBLISHERS
1607 Broadway New York



MADE IN
USA

YES SIR! THAT'S MY BABY

BB

WITH
UKULELE
ARRANGEMENT



Words by
Gus Kahn
Music by
Walter Donaldson



Leff

\$ 1

MADE IN
USA

Irving Berlin, Inc.
MUSIC PUBLISHERS
1607 Broadway New York



YES SIR! THAT'S MY BABY

J. B. Stouder

1920

WITH
UKULELE
ARRANGEMENT

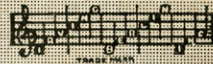


Words by
Gus Kahn
Music by
Walter Donaldson



FEATURED BY
EVELYN HOEY

Irving Berlin, Inc.
MUSIC PUBLISHERS
1607 Broadway New York



MADE IN
USA

YES SIR! THAT'S MY BABY

WITH
UKULELE
ARRANGEMENT

PROPERTY OF
COLUMBIA BROADCASTING SYSTEM,

Words by
Gus Kahn
Music by
Walter Donaldson



Leff

MADE IN
USA

Irving Berlin, Inc.
MUSIC PUBLISHERS
1607 Broadway New York



SM 6767

Yes Sir, That's My Baby

Words by
GUS KAHN

With Piano
Tune Ukulele
A D F# B
Put Uke Capo on 1st Fret

Music by
WALTER DONALDSON

Moderato

Musical notation for the piano introduction, consisting of two staves (treble and bass clef) in a 4/4 time signature with a key signature of two flats (Bb and Eb). The tempo is marked 'Moderato'. The music begins with a forte (*f*) dynamic and features a series of chords and moving lines in both hands.

Continuation of the piano introduction, including a repeat sign and a section marked 'Till ready' with a piano (*p*) dynamic. The notation continues across two staves.

VOICE

Who's that com - ing down the street? Who's that look - ing so pe - tite?
Who's the "who" I rave a - bout? Who do I feel blue with - out,

Musical notation for the first line of the vocal melody and piano accompaniment. The piano part is marked with a piano (*p*) dynamic. Chord diagrams are provided above the vocal staff.

Who's that com - ing down to meet me here?
In the Win - ter, Sum - mer, Spring and Fall?

Musical notation for the second line of the vocal melody and piano accompaniment. Chord diagrams are provided above the vocal staff.

Ukulele arr. by
MAY SINGHI BREEN

Who's that you know who I mean, Sweet-est "who" you've ev - er seen,
 What was I just "gon - na" say, I for - get, but an - y way,

I could tell her miles a - way from here.
 Here's the most im - port - ant thing of all.

CHORUS

Yes, Sir, That's my Ba - by, No, Sir,
 Yes, Sir, That's my Ba - by, No, Sir,

Don't mean "May - be" Yes, Sir, That's my Ba - by now.
 Don't mean "May - be" Yes, Sir, That's my Ba - by now.

Yes, ma'am we've de - cid - ed
Well well, "lookit" that ba - by

No ma'am, we won't hide it, Yes, ma'am
Do tell, don't say "may - be" Nell's bells

you're in - vit - ed now. By the
won't she cause some row. Pret - ty

way, By the way When we
soon Pret - ty soon We will

reach the preach-er I'll say, (with feeling)
hear that Lo - hen-grin tune, (I'm sayin')

Yes, Who Sir, for That's my she Ba - by, No, Sir,
No, for should she be sir, No, one

don't mean "may - be" Yes, Sir, That's my Ba - by
else but me sir, Yes sir, That's my Ba - by

now. now. now. now.



THE NEW NOVELTY SONG HIT

SONYA

(YUP ALAY YUP)

Words by
BOB SCHAFFER
Music by
FRED FISHER

CHORUS

Oh! when I'm thinking of you Son - ya, my own, Oh! when I'm thinking of you,

p

Son - ya I feel ri - dic - u - lous; I'm heart - sick and sore.

Since you want your Nic - o - las, no more. All thru' the day-time my

Copyright MCMXXV by IRVING BERLIN Inc. 1607 B'way N.Y.
International Copyright Secured Made in U.S.A. All Rights Reserved

COPIES ON SALE WHEREVER MUSIC IS SOLD
This Number can also be had for your Phonograph and Player Piano



THE GREATEST COMEDY SONG HIT IN YEARS

THAT CERTAIN PARTY

Words by
GUS KAHN
Music by
WALTER DONALDSON

CHORUS

Has she got naugh-ty eyes? Yes, she has got naugh-ty eyes, That cer-tain,
Has she got you know what? Yes, she has got you know what, That cer-tain,

THAT CER-TAIN PAR - TY ——— You know the one I mean,
THAT CER-TAIN PAR - TY ——— Has she got I for-got,

Sure, you know the one I mean, THAT CER-TAIN PAR-TY OF MINE
Yes she has got I for-got THAT CER-TAIN PAR-TY OF MINE

Copyright MCMXXV by IRVING BERLIN, Inc. 1607 B'way N.Y.
International Copyright Secured Made in U.S.A. All Rights Reserved

COPIES ON SALE WHEREVER MUSIC IS SOLD
This Number can also be had for your Phonograph and Player Piano



THE NEW NOVELTY SONG HIT

UKULELE LADY

Words by
GUS KAHN
Music by
RICHARD A. WHITING

CHORUS

If you like - a Uk - u - le - le La - dy, Uk - u - le - le La - dy like - a
you — If you like to lin - ger where it's sha - dy Uk - u - le - le La - dy lin - ger
too — If you kiss a Uk - u - le - le La - dy While you prom - ise ev - er to be

Copyright MCMXXV by Irving Berlin Inc. 1607 Broadway, N.Y. C.
International Copyright Secured Made in U.S.A. All Rights Reserved

COPIES ON SALE WHEREVER MUSIC IS SOLD
This Number can also be had for your Phonograph and Player Piano



THE GREAT AMERICAN FOX-TROT SONG HIT

YANKEE ROSE

Words by
SIDNEY HOLDEN
CHORUS

Music by
ABE FRANKL

YANK - EE ROSE so true,
YANK - EE ROSE so true,

How we all love you,
Mil - lion beaus love you,

And we're proud to say
To the world you say,

Copyright 1926 by IRVING BERLIN Inc., 1607 Broadway, N. Y. C.
International Copyright Secured Made in U. S. A. All Rights Reserved

COPIES ON SALE WHEREVER MUSIC IS SOLD
This Number can also be had for your Phonograph and Player Piano