

WANDA

Jack M. Welsh  
presents

Lyrics by  
Raymond B. Egan

Music by  
Richard A. Whiting

WILL  
MORRISSEY'S  
CHATTER BOX  
REVUE

RICHARD W. KRAKEUR  
Managing Director

At The  
TIMES SQUARE  
THEATRE  
N.Y.C.

Scenes by-  
HOWARD EMMETT  
RODGERS

Dances and  
Ensembles by  
MAX SCHECK

MY EMPTY ARMS . . . . .	60
WANDA . . . . .	60
TREASURE ISLAND . . . . .	60
SUSAN . . . . .	60
CHATTERBOX GIRL . . . . .	60
KEEP SAKES . . . . .	60
CINDERELLA DREAMS . . . . .	60
ROSE OF TENEMENT ROW . . . . .	60

*Wohlman*

MUSIC  
PUBLISHERS  
474 STREET  
New York

MADE IN U.S.A.

SM 6732

2 "Chatterbox Revue"

# Wanda

Lyric by  
RAYMOND B. EGAN

Music by  
RICHARD A. WHITING

Moderato

*Vamp*

The piano introduction consists of two staves. The right hand starts with a series of chords and a melodic line, while the left hand provides a steady accompaniment. The tempo is marked 'Moderato'. The key signature has two flats (B-flat and E-flat).

Love will grow where flow-ers will fade— In a

The first line of the song features a vocal melody in the right hand and piano accompaniment in the left hand. The lyrics are 'Love will grow where flow-ers will fade— In a'. The piano part includes a 'rall' (rallentando) marking and a 'p' (piano) dynamic marking.

cool or trop-i-cal glade— I have seen ro-

The second line of the song continues the vocal melody and piano accompaniment. The lyrics are 'cool or trop-i-cal glade— I have seen ro-'. The piano part continues with a steady accompaniment.

man-ces in-vade— Old Sas - katch - a - wan—

The third line of the song concludes the vocal melody and piano accompaniment. The lyrics are 'man-ces in-vade— Old Sas - katch - a - wan—'. The piano part includes a key change to one sharp (F#) in the final measure.

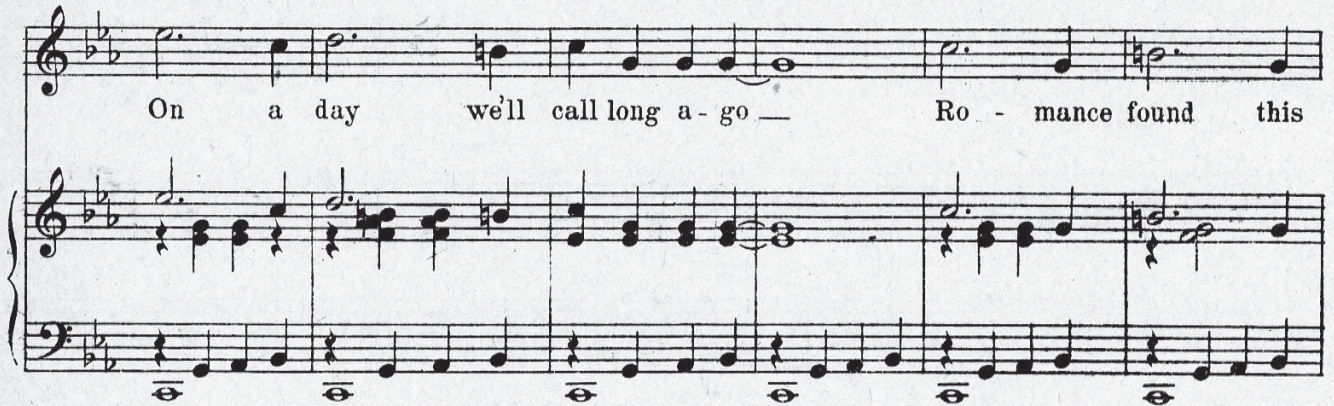
Copyright MCMXXV by Shapiro, Bernstein & Co. Inc Cor. Broadway & 47th Street, New York.  
 Propiedad Asegurada Para La Republica Mexicana MCMXXV Todos Los Derechos Reservados.  
 Derechos De Reproduccion Reservados En Cuba y Sud y Central America.

International Copyright Secured.

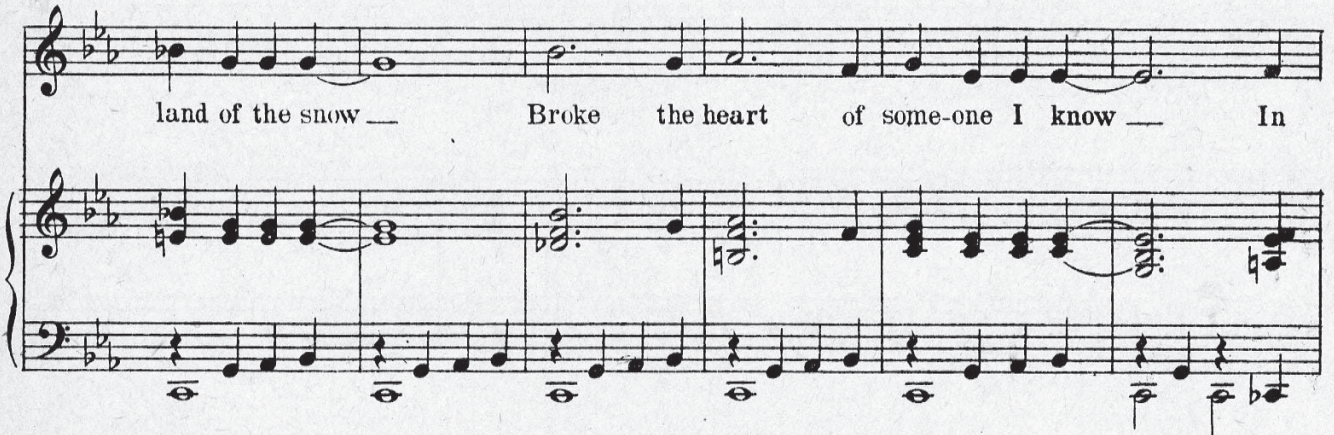
ALL RIGHTS RESERVED.  
 Including Public Performance For Profit.

Made in U. S. A.

On a day we'll call long a - go — Ro - mance found this



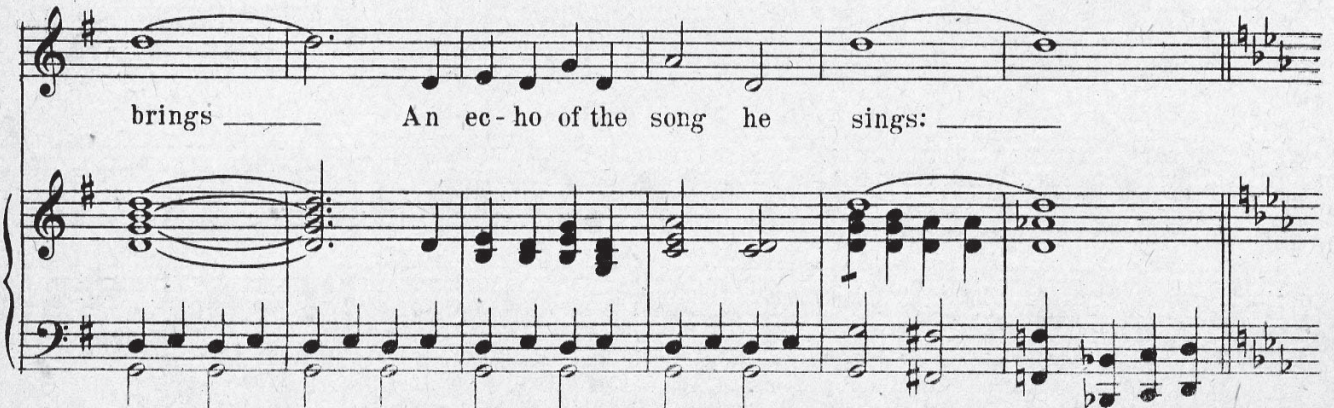
land of the snow — Broke the heart of some-one I know — In



old Sas-katch - a - wan — The wind of win - ter



brings — An ec - ho of the song he sings: —



Chorus

Wan - da of old Sas - katch - a - wan

I'm call - ing you

My heart is brok - en it seems — A

tok - en of dreams — we knew —

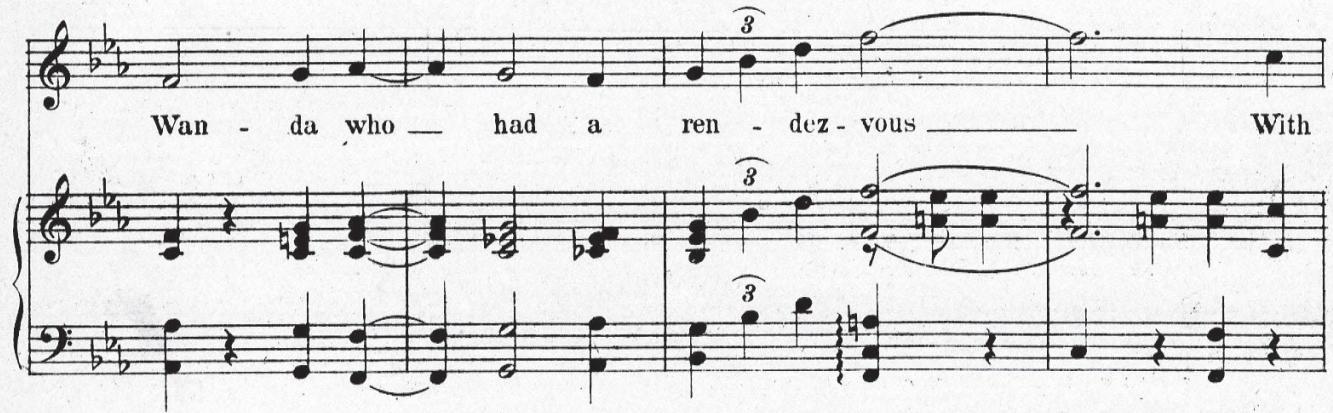
Wan - da, my tent is lone - ly, when



Camp - fi - res start \_\_\_\_\_ I want



Wan - da who had a ren - dez - vous \_\_\_\_\_ With



love and lost her heart. \_\_\_\_\_



# TRY THESE OVER

**YOUR MUSIC DEALER** CARRIES THESE SONG HITS -  
Every copy contains a **UKELELE** part

## AT THE END OF THE ROAD

*A New Ballad by the Writers of "INDIANA"*



At the end of the road, The long dust - y road, There's peace, there's con - tent - ment and rest..

Copyright MCMXXIV by Shapiro, Bernstein & Co. Inc.

## THE ONLY ONLY ONE (-for me)

*The dance craze of the day.*

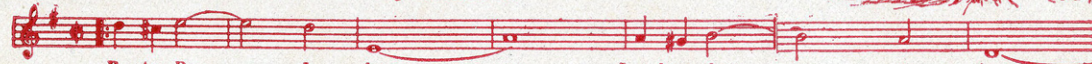


If you would be the on - ly on - ly one for me ——— Then I would be the on - ly on - ly one for

Copyright MCMXXIV by Shapiro, Bernstein & Co. Inc.

## PETER PAN (I Love You)

*Dedicated to Miss Marilyn Miller*

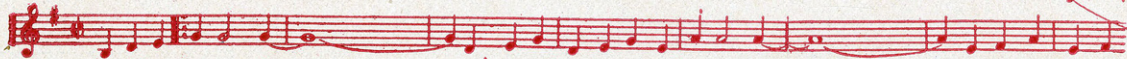


Pe - ter Pan, — I love you Loved you from — — the start ———

Copyright MCMXXIV by Shapiro, Bernstein & Co. Inc.

## ALABAMA BOUND

*AL. JOLSON'S Big Hit.*



I'm Al - a - bam - y bound ——— There'll be no "Heeb - ie Jeeb - ies" hangin' round, ——— Just gave the mean - est

Copyright MCMXXV by Shapiro, Bernstein & Co. Inc.

## AIN'T MY BABY GRAND?

*A Toe-tickling mirth provoker by the writers of "WHY DID I KISS THAT GIRL?"*



Here she comes a - cross the floor AIN'T MY BA - BY GRAND? Just what I've been wait - in' for AIN'T

Copyright MCMXXV by Shapiro, Bernstein & Co. Inc.

## THE MELODY THAT MADE YOU MINE

*VINCENT LOPEZ' Waltz Hit in the "GREENWICH VILLAGE FOLLIES"*

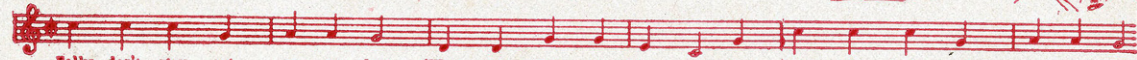


It was a moon - light, Beau - ti - ful June night, We waltzed this sweet mel - o - dy; ——— I held you

Copyright MCMXXV by Shapiro, Bernstein & Co. Inc.

## 'WAY OUT WEST IN KANSAS

*The Radio hit — lots of extra choruses.*



Folks don't stay out ve - ry late 'Way out West in Kan - sas, They take the 'side - walks in at eight

Copyright MCMXXIV by Shapiro, Bernstein & Co. Inc.

## THE VALE OF GOLDEN DREAMS

*A Ballad with a real appeal —*



When the sun is in the West And birds have gone to rest I nev - er fail to find the vale of gold -

Copyright MCMXXV by Shapiro, Bernstein & Co. Inc.

# THE GEM

America's Standard  
**Dance Folio.**  
Piano Solo only **1925** Price 50¢ Postpaid

*The outstanding Waltz of the year* **Nightingale** — *with whistling effect*