

Any Way The Wind Blows

By *Henry Creamer & James F. Hanley*



ADELE ROWLAND

Made by
Shapiro, Bernstein & Co.
MUSIC PUBLISHERS
COR. BROADWAY & 47th STREET
New York
Reg. U.S. Pat. Off.

MADE IN U.S.A.

Any Way The Wind Blows

Words by
HENRY CREAMERMusic by
JAMES F. HANLEY

Moderato

The piano introduction consists of two staves. The right hand plays a series of chords and eighth notes in a descending pattern, while the left hand provides a steady bass line with quarter notes and rests.

Lit-tle Wil-lie Ni-chol had a sweet-ie who was fick-le,
Willie kept a-sighing while his sweetie kept a-fly-ing

The first line of the song features a vocal melody on a treble clef staff and piano accompaniment on a grand staff. The piano part includes a dynamic marking of *p* (piano).

She loved to roam, — She'd roam a-round all ov-er town, And she was sel-dom
All o-ver town, He nev-er knew where she went to, Or where she could be

The second line of the song continues the vocal melody and piano accompaniment. The piano part features a consistent harmonic support with chords and moving lines.

home, Sweet-ie act-ed sil-ly and she wor-ried lit-tle Wil-lie, Both night and day
found, When he was-n't phon-ing he was ve-ry bus-y moan-ing, From night till morn

The third line of the song concludes the vocal melody and piano accompaniment. The piano part includes a dynamic marking of *v* (vivace) at the end.

Copyright MCMXXIV by Shapiro, Bernstein & Co. Inc. Cor. Broadway & 47th Street, New York.
Propiedad Asegurada Para La Republica Mexicana MCMXXIV Todos Los Derechos Reservados.
Derechos De Reproduccion Reservados En Cuba y Sud y Central America.

International Copyright Secured.

ALL RIGHTS RESERVED.
Including Public Performance for Profit.

Made in U. S. A.

When he'd come in— and find her out You'd hear poor Wil-lie say:
 You'd hear him say she's gone a - way I won - der where she's gone:

CHORUS

An-y way the wind blows— My sweetie goes, ——— To fol - low where the

wind blows, ——— That's all she knows, ——— She breezes out and then, ———

— She bree-zes in a - gain ——— And then she chan-ges her clothes

pow-ders her nose (*Sh Sh*) And then a-way she goes, Sweet-ies hard to

§ *Start here from patter*

han - dle _____ And when we fight _____ She acts just like a can - dle (*Sh Sh*)
 train goes (*toot toot*) She wants to roam _____ She's al - ways chasing rain - bows _____

— Blows out at night, _____ She bree - zes East (*Sh Sh*) and West (*Sh Sh*) She's
 — And nev - er home, _____ She bree - zes in (*Sh Sh*) and out (*Sh Sh*) She

like a bird with-out a nest. Cause an - y way the wind blows — My sweetie goes, _____
 don't know what it's all a - bout.

Fine

PATTER

Oh! when the cold wind blows My lov - in' sweet - ie goes to

Mex - i - co And when the warm wind blows

She finds the ice and the snow Oh! the strong wind was the wrong wind For it

blew my sweet - ie to sea But the next wind that

blows Had bet - ter blow her back to me For ev - ry time - a

D.S. al Fine

TRY THESE OVER

YOUR MUSIC DEALER

CARRIES THESE SONG HITS
for YOUR PIANO, PHONOGRAPH
or YOUR PLAYER PIANO

SHINE

A Sweeping Dance Hit from Coast to Coast.



Copyright MCMXXIV by Shapiro, Bernstein & Co. Inc.

WHY DID I KISS THAT GIRL?

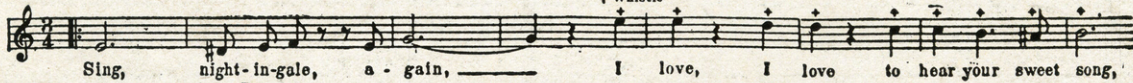
That comedy Song Success



Copyright MCMXXIV by Shapiro, Bernstein & Co. Inc.

NIGHTINGALE

The Waltz Hit of the Year (with whistling effect)



Copyright MCMXXIV by Skidmore Music Co. Inc.

I NEED SOME PETTIN'

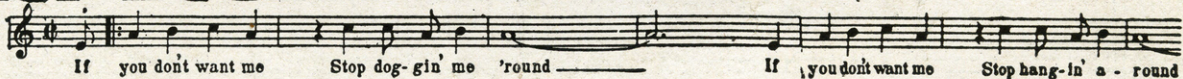
A new Dance Rhythm with a great Lyric



Copyright MCMXXIV by Shapiro, Bernstein & Co. Inc.

IF YOU DON'T WANT ME STOP DOGGIN' ME 'ROUND

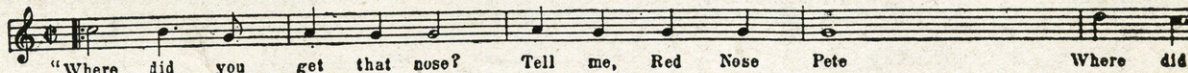
A "Blues" de Luxe



Copyright MCMXXIV by Skidmore Music Co. Inc.

RED NOSE PETE

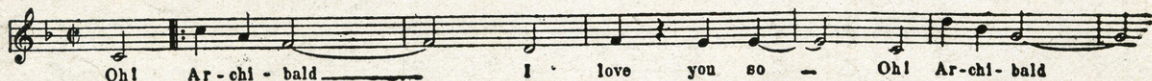
A Clever Comic Concoction



Copyright MCMXXIV by Skidmore Music Co. Inc.

ARCHIBALD

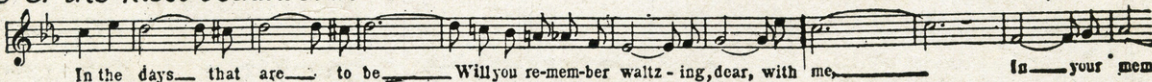
A Leap Year Idea - 1924 Model



Copyright MCMXXIV by Shapiro, Bernstein & Co. Inc.

REMEMBER THE WALTZ

One of the most beautiful in Years



Copyright MCMXXIII assigned to Shapiro, Bernstein & Co. Inc.

THE GEM

America's Standard
Dance Folio
for Piano Solo only
1925
JUST PUBLISHED
Price 50¢ Postpaid

A New European Novelty

The Clock is Playing!

Song and Piano Solo in One Copy