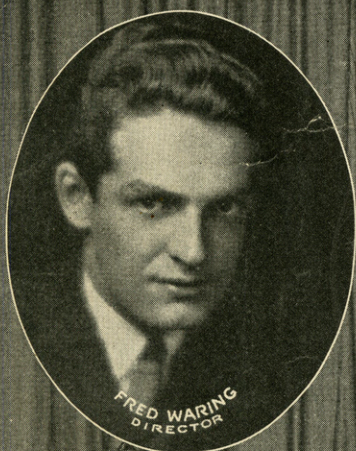




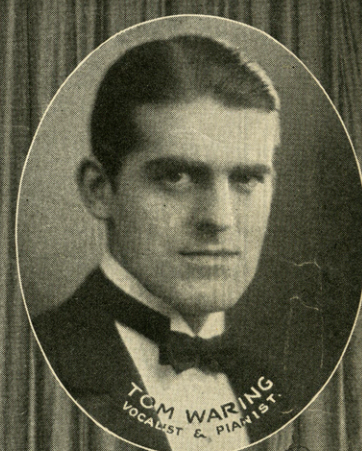
LAFF IT OFF!



By BERT KALMAR *and* HARRY RUBY



FRED WARING
DIRECTOR



TOM WARING
VOCALIST & PIANIST



WARING'S PENNSYLVANIANS

Foster
RICHMOND, VA.



HENRY WATERSON, Inc.
1571 BROADWAY, NEW YORK, N. Y.
WATERSON, BERLIN & SNYDER CO.,
SELLING AGENTS

With
UKULELE ARRANGEMENT

BE SURE TO GET COPIES OF THESE BIG SONG HITS

Because They All Love You

Words by TOMMIE MALIE

Music by JACK LITTLE

I love the trees, the birds and bees, Be-cause they all love you I'll al-ways

The musical score for 'Because They All Love You' features a vocal line in G major with a 2/4 time signature. The lyrics are: 'I love the trees, the birds and bees, Be-cause they all love you I'll al-ways'. The piano accompaniment includes a right-hand part with chords and a left-hand part with a bass line. Dynamics include *p-f*.

Let Me Be The First To Kiss You Good Morning
And The Last To Kiss You Good Night

By AL. BERNARD &
RUSSEL ROBINSON

Let me be the first to kiss you good-morn-ing And the last one to kiss you good-night. Let me just ca-

The musical score for 'Let Me Be The First To Kiss You Good Morning' is in G major, 2/4 time. The lyrics are: 'Let me be the first to kiss you good-morn-ing And the last one to kiss you good-night. Let me just ca-'. The piano accompaniment includes a right-hand part with chords and a left-hand part with a bass line. Dynamics include *p-mf*.

Come On Over

Words by TOMMIE MALLIE

Music by JACK LITTLE

An-y time you're feel-in' lone - some, just come on ov - er. An-y time you're by your 'own - some' just come on ov - er.

The musical score for 'Come On Over' is in G major, 2/4 time. The lyrics are: 'An-y time you're feel-in' lone - some, just come on ov - er. An-y time you're by your 'own - some' just come on ov - er.'. The piano accompaniment includes a right-hand part with chords and a left-hand part with a bass line. Dynamics include *p-f*.

Blue-Eyed Sally

By AL. BERNARD &
RUSSEL ROBINSON
"The Dixie Stars"

Pret-ty lit-tle blue eyed Sal - ly, Bet-ter times are com-in' wait and see.

The musical score for 'Blue-Eyed Sally' is in B-flat major, 2/4 time. The lyrics are: 'Pret-ty lit-tle blue eyed Sal - ly, Bet-ter times are com-in' wait and see.'. The piano accompaniment includes a right-hand part with chords and a left-hand part with a bass line. Dynamics include *p-f*.

Smile Away Your Tears

Words by TOMMIE MALIE
FRED HUGHES

Music by JACK LITTLE

Smile a - way your tears, Al-tho' the blue seems gray, Dark-ness

The musical score for 'Smile Away Your Tears' is in G major, 2/4 time. The lyrics are: 'Smile a - way your tears, Al-tho' the blue seems gray, Dark-ness'. The piano accompaniment includes a right-hand part with chords and a left-hand part with a bass line. Dynamics include *p-f*.

The Above Numbers are Published and Copyrighted by Henry Waterson, Inc. 1571 Broadway, N. Y.
These Songs for sale at all Music Dealers or sent direct for 35¢ or any three for one dollar.

brow, I found a way to live long, So let me tell you how:
 purse, Don't go a-round com-plain-ing, To - mor-row may be worse.

Chorus

"If your bank roll is bent, laff it off. When they
 "If your hair's fall-ing out, laff it off. If your

p-f

call for the rent, laff it off. When a fel-low bor-rows
 wife's get-ting stout, laff it off. When the world looks black and

"ten" and you lend it to him then, All you can do is whist-le
 blue, Think of this be-cause it's true, Grave-yards are filled with guys who'd

"till we meet a - gain." If you feel on the bum, laff it off,
 glad - ly change with you. If you slip on a peel, laff it off,

— If you're caught sell - ing rum, laff it off. — If your
 If you choke on a meal, laff it off. — If the

wif - ie runs a - way, And they bring her back next day, Laff it off, oh!
 Doc - tor says you're dead, Nev - er a - gue keep your head, Laff it off, oh!

broth - er, laff it off!" "If your off!"
 broth - er, laff it off!" "If your off!"

D.S.

BE SURE TO GET COPIES OF THESE BIG SONG HITS

Words by TOMMIE MALIE & ADDY BRITT

Where's My Sweetie Hiding?

Music by JACK LITTLE
DICK FINCH

Oh! tell me where's my sweet-ie hid - ing? Gee! but I'd like to know,
Oh! tell me where's my sweet-ie hid - ing? Went a-way left me flat,

p-f

Let My Home Be Your Home

(When You're Down In Dixieland)

By AL BERNARD &
RUSSEL ROBINSON

Let my home be your home when you're down in Dix-ie - land, — Let my folks be your folks for they

p-f

Words by TOMMIE MALIE & FRED HUGHES

Where The Skies Are Blue

Music by JACK LITTLE

Take me there, where the skies are always blue. Leave me there all a - lone with on - ly

p-f

Words by FRANK WRIGHT & FRANK BESSINGER
(The Radio Franks)

Pretty As A Picture

Music by RUSSEL ROBINSON

Pret - ty as a pic - ture, by a mas - ter hand, Pret - ty as a pic - ture,

p-f

Words by SAM COSLOW & BERNARD GROSSMAN

Radio Lady O'Mine

Music by WRIGHT & BESSINGER
(The Radio Franks)

Sweet ra - di - o la - dy o' mine, All thru the day You're on my

p-f

The Above Numbers are Published and Copyrighted by Henry Waterson, Inc. 1571 Broadway, N. Y.
These Songs for sale at all Music Dealers or sent direct for 35¢ or any three for one dollar.

Also obtainable on all Phonograph Records and Music Rolls.