

1024  
J21  
33

# OH HOW I MISS YOU TO-NIGHT

BY  
Benny Davis  
Mark Fisher  
and  
Joe Burke

WITH  
UKULELE  
ARRANGEMENT



Featured By  
LILLIAN ROTH

ELMER FRY & SON  
Jewelers  
BELLEVILLE, - KANSAS  
Est. 1884  
MUSIC - OPTICAL GOODS - GIFT SHOP

MADE IN  
USA

Irving Berlin, Inc.  
MUSIC PUBLISHERS  
1607 Broadway New York

Copyright © 1934 by Irving Berlin, Inc. All rights reserved. This is a complete and exclusive copyright in the title and in the matter herein. No part of this publication may be reproduced without the written permission of the copyright owner. Printed in the U.S.A.

10/3/74

# OH HOW I MISS YOU TO-NIGHT

BY  
Benny Davis  
Mark Fisher  
and  
Joe Burke

WITH  
**UKULELE**  
ARRANGEMENT



FEATURED BY  
**LOOMIS SISTERS**  
MAXINE & VIRGINIA

MADE IN  
USA

Irving Berlin, Inc.  
MUSIC PUBLISHERS  
1607 Broadway New York

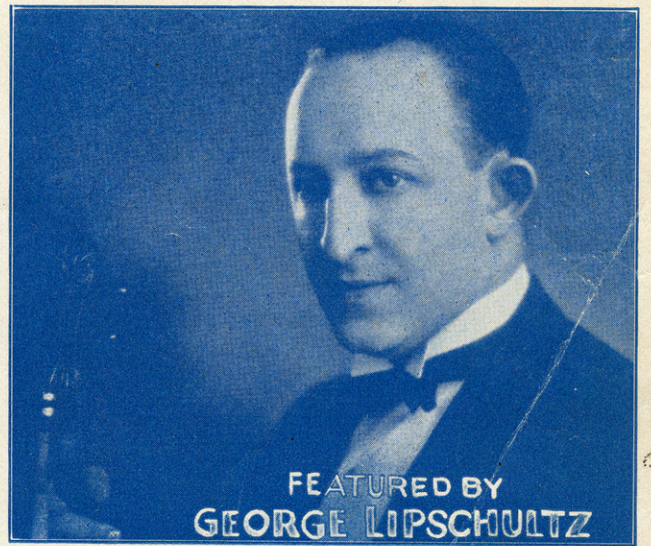
Copyright 1924 by Irving Berlin, Inc. All rights reserved. This song was first published in 1924. It is the property of Irving Berlin, Inc. and is used here by permission of the publisher, Irving Berlin, Inc. No other permission is required for the use of this song in any form.

Isabel Phiman  
Breg 18/35/90

# OH HOW I MISS YOU TO-NIGHT

BY  
Benny Davis  
Mark Fisher  
and  
Joe Burke

WITH  
UKULELE  
ARRANGEMENT



FEATURED BY  
GEORGE LIPSCHULTZ

MADE IN  
USA

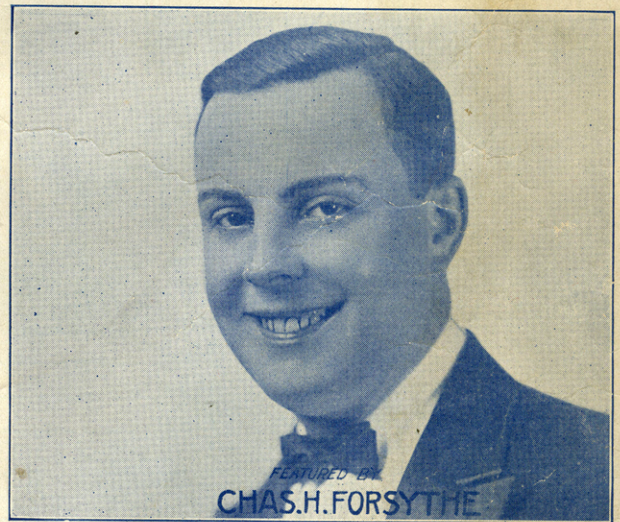
Irving Berlin, Inc.  
MUSIC PUBLISHERS  
1507 Broadway New York

Copyright 1935 by Irving Berlin, Inc. All rights reserved. This song is registered in the Copyright Office of the Library of Congress. Printed in the U.S.A.

# OH HOW I MISS YOU TO-NIGHT

BY  
Benny Davis  
Mark Fisher  
and  
Joe Burke

WITH  
UKULELE  
ARRANGEMENT



MADE IN  
USA

Irving Berlin, Inc.  
MUSIC PUBLISHERS  
1507 Broadway New York

Copyright 1934 by Irving Berlin, Inc. All rights reserved. This sheet music is published by Irving Berlin, Inc., 1507 Broadway, New York, N. Y. It is not to be reproduced in any form without the written permission of Irving Berlin, Inc.

# OH HOW I MISS YOU TO-NIGHT

*Constance Williamson*

BY  
Benny Davis  
Mark Fisher  
and  
Joe Burke

WITH  
UKULELE  
ARRANGEMENT



*Featured by*

**HAROLD WALLACE**

CONDUCTOR of

**SHEA'S HIPPODROME ORCHESTRA**

**BUFFALO, N.Y.**



Irving Berlin, Inc.  
MUSIC PUBLISHERS  
1507 Broadway New York

© 1934 Irving Berlin, Inc. All rights reserved. Printed in U.S.A.

SM 6284

# Oh, How I Miss You To-night

Tune Ukulele

A D F# B

Put Ukulele CAPO on 3rd Fret

By **BENNY DAVIS**  
**JOE BURKE and**  
**MARK FISHER**

Valse moderato (*con espressione*)

*f* *poco rit morendo*

The piano introduction is in 3/4 time, starting with a forte (*f*) dynamic. It features a waltz-like melody in the right hand and a supporting bass line in the left hand. The tempo is marked 'Valse moderato (con espressione)'. The piece concludes with a *poco rit morendo* section, ending with a final chord.

VOICE  
Lento

The vocal line is in 3/4 time, marked 'Lento'. It begins with a key signature of one flat (Bb) and a common time signature (C). The lyrics are: 'The days are so long, seems ev-'ry thing's wrong, For now I'm a - Al - tho' you are gone, still love lin - gers on, I just can't be - The days are so long, seems ev-'ry thing's wrong, For I'm all a -'. Above the staff are four chord diagrams: a Bb major triad, a Bb major triad with a 7th, a Bb major triad with a 9th, and a Bb major triad with a 7th and 9th.

The piano accompaniment for the first vocal line is in 3/4 time, marked *mf*. It provides harmonic support for the vocal line with chords in the right hand and a simple bass line in the left hand.

The second vocal line continues in 3/4 time. The lyrics are: 'lone and blue, I still love you dear, I lieve it's true, A - wake or a - sleep, my lone and blue, Oh Moth - er of mine, for'. Above the staff are three chord diagrams: a Bb major triad with a 7th, a Bb major triad with a 9th, and a Bb major triad with a 7th and 9th.

The piano accompaniment for the second vocal line is in 3/4 time. It continues the harmonic support with chords in the right hand and a bass line in the left hand.

Ukulele arr. by  
MAY SINGHI BREEN

wish you were here, Come back and for - give me please do.  
 thoughts seem to creep, right back to the days spent with you.  
 you how I pine, The night time brings mem'ries of you.

*rit.*

**REFRAIN (with expression)**

*mother version* Oh, how I miss you to - night! Miss you while  
 Oh, how I miss you to - night! Miss you while

*p-mf*

lights are low, Oh, how I need you to -  
 lights are low, Oh, how I need you to -

night! More than you'll ev - er know,  
 night! More than you'll ev - er know,

I made be - lieve for a - while,  
I was a fool just to roam,

Hid - ing each tear with a smile,  
Leav - ing you there all a - lone,  
But my heart won't stop  
For there is - nt an -

ach - ing, - please keep it from break - ing, - Oh pal how I  
oth - er, An - oth - er like Moth - er, Old pal how I

*ad lib.*

*rit.*

miss you to - night!  
miss you to - night!  
night!  
night!

*a tempo*

*poco rit. morendo*

*pp*

## OH HOW I MISS YOU TO-NIGHT

### RECITATION:

There is an old saying that no one can deny,  
"We never miss the water 'til the well runs dry."  
I never knew how true that was, until I started in to roam,  
And left the dearest pal I ever had—alone at home.  
When mother used to whip me I'd get very angry then,  
But I'd gladly take those whippings now, to be back there again.  
And when your Mother scolds you—just listen and don't fight,  
'Cause when she's gone you'll realize a Mother's always right.  
I can picture how she bragged to neighbors, when I was at school,  
And tell them all how smart I was, but I was just a fool.  
But a fool that learned a lesson, and a lesson that is great,  
That's why I'm going back to her, before it is too late.

Note: At the end of recitation sing the last two lines of chorus as follows:—"For there isn't another another, like mother; OLD PAL, HOW I MISS YOU TONIGHT."

Copyright MCMXXIV by IRVING BERLIN, Inc. 1607 B'way N.Y.

STANDARDS OF THE WORLD

"STERLING" ON SILVER  
"IRVING BERLIN" ON SONGS

# THE UP-TO-THE-MINUTE SONG HIT

## I "WANNA" GO WHERE YOU GO — DO WHAT YOU DO THEN I'LL BE HAPPY

Words by  
SIDNEY CLARE  
& LEW BROWN

Music by  
CLIFF FRIEND

### CHORUS

I "wan - na" go where you go \_\_\_\_\_ do what you do \_\_\_\_\_

love when you love then I'll be hap - py \_\_\_\_\_ I "wan - na" sigh when you sigh \_\_\_\_\_

Cry when you cry \_\_\_\_\_ smile when you smile then I'll be hap - py \_\_\_\_\_ If you go \_\_\_\_\_

Copyright MCMXXV by IRVING BERLIN Inc., 1607 Bway, N. Y.  
International Copyright Secured MADE IN U.S.A. All Rights Reserved

COPIES ON SALE WHEREVER MUSIC IS SOLD  
This Number can also be had for your Phonograph and Player Piano



THE MELODY SONG HIT OF THE HOUR

# YEARNING

(JUST FOR YOU)

Words and Music by  
BENNY DAVIS  
and JOE BURKE

CHORUS

Year - ing just for you That's

*p-f*

all I do my dear Learn -

ing why I'm blue I wish that you were

Copyright MCMXXV by Irving Berlin Inc. 1607 Broadway, N.Y.C.  
International Copyright Secured Made in U.S.A. All Rights Reserved

COPIES ON SALE WHEREVER MUSIC IS SOLD  
This Number can also be had for your Phonograph and Player Piano



THE MASTER SONG BY THE MASTER WRITER  
IRVING BERLIN'S

# REMEMBER

CHORUS

By IRVING BERLIN

Re - mem - ber the night, — the night — you said — "I

love you" — Re - mem - ber? — Re -

mem - ber you vowed — by all — the stars — a -

Copyright 1925 by IRVING BERLIN, Inc., 1607 B'way, N. Y.  
All Rights Reserved MADE IN U. S. A. International Copyright Secured

COPIES ON SALE WHEREVER MUSIC IS SOLD  
This Number can also be had for your Phonograph and Player Piano



# THE MELODY SONG HIT OF THE HOUR

# YEARNING

(JUST FOR YOU)

CHORUS

Words and Music by  
BENNY DAVIS  
and JOE BURKE

Yearning just for you ——— That's

all I do ——— my dear ——— Learn -

ing why I'm blue ——— I wish that you ——— were

Copyright MCMXXV by Irving Berlin Inc. 1607 Broadway, N.Y.C.  
International Copyright Secured      Made in U.S.A.      All Rights Reserved

COPIES ON SALE WHEREVER MUSIC IS SOLD  
This Number can also be had for your Phonograph and Player Piano



THE MELODY SONG HIT OF THE HOUR

# YEARNING

(JUST FOR YOU)

CHORUS

Words and Music by  
BENNY DAVIS  
and JOE BURKE

Yearn - ing just for you — That's

all I do — my dear — Learn -

ing why I'm blue — I wish that you — were

Copyright MCMXXV by Irving Berlin Inc. 1607 Broadway, N.Y.C.  
International Copyright Secured Made in U.S.A. All Rights Reserved

COPIES ON SALE WHEREVER MUSIC IS SOLD  
This Number can also be had for your Phonograph and Player Piano