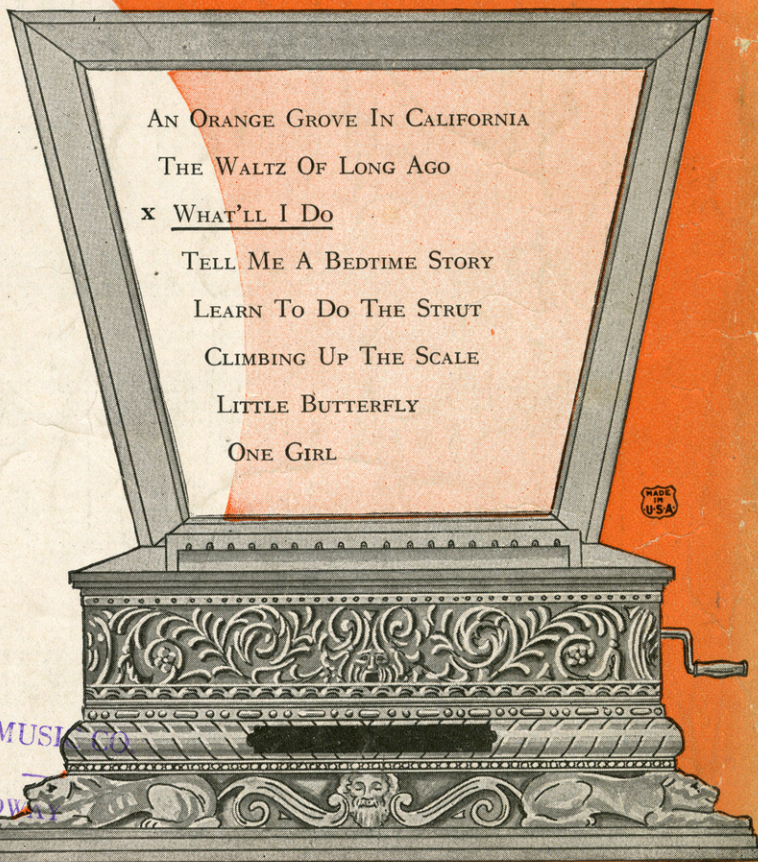


77D

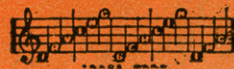
# WHAT'LL I DO

*Featured in*  
THE NEW MUSIC BOX REVUE  
*Words and Music*  
*by*  
IRVING BERLIN



AN ORANGE GROVE IN CALIFORNIA  
THE WALTZ OF LONG AGO  
x WHAT'LL I DO  
TELL ME A BEDTIME STORY  
LEARN TO DO THE STRUT  
CLIMBING UP THE SCALE  
LITTLE BUTTERFLY  
ONE GIRL

NEVILLE-MARPLE MUSIC CO.  
— AT PLATT'S —  
620 SOUTH BROADWAY  
LOS ANGELES



Irving Berlin, Inc.  
MUSIC PUBLISHERS  
1607 Broadway New York

# THE SENSATIONAL SONG HIT

FROM  
IRVING BERLIN'S  
THIRD ANNUAL  
MUSIC BOX REVUE

## AN ORANGE GROVE IN CALIFORNIA

### CHORUS

Arm in arm we will rove thro' a sweet or-ange grove Far a -

*pf*

way in Cal-i - for - nia Like a bird I

mean to fly West a - gain And I'll hold her close to my

*fz*

SM 6398

# WHAT'LL I DO?

To play with piano tune Uke as follows

4th String (nearest player) 1st String  
3rd String 2nd String  
Put Uke Capo on 1st Fret

By IRVING BERLIN

*Valse moderato*

Piano

Ukulele Arrangement by  
MAY SINGHI BREEN

VOICE

Gone is the ro-mance that  
Do you re-mem-ber a

*Vamp.*

was so di-vine— 'Tis brok-en and can-not be men-  
night filled with bliss?— The moon-light was soft-ly de-scen-

ded ding You must go your way and I must go mine, But  
Your lips and my lips were tied with a kiss, A

now that our love dreams have end - ed,  
kiss with an un - hap - py end - ing.

CHORUS

What 'll I do when you are far a - way And

I am blue, what 'll I do what 'll I do When

I am wond' - ring who is kiss - ing you What 'll I

do \_\_\_\_\_ What 'll I do \_\_\_\_\_ with just \_\_\_\_\_ a phot - o -

graph \_\_\_\_\_ To tell \_\_\_\_\_ my troub - les to \_\_\_\_\_ When I'm a -

lone \_\_\_\_\_ with on - ly dreams \_\_\_\_\_ of you \_\_\_\_\_ That won't \_\_\_\_\_ come

true, What 'll I do? \_\_\_\_\_ What 'll I do? \_\_\_\_\_

FROM  
THE COLLECTION OF  
*Gene Blakely*



# THE WALTZ SONG SENSATION

FROM IRVING BERLIN'S NEW MUSIC BOX REVUE

## THE WALTZ OF LONG AGO

Valse Moderato

Words and Music  
by IRVING BERLIN

CHORUS

I love to dance the dream-y waltz of long a - -  
go When grand ma and grand pa were  
girl and beau I can see them there

Copyright MCMXXIII by IRVING BERLIN Inc. 1607 Bway, N.Y.  
International Copyright Secured All Rights Reserved

COPIES ON SALE WHEREVER MUSIC IS SOLD  
This Number can also be had for your Phonograph and Player Piano