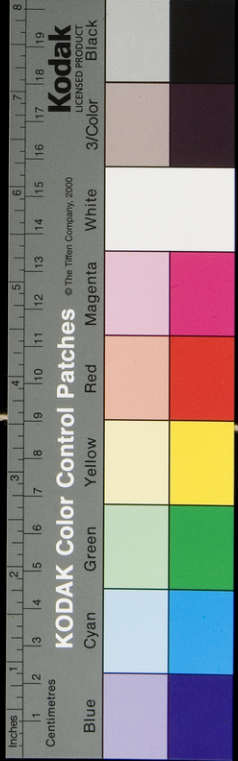


3972



Handwritten text in a cursive script, likely a manuscript or ledger, written on aged paper. The text is organized into several columns and rows, with some lines starting with circular symbols. The script is dense and characteristic of historical South Asian or Southeast Asian writing systems.

3972

Handwritten text in an ancient script, likely Tamil, arranged in approximately 10 horizontal lines. The script is finely etched into the surface of the palm leaf.



Handwritten text in an ancient script, likely Tamil, located below the peacock drawing. It consists of a few characters, possibly a signature or a reference mark.

3972



3972



3972

