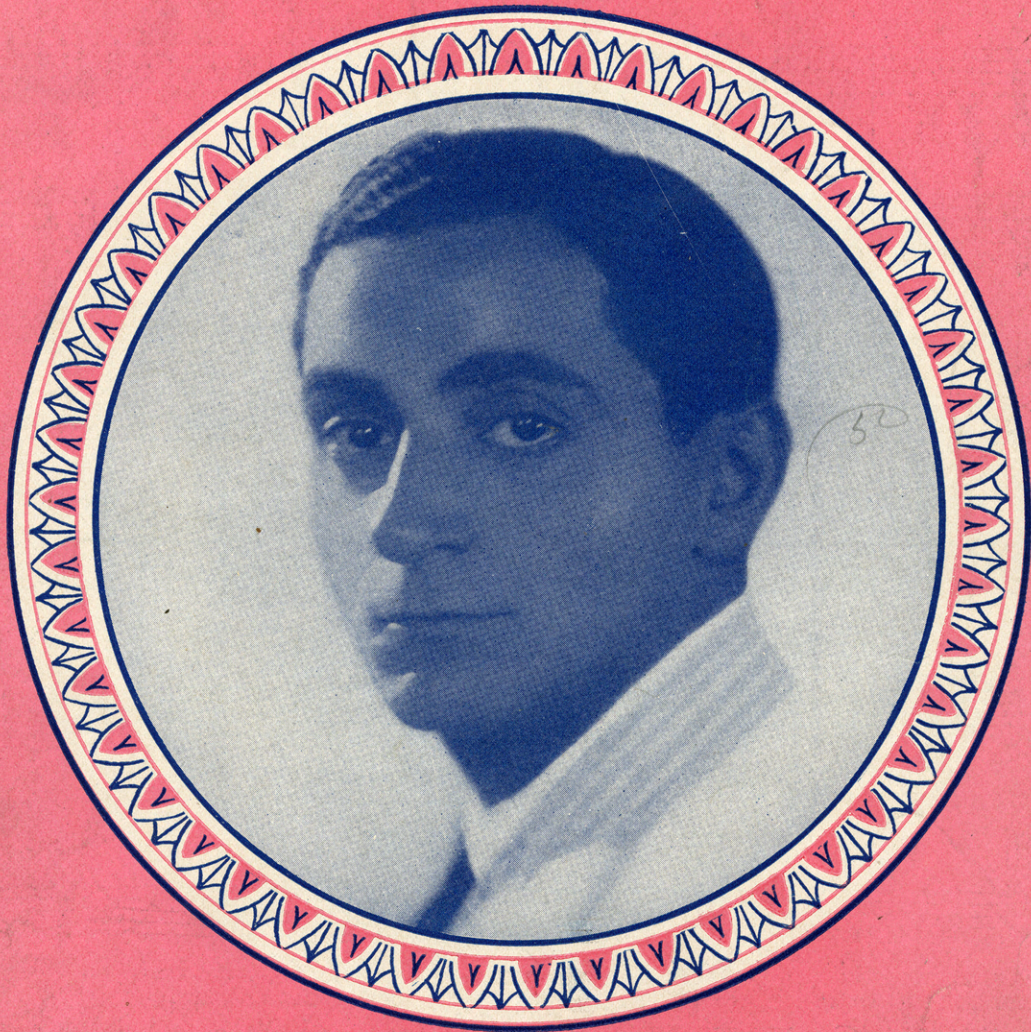


IRVING BERLIN'S REMEMBER



Irving Berlin, Inc.
MUSIC PUBLISHERS
1607 Broadway New York

MADE IN
USA

1st edition

15

REMEMBER

Tune Ukulele
G C E A

By IRVING BERLIN

Valse moderato

The first system of the piano introduction is in 3/4 time, marked 'Valse moderato'. It begins with a treble clef and a key signature of one flat (B-flat). The music features a series of chords in the right hand and a simple bass line in the left hand. A dynamic marking of *f* (forte) is present.

The second system of the piano introduction continues the piece. It includes a section marked 'Vamp' with a dynamic marking of *p* (piano). The music consists of sustained chords in the right hand and a simple bass line in the left hand.

VOICE

The vocal line and piano accompaniment for the first part of the lyrics. The vocal line is in a treble clef with a key signature of one flat. The piano accompaniment is in a grand staff (treble and bass clefs). The lyrics are: "One lit - tle kiss, a mo - ment of bliss, Then In - to my dreams, you wan - dered it seems, And".

The vocal line and piano accompaniment for the second part of the lyrics. The vocal line continues with the lyrics: "hours then of there deep came re - gret a day;". The piano accompaniment continues with chords and a bass line.

Ukulele arr. by
MAY SINGHI BREEN

Copyright 1925 by IRVING BERLIN, Inc., 1607 B'way, N. Y.
All Rights Reserved MADE IN U. S. A. International Copyright Secured

One lit - tle smile, and aft - er a while, A
 You loved me too, my dreams had come true, And

long - ing the to world for - get.
 all the world was May;

One lit - tle heart - ache, left as a to - ken,
 But soon the May time, turned to De - cem - ber,

One lit - tle play - thing, care - less - ly bro - ken:
 You had for - got - ten, do you re - mem - ber.

rall.

CHORUS

Re - mem - ber the night, — the night — you said — “I

p-f

love you” — Re - mem - ber? — Re -

mem - ber you vowed — by all — the stars — a -

bove you — Re - mem - ber? — Re - mem - ber we

found a lone - ly spot And aft - er I

learned to care a lot; You prom - ised that

you'd for - get me not But you for -

got to re - mem - ber Re - mem - ber.



THE UP-TO-THE-MINUTE SONG HIT

I "WANNA" GO WHERE YOU GO — DO WHAT YOU DO THEN I'LL BE HAPPY

Words by
SIDNEY CLARE
& LEW BROWN

Music by
CLIFF FRIEND

CHORUS

I "wan - na" go where you go _____ do what you do _____

love when you love then I'll be hap - py _____ I "wan - na" sigh when you sigh _____

Cry when you cry _____ smile when you smile then I'll be hap - py _____ If you go

Copyright MCMXXV by IRVING BERLIN Inc., 1607 Bway, N. Y.
International Copyright Secured MADE IN U.S.A. All Rights Reserved

COPIES ON SALE WHEREVER MUSIC IS SOLD
This Number can also be had for your Phonograph and Player Piano