

3/31/74

C Low



E♭ Medium



F High



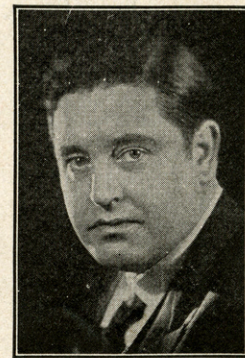
JUST A COTTAGE SMALL (BY A WATERFALL)



MADE IN U. S. A.

WORDS BY
B. G. DESYLYA

MUSIC BY
JAMES F. HANLEY



SUNG BY
JOHN MCCORMACK

WITH
UKULELE
ACCOMPANIMENT

HARMS
INCORPORATED
NEW YORK

BY THE COMPOSER OF "AT DAWNING"

To my friend Rhys Morgan

MY DESIRE

Words by
NELLE RICHMOND EBERHART

Music by
CHARLES WAKEFIELD CADMAN
Op. 84, No. 2

Moderato con moto

Piano

mf If one day some fair God should

mf *mp*

Detailed description: This system contains the first two staves of music. The vocal line is on a treble clef staff with a key signature of three flats and a 3/4 time signature. The piano accompaniment is on a grand staff (treble and bass clefs). The piano part begins with a *mf* dynamic and features a triplet of eighth notes in the right hand. The lyrics 'If one day some fair God should' are written below the vocal line.

bend From Heav - en's blue And

Detailed description: This system contains the third and fourth staves of music. The vocal line continues with the lyrics 'bend From Heav - en's blue And'. The piano accompaniment continues with a *mp* dynamic. The lyrics are written below the vocal line.

smile up - on me as a friend - Will oft - en do, If

poco cresc. *dim.* *mp*

Detailed description: This system contains the fifth and sixth staves of music. The vocal line continues with the lyrics 'smile up - on me as a friend - Will oft - en do, If'. The piano accompaniment includes markings for *poco cresc.* and *dim.*, and ends with a *mp* dynamic. The lyrics are written below the vocal line.

he should ask my heart's de - sire, He could not touch my breast with

Detailed description: This system contains the seventh and eighth staves of music. The vocal line concludes with the lyrics 'he should ask my heart's de - sire, He could not touch my breast with'. The piano accompaniment continues with a *mp* dynamic. The lyrics are written below the vocal line.

Copyright MCMXX. V by HARMS Inc., N.Y.
International Copyright Secured

ALL RIGHTS RESERVED Including public performance for profit

HARMS, Inc. - - 62 West 45th Street, N. Y. C.

SM6565

Just A Cottage Small

Words by
B. G. DE SYLVA
Ukulele arr. by May Singhi Breen

(By A Waterfall)
Tune Ukulêle

Music by
JAMES F. HANLEY

A D F# B
Put Uke Capo on 1st fret

Slowly, with great simplicity

Piano

mf

p L.H. *rall.*

p a tempo.

When you've wan-dered a-lone on the high-ways With the
It's a joy to be ea-ger and youth-ful With a

p a tempo

wind and the rain in your hair; When your
cour-age that nev-er is spent; Oh, it's

wis-dom you've bought As you strug-gled for naught Toward the
youth that will long For the road and a song, And it's

cresc. *ten.*

cresc. *ten.*

Copyright MCMXXV by HARMS Inc., N. Y.
International Copyright Secured

ALL RIGHTS RESERVED Including public performance for profit

f *rall. e dim.* *p a tempo*

rain - bow that van - ished in air; Then a
youth that is nev - er con - tent; So we

f *rall. e dim.* *p a tempo*

wea - ri - ness comes and a long - ing For a
an - swer the call of am - bi - tion; For in

cresc.

shel - ter and com - fort a - part. And you
pow - er we feel there is bliss. Though our

cresc.

mf *poco allarg.* *f* *p*

smile on the past That has shown you at last The de -
vict' - ry is won, When it's all said and done, There is

mf *poco allarg.* *f* *p*

rall. e dim.

- sire that is deep in your heart:
noth - ing so pre - cious as this:

rall. e dim.

Refrain
mp

molto tranquillo

Just a cot - tage small by a wa - ter - fall, At the clos - ing of the

mp *molto tranquillo* *p*

day; With some one to wait by a gar - den - gate Who will

p

charm your troub - les a - way, Be it hum - ble and all

cresc.

cresc.

tum-ble down, If there's love to wel - come you, Just a

mp

cot - tage small by a wa - ter - fall Is a

pp molto tranquillo

p

pp molto tranquillo

p

place where . dreams come true! Just a

1 rall. e dim.

ten.

a tempo

ten.

rall. e dim.

ten.

a tempo mf

place where dreams come true!

2 poco cresc. e rit.

f

poco allarg.

poco cresc. e rit.

f

poco allarg.

ff

*Red. **

BY THE COMPOSER OF "AT DAWNING"

To my friend Rhys Morgan

MY DESIRE

Words by NELLE RICHMOND EBERHART

Music by CHARLES WAKEFIELD CADMAN
Op. 84, No. 2

Moderato con moto

Piano

mf If one day some fair God should

mf *mp*

bend From Heav - en's blue And

smile up - on me as a friend - Will oft - en do, If

poco cresc. *dim.* *mp*

he should ask my heart's de - sire, He could not touch my breast with

Copyright MCMXXV by HARMS Inc., N.Y.
International Copyright Secured

ALL RIGHTS RESERVED Including public performance for profit

HARMS, Inc. . . 62 West 45th Street, N. Y. C.

CHARLES WAKEFIELD CADMAN'S BEAUTIFUL ROSE MELODY

A ROSE FOR EVERY HEART

Words by
NELLE RICHMOND EBERHART

Music by
CHARLES WAKEFIELD CADMAN

Refrain *a tempo.*

mp-f

Ros - es bloom - up - on a thou - sand hills,

a tempo.

Fair - as dawn - and red as morn - ing ray,

Sweet - with in - cense they dance up-on the spray,

Ros - es cov - er all the world to - day;

Copyright MCMXXV by HARMS Inc., N. Y. *International Copyright Secured*
ALL RIGHTS RESERVED Including public performance for profit

HARMS, Inc. - - 62 West 45th Street, N. Y. C.