

# IF YOU SEE THAT GAL OF MINE SEND HER HOME



WORDS BY  
**SAM M. LEWIS**  
& **JOE YOUNG**  
MUSIC BY  
**FRED E. AHLERT**

*Barbelle*

**HENRY WATERSON, Inc.**  
1571 BROADWAY, NEW YORK, N. Y.  
WATERSON, BERLIN & SNYDER  
SELLING AGENTS

MADE  
IN  
U.S.A.

BE SURE TO GET COPIES OF THESE BIG SONG HITS

Because They All Love You

Words by TOMMIE MALIE

Music by JACK LITTLE

I love the trees, the birds and bees, Be-cause they all love you I'll al-ways

The musical score for 'Because They All Love You' features a vocal line in treble clef and a piano accompaniment in grand staff. The piano part includes a dynamic marking of *p-f* (piano-forte).

Let Me Be The First To Kiss You Good Morning

And The Last To Kiss You Good Night

By AL. BERNARD & RUSSEL ROBINSON

Let me be the first to kiss you good-morn-ing And the last one to kiss you good-night. Let me just ca-

The musical score for 'Let Me Be The First To Kiss You Good Morning' features a vocal line in treble clef and a piano accompaniment in grand staff. The piano part includes a dynamic marking of *p-mf* (piano-mezzo-forte).

Come On Over

Words by TOMMIE MALLIE

Music by JACK LITTLE

An-y time you're feel-in' lone - some, just come on ov - er. An-y time you're by your 'own - some' just come on ov - er.

The musical score for 'Come On Over' features a vocal line in treble clef and a piano accompaniment in grand staff. The piano part includes a dynamic marking of *p-f* (piano-forte).

Blue-Eyed Sally

By AL. BERNARD & RUSSEL ROBINSON  
"The Dixie Stars"

Pret-ty lit-tle blue eyed Sal - ly, Bet-ter times are com-in' wait and see.

The musical score for 'Blue-Eyed Sally' features a vocal line in treble clef and a piano accompaniment in grand staff. The piano part includes a dynamic marking of *p-f* (piano-forte).

Smile Away Your Tears

Words by TOMMIE MALIE  
FRED HUGHES

Music by JACK LITTLE

Smile a - way your tears, Al-tho' the blue seems gray, Dark-ness

The musical score for 'Smile Away Your Tears' features a vocal line in treble clef and a piano accompaniment in grand staff. The piano part includes a dynamic marking of *p-f* (piano-forte).

The Above Numbers are Published and Copyrighted by Henry Waterson, Inc. 1571 Broadway, N. Y.  
These Songs for sale at all Music Dealers or sent direct for 35¢ or any three for one dollar.

Also obtainable on all Phonograph Records and Music Rolls.

SM 6551

# If You See That Gal Of Mine

Uke. arr. by Jeanné Gravelle

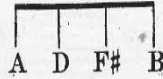
(Send Her Home)

Chorus adapted from a  
Beethoven melody

Words by  
SAM M. LEWIS  
and JOE YOUNG

Tune-A-Uke

By FRED E. AHLERT



Valse moderato

Piano

Voice



"Good-bye pal you're leav-ing for the ci-ty,"  
While the train was speed-ing from the sta-tion,

*Till ready*  
*pp* *poco rall.* *p*

I heard some-one say, Just the oth-er day. "Think of me while you're down in the  
On it's mer-ry way, To the ci-ty gay. Some-one still was stand-ing at the

ci-ty, And take a look a-round Broad-way?"—  
sta-tion, With tear-dimmed eyes that seemed to say.

Chorus

"If you see that gal of mine, send her

*p-f*

home, send her home. Must my heart for-

ev-er pine? send her home, send her

home. If you think she cares a

lit - tle Tell her that I'm still a -

lone. If you see that gal of

mine, send her home send her

home? "If you home?"

# BE SURE TO GET COPIES OF THESE BIG SONG HITS

Words by **TOMMIE MALIE & ADDY BRITT**

## Where's My Sweetie Hiding?

Music by **JACK LITTLE & DICK FINCH**

Oh! tell me where's my sweet-ie hid - - ing? Gee! but I'd like to know,  
 Oh! tell me where's my sweet-ie hid - - ing? Went a-way left me flat,

## Let My Home Be Your Home

(When You're Down In Dixieland)

By **AL. BERNARD & RUSSEL ROBINSON**

Let my home be your home when you're down in Dix-ie - land, — Let my folks be your folks for they

Words by **TOMMIE MALIE & FRED HUGHES**

## Where The Skies Are Blue

Music by **JACK LITTLE**

Take me there, where the skies are always blue. Leave me there all a - lone with on - ly

Words by **FRANK WRIGHT & FRANK BESSINGER**  
 (The Radio Franks)

## Pretty As A Picture

Music by **RUSSEL ROBINSON**

Pret - ty as a pic - ture, by a mas - ter hand, Pret - ty as a pic - ture,

Words by **SAM COSLOW & BERNARD GROSSMAN**

## Radio Lady O' Mine

Music by **WRIGHT & BESSINGER**  
 (The Radio Franks)

Sweet ra - di - o la - dy o' mine, All thru the day You're on my

The Above Numbers are Published and Copyrighted by Henry Waterson, Inc. 1571 Broadway, N. Y.  
 These Songs for sale at all Music Dealers or sent direct for 35¢ or any three for one dollar.

Also obtainable on all Phonograph Records and Music Rolls.