

IF YOU KNEW
SUSIE
LIKE I KNOW SUSIE

by
B. G. De Sylva



AL JOLSON
in "Big Boy."



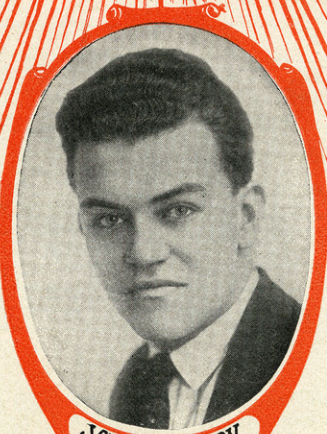
EDDIE CANTOR
in "Kid Boots"



WILLIE HOWARD
in "Sky High"



JACK ROSE
in "Passing Show"



JAY C. FLIPPEN
in "June Days."

Mildred M.

MADE IN U.S.A.

Music
PUBLISHERS
Shapiro
Bernstein
& Co.
COR. BROADWAY & 47th STREET
New York.
REG. U.S. PAT. OFF.

Try this over on your Piano

The Melody That Made You Mine

Words by
CLIFF FRIENL

Uke in Bb
With Piano
Tune Thus
F Bb D G

Music by
W. C. POLLA

Refrain

It was a moon - light, Beau-ti-ful June night, We waltzed this

sweet mel-o - dy, I held you near me Called you "my dear -

ie" And you whis-pered that you loved me, Mu-sic en-tran -

cing, Kept us a dan - cing, Seemed like a mes-sage di-

Arr. for the Uke. by Dick Konter.

Copyright MCMXXV by Shapiro, Bernstein & Co. Inc. Cor. Broadway & 47th Street New York.

Propiedad Asegurada Para La Republica Mexicana MCMXXV Todos Los Derechos Reservados.

Derechos De Reproduccion Reservados En Cuba y Sud y Central America.

International Copyright Secured.

ALL RIGHTS RESERVED.
Including Public Performance For Profit.

Made in U. S. A.

Complete Copies may be had where you bought this

SM 6549

Uke in C
With Piano
Tune Thus

G	C	E	A	

IF YOU KNEW SUSIE

(Like I Know Susie)

By B. G. De SYLVA

Moderato

Piano

The piano introduction consists of two staves. The right hand starts with a treble clef and a key signature of one sharp (F#). It begins with a series of chords and eighth notes, marked with a forte (f) dynamic. The left hand starts with a bass clef and plays a simple bass line with quarter notes.

The piano continuation continues with two staves. It features a 'Vamp' section with a 'mp stacc.' (mezzo-piano staccato) marking. The right hand has chords and some melodic lines, while the left hand continues with a bass line. Dynamics include sf (sforzando) and mp (mezzo-piano).

VOICE

I have got a sweet-ie known as Su - sie In the words of
Su - sie has a per - fect rep - u - ta - tion No one ev - er

The voice part is written on a single staff with guitar chord diagrams above it. The piano accompaniment is on two staves. The lyrics are aligned with the vocal melody.

Shake-speare she's a "wow" Though all of you
saw her on a spree No - bo - dy knows

The voice part continues with guitar chord diagrams. The piano accompaniment provides harmonic support for the vocal lines.

Arr. for the Uke. by "Dick Konter"

Copyright MCMXXV by Shapiro, Bernstein & Co. Inc. Cor. Broadway & 47th Street, New York
Propiedad Asegurada Para La Republica Mexicana MCMXXV Todas Los Derechos Reservados
Derechos De Reproduccion Reservados En Cuba y Sud y Central America

International Copyright Secured

ALL RIGHTS RESERVED
Including Public Performance For Profit

Made in U. S. A.

what a chas - sis! We went ri - ding She did - n't balk
she pos - ses - ses, Out in pub - lic How she can yawn

Back from You - kers I'm the one that had to walk! If
In a par - lor You would think the war was on If

you knew Su - sie like I know Su - sie Oh!
you knew Su - sie like I know Su - sie Oh!

Oh! what a girl. — If girl.
Oh! what a girl.

mf *f*

Mary Earl's HAWAIIAN SONG FOLIO
Price 50¢ Postpaid Containing BALLADS, NONSENSE SONGS etc. with UKELELE Accompaniment.

TRY THESE OVER
YOUR MUSIC DEALER CARRIES THESE SONG HITS
 Every copy contains a **UKELELE** part

AT THE END OF THE ROAD

A New Ballad by the Writers of "INDIANA"



At the end of the road, The long dust - y road, There's peace, there's con - tent - ment and rest.

Copyright MCMXXIV by Shapiro, Bernstein & Co. Inc.

THE ONLY ONLY ONE (for me)

The dance craze of the day

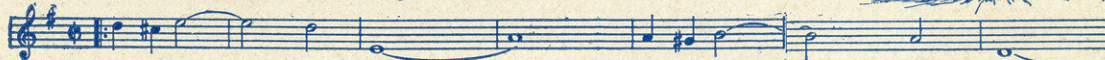


If you would be the on - ly on - ly one for me Then I would be the on - ly on - ly one for

Copyright MCMXXIV by Shapiro, Bernstein & Co. Inc.

PETER PAN (I Love You)

Dedicated to Miss Marilyn Miller



Pe - ter Pan, I love you Loved you from the start

Copyright MCMXXIV by Shapiro, Bernstein & Co. Inc.

ALABAMA BOUND

AL. JOLSON'S Big Hit.



I'm Al - a - bam - y bound There'll be no "Heeb - ie Jeeb - ies" hangin' round, Just gave the mean - est

Copyright MCMXXV by Shapiro, Bernstein & Co. Inc.

AIN'T MY BABY GRAND?

A Toe-tickling mirth provoker by the writers of "WHY DID I RISS THAT GIRL?"



Here she comes a - cross the floor AIN'T MY BA - BY GRAND? Just what I've been wait - in' for AIN'T

Copyright MCMXXV by Shapiro, Bernstein & Co. Inc.

THE MELODY THAT MADE YOU MINE

VINCENT LOPEZ' Waltz Hit in the "GREENWICH VILLAGE FOLLIES"



It was a moon - light, Beau - ti - ful June night, We waltzed this sweet mel - o - dy; I held you

Copyright MCMXXV by Shapiro, Bernstein & Co. Inc.

'WAY OUT WEST IN KANSAS

The Radio hit - lots of extra choruses



Folks don't stay out ve - ry late 'Way out West in Kan - sas, They take the side - walks in at eight

Copyright MCMXXIV by Shapiro, Bernstein & Co. Inc.

THE VALE OF GOLDEN DREAMS

A Ballad with a real appeal



When the sun is in the West And birds have gone to rest I never fail to find the vale of gold

Copyright MCMXXV by Shapiro, Bernstein & Co. Inc.

THE GEM America's Standard **Dance Folio**
 for Piano Solo only **1925** Price 50¢ Postpaid

The outstanding Waltz of the year **Nightingale** with whistling effect