

POPULAR HITS PRODUCED IN THE MODERN COMIC OPERA

THE  
**JOLLY  
BARON**

OR "THE MILLER'S DAUGHTER"

AS PRESENTED BY  
THE LA SALLE THEATRE CO.

BOOK BY  
BURKHARDT & HOFFMAN

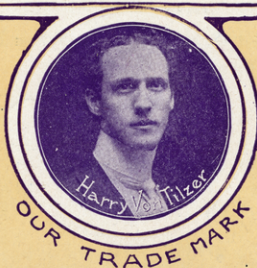
ACT ONE

"Oh! Marjory" . . . . .	60
"I'm the Miller's Daughter" . . . . .	75
"Let the Band Play a Pleasing Tune" . . . . .	60
"Maydee" . . . . .	60
"Mum's the Word" . . . . .	60
"The Highly Important Fly" . . . . .	60

ACT TWO

"A Sail On the Tail of a Whale" . . . . .	60
"Kalamazoo Is No Place For You" . . . . .	60
"Down On the South Sea Isle" . . . . .	60
"In Vacation Time" . . . . .	60
"The Magic Man" . . . . .	60
"Laughing Song" . . . . .	60

LYRICS BY  
ARTHUR J.  
LAMB



MUSIC BY  
HARRY  
VON TILZER

**HARRY VON TILZER**  
MUSIC PUBLISHING CO.  
37 W 28<sup>th</sup> ST NEW YORK, N.Y. CHICAGO, ILLINOIS. LONDON

SM 366

# "Down on the South Sea Isle"

From the Modern Comic Opera "THE FISHER MAIDEN."

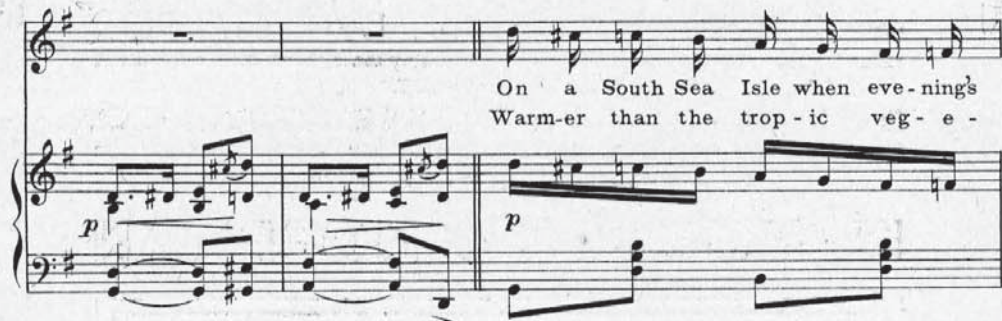
Lyric by  
ARTHUR J. LAMB.

Music by  
HARRY VON TILZER.

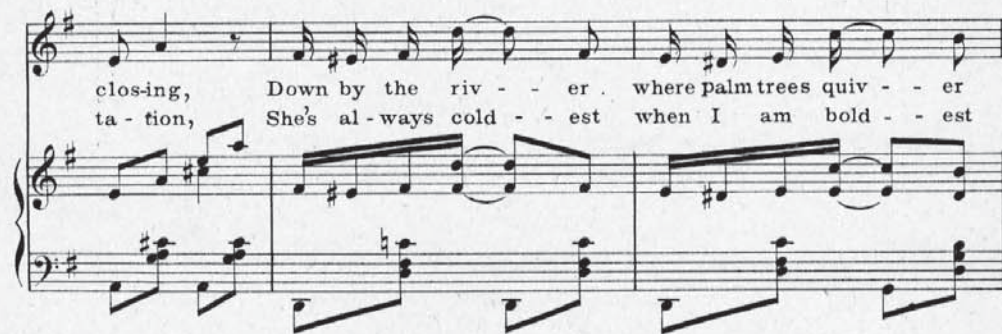
And<sup>te</sup> Mod<sup>to</sup>



Piano introduction in G major, 2/4 time. The right hand features a series of chords and arpeggios, while the left hand plays a simple bass line. Dynamics include *f* and *fz*.



First vocal line: "On a South Sea Isle when eve-nings Warm-er than the trop-ic veg-e-". The piano accompaniment is in G major, 2/4 time, with a dynamic of *p*.



Second vocal line: "closing, Down by the riv - - er where palm trees quiv - - er ta - tion, She's al - ways cold - - est when I am bold - - est". The piano accompaniment continues in G major, 2/4 time.

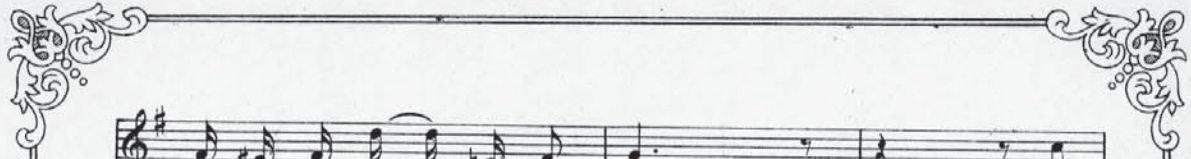


Third vocal line: "You can see my dusk - y love re - pos - ing, She should have a diff - 'rent oc - cu - pa - tion,". The piano accompaniment continues in G major, 2/4 time.

Copyright, 1903, by Harry Von Tilzer Music Pub. Co.

All Singing and Performing rights reserved

English Copyright secured.



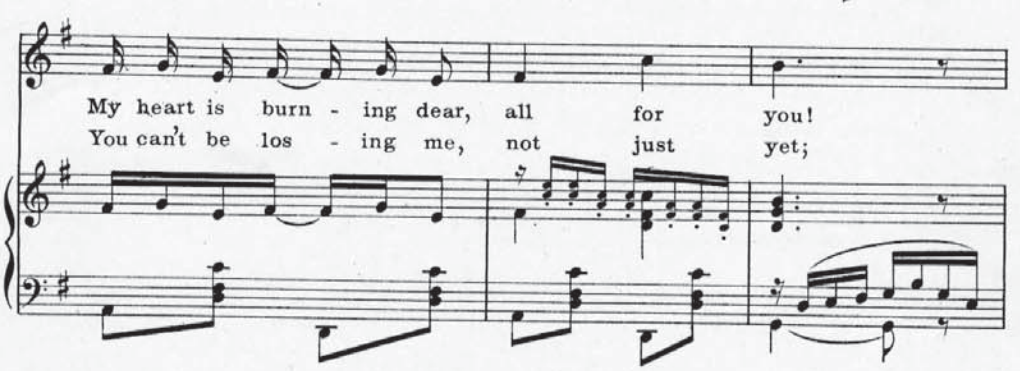
Dazz-ling and grace - ful is she; My  
And per-haps learn to love me; My



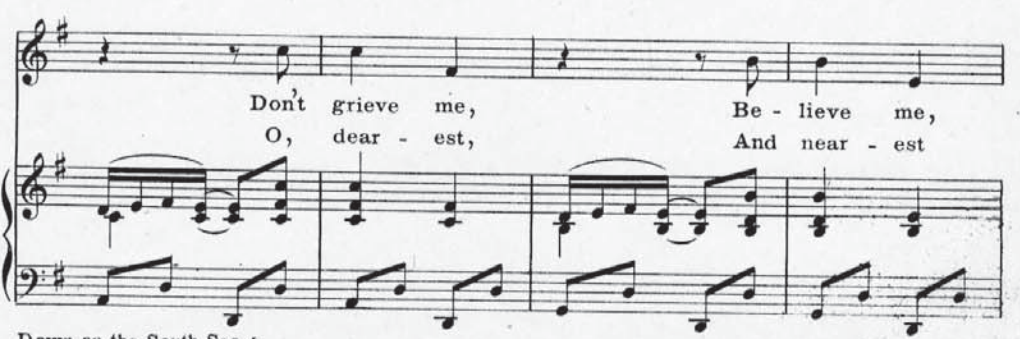
night love, My bright love, I'm al-ways yearn-ing dear,  
night love, My bright love, Tho' you're re - fus - ing me,



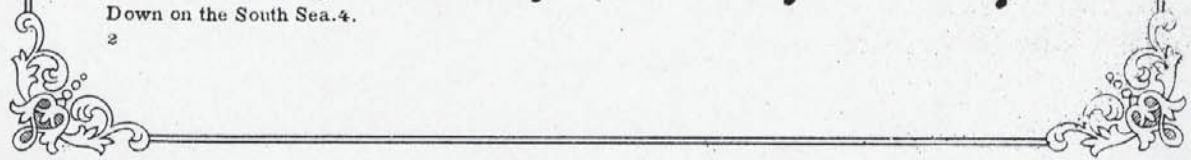
My heart is burn - ing dear, all for you!  
You can't be los - ing me, not just yet;



Don't grieve me, Be - lieve me,  
O, dear - est, And near - est



Down on the South Sea. 4.  
2



Have no a - larms, But let your charms,  
Let your heart beat Near mine, my sweet,

Rest in my arms, my own! —  
O what a treat, my own! —

CHORUS.

Come while the moon is a shin - - ing

My love O, don't be de - clin - ing, For you know my heart's a



pin - ing, Just for a glance or a smile;

While twinkling stars are a glist - 'ning Hon-ey it's well worth your

while; Answer, there's no - bod - y list - 'ning

*poco rall. e dim.*

Down on the South Sea Isle. Isle.

*poco rall. e dim.*

Down on the South Sea. 4.



**HARRY VON TILZER'S  
NEWEST WRITINGS**

SONGS

"When the Frost Is On the Pumpkin"



"ALEXANDER"



"HAVE YOU SEEN MAGGIE RILEY?"



"DOWN AT THE BABY STORE"



"Down Where the Sweet Potatoes Grow"



"MY PRETTY LITTLE KICKAPOO"



"LOUISA SCHMIDT"



"SWEET DORA DELL"



INSTRUMENTAL

"THE MOUNTEBANK"

For Sale By Dealers or The  
**The Harry Von Tilzer Music Pub. Co.**  
37 West 28th Street, New York