



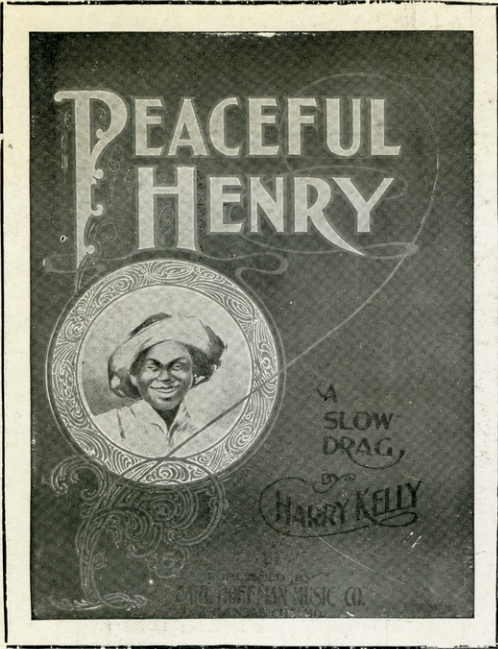
UNDER A PANAMA

WORDS BY VINCENT BRYAN
WHITNEY WARNER PUB CO

MUSIC BY J. B. MULLEN
DETROIT NEW-YORK



DICK GARDNER & GRACE LEONARD



Peaceful Henry

is the title of what we believe will be the next big instrumental HIT of this country. It is unique and original, as you will see by playing the excerpt below.

New Instrumental
...Numbers...

- SUNRISE IN GEORGIA, March
- CUBAN QUEENS, March-Two-Step
- THREE LITTLE MAIDS, Japanese Two-Step
- SOKO, Arabian Intermezzo

If this music is not obtainable of your dealer, we will mail it to you upon receipt of 25 cents each, except "SOKO," which is 30 cents.

The
WHITNEY-WARNER PUBLISHING COMPANY, Detroit, Michigan.

Send for Illustrated Catalogue - - F R E E

PEACEFUL HENRY.
(A Slow Drag.)

By E. H. KELLY.

Copyright Transferred by Carl Hoffman to Whitney Warner Publishing Co - 1903

SM 443

Under a Panama.

3

Words by VINCENT BRYAN

Music by J. B. MULLEN.

Moderato.

Piano introduction in 2/4 time, key of B-flat major. The piece starts with a forte (*ff*) dynamic and transitions to a mezzo-forte (*mf*) dynamic. The melody is in the right hand, and the bass line is in the left hand.

VOICE.

First vocal line with piano accompaniment. The lyrics are:
1. Lu - lu and Bill, by the light of the moon, Un! Un! they're
2. Lu says to Bill, "sing a sen - si - ble song, Of high so -

Second vocal line with piano accompaniment. The lyrics are:
woo - ing, Bill sings a song 'bout an Af - ri - can 'coon,
ci - e - ty, Liv - ing on love in a jun - gle is wrong,

Third vocal line with piano accompaniment. The lyrics are:
Troub - les are brew - ing. Bill says to Lu, "Think how
That's im - pro - pri - e - ty. If you want shade, get a

4

hap-py we'd be, Down by the Con - go, We'd live on love 'neath a
Pan-a - ma hat, Act like you're civ - i - lized. Liv - ing in trees aint as

bam - boo tree." Lu - lu re - plies "not me." For
good as a flat, Lu - lu is not for that." For

CHORUS.
Moderato.

I know — that mud - dy Con - go, — I'll row —

— no cheap can - oe, — My beau — must have an au - to,

A bright red au - to, that's built for two.

Bam - boos may shade a Zu - lu, In sun - ny Af - ri -

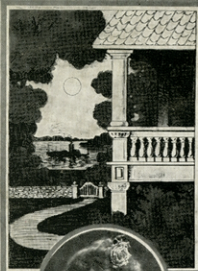
ca, No coon can win out Lu - lu, Un - less he's

un - der a Pan - a - ma. ma.

ff
D.C.

I WANTS A MAN LIKE ROMEO

WHITNEY
WARNER
PUB. CO.
DETROIT



WORDS BY
JAMES O'DEA
MUSIC BY
ROBT ADAMS



BELOW is the chorus of
what we term a refined
coon song. The verse is
very funny; written by
O'Dea and Adams. ♪ ♪

NEW SONGS

TO-NIGHT

LENORE, MY OWN LENORE

'TIS YOU I LOVE

MY DREAM LADY

If any of the Compositions ad-
vertised are not obtainable of
your Music Dealer, send 25c.
to

The

**WHITNEY-WARNER
PUBLISHING COM-
PANY,** Detroit, Michigan.

Illustrated Catalogue—FREE

I Wants A Man Like Romeo.

by O'Dea and Adams.

CHORUS.

rit. *allegro*

marked with em - phas - is. I wants a man like Ro - - nie
this is how I feel.

rit. *allegro*

o For to say sweet nothin's to me I

wants 'a man who'll climb a porch To reach my bai - - ce -

poco rit.

ny, I wants to cry out when in woe "Where-fore, art thou

poco rit.

Copyrighted 1902, by The Whitney-Warner Pub. Co., Detroit, Mich.

