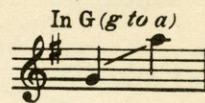
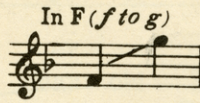
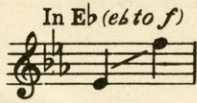
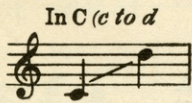


WHERE THE RIVER SHANNON FLOWS

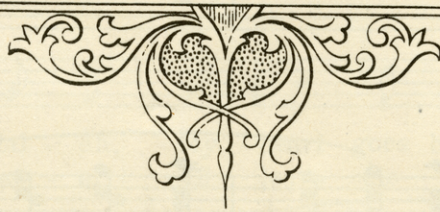


Duet

Soprano or
Tenor (*Melody*) (f to g)
and
Alto or
Baritone (a to bb)

In F

THE IRISH SWANEE RIVER



Lyric and Music

BY

JAMES I. RUSSELL

Published for the following Arrangements:

Vocal Solo, 4 Keys C-Eb-F-G... each	.50	Violin and Piano	.60
Vocal Duet, F	.60	Cello and Piano	.60
2 Part Treble (SA)	.15	Violin, Cello and Piano	.75
3 Part Treble (SSA)	.15	Vocal Orchestration, Eb	.75
4 Part Mixed (SATB)	.15	Small Orchestra (Waltz Medley)	.75
4 Part Male (TTBB)	.15	Full Orchestra (Waltz Medley)	1.15



STANDARD

WHEN PERFORMING THIS COMPOSITION KINDLY GIVE ALL
PROGRAM CREDITS TO

M. WITMARK & SONS

NEW YORK

PRINTED IN U. S. A.

5M686

Where The River Shannon Flows

Lyric and Music
JAMES J. RUSSELL

Andante

mf

This block contains the piano introduction. It features a treble and bass clef with a key signature of one flat (Bb) and a common time signature (C). The tempo is marked 'Andante' and the dynamic is 'mf'. The music consists of several measures of chords and moving lines in both hands.

p a tempo

There's a
Sure, no

rit. *p a tempo*

This block contains the first line of the song. It includes a vocal line and piano accompaniment. The tempo is 'p a tempo'. The lyrics are 'There's a Sure, no'. The piano part includes a 'rit.' (ritardando) marking.

pret - ty spot in Ire - land I al - ways claim for my land, Where the
let - ter I'll be mail - ing, For soon I will be sail - ing, And I'll

This block contains the second line of the song. It includes a vocal line and piano accompaniment. The lyrics are 'pret - ty spot in Ire - land I al - ways claim for my land, Where the let - ter I'll be mail - ing, For soon I will be sail - ing, And I'll'.

6407

M.W.&SONS 15042 - 3

Copyright MCMV by M. Witmark & Sons
Copyright Renewed

International Copyright Secured.

ALL RIGHTS RESERVED INCLUDING PUBLIC PERFORMANCE FOR PROFIT

Made in U. S. A.

The making of any unauthorized adaptation, arrangement or copy of this publication, or any part thereof, is an infringement of copyright and subjects the infringer to severe penalties under the Copyright Act.

CHORUS *Tenderly**mf a tempo*

Where dear old Shan-non's flow-ing, Where the three-leaved Sham-rock grows, Where my

heart is I am go-ing, To my lit-tle I-rish rose. And the

mo-ment that I meet her, With a hug and kiss I'll greet her, For there's

not a col-leen sweet-er, Where the Riv-er Shan-non flows.

dim. e rit.

FAMOUS IRISH SONGS

PRICE 50c Each

CHAUNCEY OLCOTT
& GEO. GRAFF Jr.
Valse moderato

When Irish Eyes Are Smiling

ERNEST R. BALL

When I-rish eyes are smi-ling,— Sure it's like a morn in spring.— In the lilt of
Copyright MCMXII by M. Witmark & Sons

With much expression

My Wild Irish Rose

CHAUNCEY OLCOTT

My wild I-rish rose,— The sweet-est flow'r that grows,— You may search ev-'ry-where, but
Copyright MDCCCXCIX by M. Witmark & Sons

RIDA JOHNSON YOUNG
Allegretto, ma espressivo

Mother Machree

CHAUNCEY OLCOTT
& ERNEST R. BALL

Sure, I love the dear sil-ver that shines in your hair And the brow that's all fur-rowed And
Copyright MCMX by M. Witmark & Sons

WILLIAM JEROME

That Old Irish Mother Of Mine

HARRY VON TILZER

With much feeling

In her eyes there's the dew of Kil-lar-ney,— On her cheek there's the rose of Kil-dare—
Copyright assigned MCMXXV to M. Witmark & Sons

J. KEIRN BRENNAN
Little slower

That's How The Shannon Flows

ERNEST R. BALL

Then o-ver to Gal-way it dan-ces a-long, And en-ters Lough Derg with a bit of a song, The
Copyright MCMXV by M. Witmark & Sons

JOSEPH M. WHITE

Bells Of Killarney

GEORGE J. TRINKAUS

With tender feeling

Shure those bells of Kil-lar-ney are call-ing to me, Like the voice of that loved one Sweet
Copyright MCMXXVII by M. Witmark & Sons

FISKE O'HARA
& J. KEIRN BRENNAN
With much expression

Ireland Is Ireland To Me

ERNEST R. BALL

Sure, my heart is in Ker-ry, in old Lon-don-der-ry, Kil-lar-ney, Kil-ken-ny and Clare—
Copyright MCMXV by M. Witmark & Sons

POPULAR VICTOR HERBERT MELODIES

PRICE 50c Each

HENRY BLOSSOM
Moderato

Eileen!
Alanna Asthore

Ei - leen! But my heart you have cap-tured 'Tis you that I love! You I a - dore!

poco rit.

Copyright MCMXVII by M. Witmark & Sons

B. G. DE SYLVIA

A Kiss In The Dark

Oh, that kiss in the dark Was to him just a lark, But to me 'twas a

Copyright MCMXXII by M. Witmark & Sons

HENRY BLOSSOM
Valse lente

Kiss Me Again

Sweet sum-mer breeze, whis-per-ing trees, Stars shin-ing soft - ly a - bove; — Ros - es in bloom

Copyright MCMXV by M. Witmark & Sons

GLEN MAC DONOUGH

Very slow and dreamily

Toyland

Toy-land! Toy-land! Lit-tle girl and boy-land, While you dwell with-in it — You are ev-er hap-py

Copyright MCMIII by M. Witmark & Sons

RIDA JOHNSON YOUNG

Andante

Ah! Sweet Mystery Of Life

Ah! sweet mys-ter-y of life, at last I found thee, Ah! I know at last the se-cret of it all; All the

Copyright MCMX. by M. Witmark & Sons

HENRY BLOSSOM

Tempo di marcia

The Irish Have A Great Day To-Night

'Tis a great day to - night for the I - rish. — For the cause we've fought for and died. —

Copyright MCMXVII by M. Witmark & Sons

HARRY B. SMITH

Allegro moderato e con maestà

Gypsy Jan

I give ye the tale of the Gyp-sy Jan, As was giv-en the tale to me. Ver-y few would fare to the

Copyright MDCCCXCVIII by M. Witmark & Sons

GLEN MAC DONOUGH

Tempo di Valse, lento *ten. rit.*

The Knot Of Blue

If you care for me as you say you do — Won't you wear for me just this

a tempo *ten. rit.*

Copyright MCMIV by M. Witmark & Sons

VICTOR HERBERT Song Albums Vol. 1 and 2 \$1.00 Each

Send for the Free VICTOR HERBERT Catalog

M. WITMARK & SONS

RCA BUILDING

NEW YORK