

MY HERO

"THE CHOCOLATE SOLDIER"

Music by
OSCAR STRAUS

Lyric by
STANISLAUS STANGE



Starring
**NELSON
EDDY**
Risë
STEVENS
with
**NIGEL BRUCE
FLORENCE BATES**

Directed by
ROY DEL RUTH
Produced by
VICTOR SAVILLE

PUBLISHED FOR THE
FOLLOWING ARRANGEMENTS

Solo, 2 Keys Bb - D	each	.50
Aria		1.00
Piano Solo (Gotham Classics No. 32)		.50
2 Part (SA)		.15
2 Part (TB)		.15
3 Part (SSA)		.15
3 Part (TBB)		.15
4 Part Mixed (SATB)		.16
4 Part Male (TTBB)		.16
Small Orchestra (Waltz)		.75
Full Orchestra (Waltz)		1.15
Concert Orchestra - Key D		.75
Band		.75
Standard Band -		
"A" Set		6.50
"B" Set		4.50
"C" Set		3.00
Full Score		3.00
Condensed Score		1.50
Extra Parts	each	.30

VOCAL SOLOS

My Hero (Aria)	1.00
My Hero (Song)	.50
The Chocolate Soldier	.50
The Letter Song	.50
That Would Be Lovely	.50
Sympathy	.50
What Can We Do Without A Man	.50
Tiralala (Romance)	.50
Never Was There Such A Lover	.50
Falling In Love	.50

VOCAL DUETS

The Chocolate Soldier	.60
The Letter Song	.60
That Would Be Lovely	.60
Sympathy	.60
My Hero	.60

PIANO SOLOS

Selections	1.00
Waltzes	1.00
March	.60
Intermezzo	.60
Lancers	.60
Piano Score	2.50
Full Vocal Score	5.00

WHEN PERFORMING THIS COMPOSITION KINDLY GIVE ALL
PROGRAM CREDITS TO

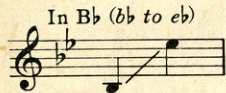
M. WITMARK & SONS
NEW YORK



MY HERO

McCleary

FROM
THE CHOCOLATE SOLDIER



DUET

In D



WORDS BY

STANISLAUS STANCE

MUSIC BY

OSCAR STRAUS

PUBLISHED FOR THE FOLLOWING ARRANGEMENTS:

Solo, 2 Keys B \flat -D	each	.50	3 Part (TBB)15	Symphonic Band—	
Duet, Key of D60	4 Part Mixed (SATB)16	“A” Set	6.50
Aria		1.00	4 Part Male (TTBB)16	“B” Set	4.50
Piano Solo (Gotham Classics No. 32)50	Small Orchestra (Waltz)75	“C” Set	3.00
2 Part (SA)15	Full Orchestra (Waltz)	1.15	Full Score	3.00
2 Part (TB)15	Concert Orchestra—Key of D75	Condensed Score	1.50
3 Part (SSA)15	Band75	Extra Parts	each .30



OPERATIC

WHEN PERFORMING THIS COMPOSITION KINDLY GIVE ALL
PROGRAM CREDITS TO

M. WITMARK & SONS

NEW YORK

Printed in U.S.A.

MILLER'S

MUSIC

STORE

245 S. MAIN STREET
BUTLER, PA.

SELECTED GERSHWIN FAVORITES

SONG TITLE	50c ea.	SHOW	SONG TITLE	50c ea.	SHOW	SONG TITLE	50c ea.	SHOW
Across The Sea		Scandals of 1922	The Jijibo		Sweet Little Devil	So Are You		Show Girl
Argentina		Scandals of 1922	Just To Know You Are Mine		A Dangerous Maid	Somebody From Somewhere		Delicious
At Half Past Seven		Nifties	Katinkitschka		Delicious	Somebody Loves Me		Scandals of 1924
Babbit And The Bromide, The		Funny Face	Kickin' The Clouds Away		Tell Me More	Somehow It Seldom Comes True		La La Lucille
Baby		Tell Me More	Kongo Kate		Scandals of 1924	Someone		For Goodness Sake
Beautiful Gypsy		Rosalie	K-r-azy For You		Treasure Girl	Someone Believes In You		Sweet Little Devil
Because Because		Of Thee I Sing	Let 'Em Eat Cake		Let 'Em Eat Cake	Someone To Watch Over Me		Oh Kay
Best Of Everything, The		La La Lucille	Let's Be Lonesome Together		Scandals of 1923	Some Rain Must Fall		A Dangerous Maid
Bidin' My Time		Girl Crazy	Let's Kiss And Make Up		Funny Face	Something About Love		Lady In Red
Blah Blah Blah		Delicious	Life Of A Rose		Scandals of 1923	Some Wonderful Sort Of Someone		Look Who's Here
Blue Blue Blue		Let 'Em Eat Cake	Limehouse Nights		Midnight Whirl	Song Of The Flame		Song Of The Flame
Boy Wanted		A Dangerous Maid	Little Jazz Bird		Lady Be Good	Songs Of Long Ago, The		Scandals of 1920
Boy What Love Has Done To Me		Girl Crazy	Liza (All Clouds 'll Roll Away)		Show Girl	Soon		Strike Up The Band
But Not For Me		Girl Crazy	Lo La Lo		Scandals of 1923	South Sea Isles		Scandals of 1921
By And By		Hayseed	Looking For A Boy		Tip Toes	So What		Pardon My English
Cinderelatives		Scandals of 1922	Lorelei		Pardon My English	Spanish Love		Broadway Brevities
Clap Yo' Hands		Oh Kay	Love Is Sweeping The Country		Of Thee I Sing	Strike Up The Band		Strike Up The Band
Come To The Moon		Capitol Revue	Love Of A Wife		La La Lucille	Sunshine Trail		Sunshine Trail
Cossack Love Song		Song Of The Flame	Luckiest Man In The World		Pardon My English	Swanee		Sinbad
Could You Use Me		Girl Crazy	Lu Lu		Broadway Brevities	Swanee Rose		Sweet And Low Down
Dance Alone With You		Funny Face	Mademoiselle In New Rochelle		Strike Up The Band	'S Wonderful		Funny Face
Dancing Shoes		A Dangerous Maid	Mah Jongg		Scandals of 1924	Tee-Oodle-Um-Bum-Bo		La La Lucille
Delicious		Delicious	Man I Love		Strike Up The Band	Tell Me More		Tell Me More
Dixie Rose		Sinbad	Maybe		Oh Kay	That American Boy Of Mine		The Dancing Girl
Do Do Do		The French Doll	Midnight Bells		Song Of The Flame	That Certain Feeling		Tip Toes
Do It Again		Show Girl	Military Dancing Drill		Strike Up The Band	That Lost Barber Shop		Americana
Do What You Do		Show Girl	Mine		Let 'Em Eat Cake	These Charming People		Tip Toes
Drifting Along With The Tide		Scandals of 1921	My Cousin In Milwaukee		Pardon My English	There Is Nothing Too Good For You		Scandals of 1923
Embraceable You		Girl Crazy	My Lady		Scandals of 1920	There's More To The Kiss Than The Sound		La La Lucille
Everybody Knows I Love Somebody		Rosalie	My Fair Lady		Tell Me More	Three Times A Day		Tell Me More
Fascinating Rhythm		Lady Be Good	My Log Cabin Home		The Perfect Fool	Throw Her In High		Scandals of 1923
Feeling I'm Falling		Treasure Girl	My One And Only		Funny Face	Tomale		For Goodness Sake
Feeling Sentimental		Show Girl	Nashville Nightingale		Nifties	Tra La La		Scandals of 1920
Fidgety Feet		Oh Kay	Nice Baby		Tip Toes	Tum On And Tiss Me		Scandals of 1924
From Now On		La La Lucille	Nightie Night		Tip Toes	Tune In (To Station J.O.Y.)		Scandals of 1924
Funny Face		Funny Face	Night Time In Araby		Scandals of 1924	Under A One Man Top		Sweet Little Devil
Got A Rainbow		Treasure Girl	Nobody But You		La La Lucille	Union Square		Let 'Em Eat Cake
Half Of It Dearly Blues, The		Lady Be Good	No One Else But That Girl Of Mine		Rosalie	Virginia Don't Go Too Far		Sweet Little Devil
Hangin' Around With You		Strike Up The Band	Oh Gee! Oh Joy!		Oh Kay	Vodka		Song Of The Flame
Hang On To Me		Lady Be Good	Oh! What She Hangs Out		Scandals of 1922	Waiting For The Sun To Come Out		Sweetheart Shop
Harlem Serenade		Show Girl	Of Thee I Sing		Of Thee I Sing	Walking Home With Angeline		Hayseed
Heaven On Earth		Oh Kay	Oh Kay		Oh Kay	We're Pals		Dere Mable
He Loves And She Loves		Funny Face	Oh Lady Be Good		Oh Lady Be Good	When Do We Dance		Tip Toes
Hey! Hey! Let 'Er Go		Sweet Little Devil	Old New England Home		Hayseed	Where East Meets West		Scandals of 1921
High Hat		Funny Face	On And On And On		Let 'Em Eat Cake	Where Is She		Scandals of 1923
How Long Has This Been Going On		Funny Face	On My Mind The Whole Night Long		Scandals of 1920	Where Is The Man Of My Dreams		Scandals of 1922
Idle Dreams		Scandals of 1920	On The Beach At How've You Been		Scandals of 1923	Where's The Boy, Here's The Girl		Treasure Girl
I Don't Think I'll Fall In Love Today		Treasure Girl	Oo How I Love To Be Loved By You		Ed Wynn's Carnival	Where You Go, I Go		Pardon My English
I Found A Four Leaf Clover		Scandals of 1922	Pepita		Sweet Little Devil	Who Cares		Of Thee I Sing
I Got Rhythm		Girl Crazy	Poppyland		Midnight Whirl	Why Do I Love You		Tell Me More
I'll Build A Stairway To Paradise		Scandals of 1922	Rosalie		Rosalie	Wintergreen For President		Of Thee I Sing
Illegitimate Daughter, The		Of Thee I Sing	Rose Of Madrid		Scandals of 1924	World Is Mine		Funny Face
I Love You		Scandals of 1921	Sam And Delilah		Girl Crazy	Yan-kee		Strike Up The Band
I Mean To Say		Strike Up The Band	Say So		Rosalie	Yankee Doodle Rhythm		Strike Up The Band
I Must Be Home By Twelve O'Clock Show Girl		Scandals of 1924	Scandal Walk		Scandals of 1920	You After Year		Scandals of 1924
I Need A Garden		Scandals of 1924	Seventeen And Twenty-One		Strike Up The Band	You And I (In Old Versailles)		Scandals of 1923
Innocent Ingenue Baby		Hayseed	She Hangs Out In Our Alley		Scandals of 1922	You Are You		Song Of The Flame
In The Mandarin's Orchard		Garden	She's Just A Baby		Scandals of 1921	You-OO Just You		Hitchy-Koo
Isn't It A Pity		Tip Toes	Show Me The Town		Oh Kay	You've Got What Gets Me		Girl Crazy
I'm Gonna Be A Sailor		Strike Up The Band	Signal, The		Song Of The Flame			
I'm So Young		Good Morning Judge	Simple Life		A Dangerous Maid			
I Won't Say I Will		Little Miss Bluebeard	Snowflakes		Broadway Brevities			
			So Am I		Lady Be Good			

Piano Selections of Popular Gershwin Shows

DANCING GIRL
FOR GOODNESS SAKE
FUNNY FACE
GIRL CRAZY
LADY BE GOOD
LA LA LUCILLE
LITTLE MISS BLUEBEARD

***1.00 ea.**

OF THEE I SING
OH KAY
RODALIE
SCANDALS OF 1921
SCANDALS OF 1922

SCANDALS OF 1923
SCANDALS OF 1924
SONG OF THE FLAME
STRIKE UP THE BAND
SWEET LITTLE DEVIL
TELL ME MORE
TIP TOES

A Song Folio of Gershwin Hits

This folio of George Gershwin's never to be forgotten works, with lyrics by his brother Ira, includes such favorites as "The Man I Love", "Fascinating Rhythm", "Oh, Lady Be Good", "Sweet And Low-Down", "That Certain Feeling", "So Am I", "Do-Do-Do", and others.

Price \$1.00

Vocal Scores

OF THEE I SING
STRIKE UP THE BAND

\$5.00 ea.

HARMS, INC. • ROCKEFELLER CENTER • NEW YORK, N. Y.

For
Com
a
Perf
"KAI FIDOPHONE"
.. Int
autho
scien
ture
and
many
compo
arrang

A
guide
discov
new r
of Me
Harm

Pric

M. W
AND
RCA B
NEW Y

SM 1480

MY HERO

Words by
STANISLAUS STANGE

from "The Chocolate Soldier"

Music by
OSCAR STRAUS

Andante con moto

ff

The piano introduction is in 6/8 time with a key signature of one sharp (F#). It features a melody in the right hand and a bass line in the left hand, both starting with a forte (ff) dynamic. The melody consists of eighth and quarter notes, while the bass line is primarily composed of quarter notes.

p

I have a true and no - ble lov - er, He is my sweet - heart,
It is my du - ty to bow be - fore thee, It is my du - ty

p

The first vocal entry is marked piano (p). The melody is in the right hand, and the piano accompaniment is in the left hand. The lyrics are: "I have a true and no - ble lov - er, He is my sweet - heart, It is my du - ty to bow be - fore thee, It is my du - ty".

all — my own, His like on earth who shall — dis - cov - er?
to love, a - dore thee! It is my du - ty to love thee ev - er,

The second vocal entry continues the melody. The lyrics are: "all — my own, His like on earth who shall — dis - cov - er? to love, a - dore thee! It is my du - ty to love thee ev - er,".

rit. *a tempo*

His heart is mine, and mine a - lone. We pled'd our troth each to — the oth - er,
To love thee ev - er, love thee ev - er.

rit. *a tempo*

The final vocal entry includes a ritardando (rit.) and a return to tempo (a tempo). The lyrics are: "His heart is mine, and mine a - lone. We pled'd our troth each to — the oth - er, To love thee ev - er, love thee ev - er.".



cresc.

And for our hap - pi - ness - I pray, Our lives be-long to one - an-oth - er,

cresc.

rit.

Oh hap-py, hap - py wed - ding day, Oh hap-py, hap - py wed - ding day.

rit.

Valse lento

p

Come! Come! I love you on - ly, My heart is true,

p sostenuto

cresc.

Come! Come! My life is lone - ly, I long for you, ———

cresc.

mf appassionato *f* *pp*

Come! Come! Naught can ef - face you, My arms are ach - ing now to em-

mf cresc. *f* *pp*

cresc. *f Broadly*

brace you. Thou art di - vine ——— Come! Come! I love you

cresc. allargando *f Broadly*

1.

on - ly, Come, he - ro mine. —

ff *dim.* *mf* *p*

2.

mine. —

p *fa tempo* *fz*

WARNING: Any person who shall willfully and for profit copy the words or music of this song, or any portion thereof, shall be liable to criminal prosecution under the United States Copyright Law.

Alice Koffert
2591 502

VOCAL SCORES OF FAMOUS PRODUCTIONS

ADELE (R)	Briguet-Phillip-Herve	MAID AND THE MUMMY (W)	Bowers
ALASKAN, THE (W)	Girard-Blethen	MLE. MODISTE (W)	Herbert
ALL OVER TOWN (H)	Hein	MLE. NAPOLEON (W)	Luders
AMEER, THE (W)	Herbert	MAN FROM CHINA (W)	Bratton
ANGEL FACE (H)	Herbert	MARCELLE (W)	Luders
ANYTHING GOES (H)	Porter	MARY'S LAMB (W)	Carle
APPLE BLOSSOMS (H)	Jacoby-Kreisler	MAYOR OF TOKIO (W)	Peters
BABES IN TOYLAND (W)	Herbert	MELODY (H)	Romberg
BABETTE (W)	Herbert	MERRY MOUNT (H)	Hanson
BARON TRENCK (R)	Rubyn-Blossom	MISS DOLLY DOLLARS (W)	Herbert
BEAUTY SPOT (H)	Weston-Barnes-Gifford-Hein	MOTOR GIRL (W)	Edwards
BELLE OF BRITTANY (H)	Talbot	MR. PICKWICK (W)	Klein
BELLE OF MAYFAIR (H)	Stuart	MY HOME TOWN GIRL (W)	Hirsch
BELLE OF NEW YORK (H)	Kerker	NAUGHTY MARIETTA (W)	Herbert
BITTER SWEET (H)	Coward	NEW MOON (H)	Romberg
BOW SING (W)	Klein	NINA ROSA (H)	Romberg
BRIGHT EYES (W)	Hoschna	NO, NO, NANETTE (H)	Youmans
BROKEN IDOL (R)	Van Alstyne	OF THEE I SING (H)	Gershwin
BURGOMASTER (W)	Luders	OLD DUTCH (W)	Herbert
CALIFORNIA (R)	Bowers	ONLY GIRL (W)	Herbert
CAMPUS (W)	DeLeon	ORANGE BLOSSOMS (W)	Herbert
CHAPERONS, THE (W)	Witmark	PARSIFAL (H)	Wagner
CHILDREN OF DREAMS (H)	Romberg	PATRIOTS (W)	Edwards
CHINA DOLL, THE (W)	Smith-Aarons	PEARL AND THE PUMPKIN (W)	Bratton
CHOCOLATE SOLDIER (W)	Straus	PIED PIPER (W)	Klein
CYRANO DE BERGERAC (W)	Herbert	POM POM (H)	Felix
DESERT SONG (H)	Romberg	PRETENDERS (W)	Clark
DOLLY VARDEN (W)	Stange-Edwards	PRIMA DONNA (W)	Herbert
DONNA JUANITA (H)	Von Suppe	PRINCESS BEGGAR (W)	Robyn
DR. DE LUXE (W)	Hoschna	PRINCESS CAPRICE (H)	Fall
DUCHESS (W)	Herbert	PRINCESS CHIC (W)	Edwards
EILEEN (W)	Herbert	PRINCESS PAT (W)	Herbert
ENCHANTRESS (W)	Herbert	PRINCE OF PILSEN (W)	Luders
EXPLORERS (W)	Lewis	PURPLE ROAD (H)	Reinhardt-Peters
FAIR CO-ED (W)	Luders	RAINBOW GIRL (W)	Hirsch
FANTANA (W)	Hubbell	RAMBLER ROSE (H)	Jacobi
FIDDLERS THREE (W)	Johnstone	RED MILL (W)	Herbert
FILIBUSTER (W)	Loraine	RED ROSE (R)	Bowers-Smith
FLORODORA (H)	Stuart	RED WIDOW (W)	Gubst
FORBIDDEN LAND (W)	Steely-Chapin	ROLICKING GIRL (W)	Francis
FORTUNE TELLER (W)	Herbert	ROSE-MARIE (H)	Friml
GAY MUSICIAN (W)	Edwards	ROSE OF ALGERIA (W)	Herbert
GIRL AND THE GOVERNOR (W)	Edwards	ROSE OF ALHAMBRA (H)	Hosmer
GIRL AND THE KAISER (H)	Jarno	ROYAL VAGABOND (W)	Goetzl
GIRL IN THE TRAIN (W)	Fall	SHO GUN (W)	Luders
GIRL OF MY DREAMS (W)	Hoschna	SINGING GIRL (W)	Herbert
GOING UP (W)	Hirsch	SOCIAL WHIRL (H)	Kerker
GRAND MOGUL (W)	Luders	SOUL KISS (W)	Levi
HALF MOON (H)	Jacoby	STORKS (W)	Steely-Chapin
HEART BREAKERS (W)	Edwards	STRIKE UP THE BAND (H)	Gershwin
HER LITTLE HIGHNESS (R)	DeKoven	STUDENT PRINCE (H)	Romberg
HER REGIMENT (H)	Herbert	TAKE IT FROM ME (W)	Anderson
HIS HONOR THE MAYOR (W)	Edwards	TATTOOED MAN (W)	Herbert
IN THE BARRACKS (R)	Bowers	THREE TWINS (W)	Hoschna
IN THE PASHA'S GARDEN (H)	Seymour	TOURISTS (H)	Kerker
IT HAPPENED IN NOORDLAND (W)	Herbert	VELVET LADY (W)	Herbert
JOLLY MUSKETEERS (W)	Stange-Edwards	VICEROY (W)	Herbert
KATY DID (W)	Hoschna	WALTZ DREAM (H)	Strauss
KING DODO (W)	Luders	WEDDING TRIP (R)	DeKoven
LADY OF THE SLIPPER (W)	Herbert	WHEN JOHNNY COMES MARCHING HOME (W)	Stange-Edwards
LEONARDO (H)	Thorne	WHEN SWEET SIXTEEN (W)	Herbert
LITTLE BOY BLUE (R)	Edwards-Madden	WOODLAND (W)	Luders
LONELY ROMEO (R)	Franklin-Bowers	WONDERLAND (W)	Herbert
LOVE'S LOTTERY (W)	Stange-Edwards	YANKEE CONSUL (W)	Robyn
LOVE WALTZ (W)	Lasky-Berton	YANKEE TOURIST (W)	Robyn
MADAME SHERRY (W)	Hoschna		

Price \$5.00 each
(EXCEPT CANADA)

MUSIC PUBLISHERS HOLDING CORPORATION
M. WITMARK & SONS • HARMS, INC. • REMICK MUSIC CORP.
RCA Building, New York, N. Y.