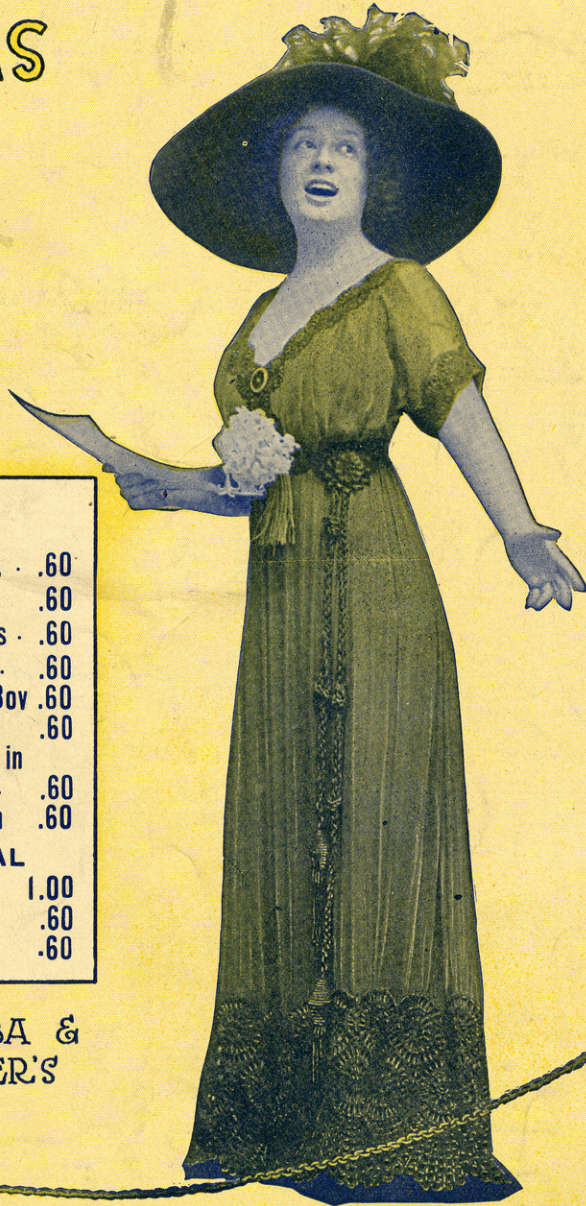


NORA BAYES AND JACK NORWORTH'S SONGS



VOCAL

- | | |
|--|-----|
| †Mr. Moon-Man | |
| Turn off Your Light, | .60 |
| Strawberries | .60 |
| For Months and Months | .60 |
| There is a Happy Land | .60 |
| Please go Find my Billy Boy | .60 |
| Parlor Games | .60 |
| The Only bit of Ireland in
Old New York | .60 |
| I've a Garden in Sweden | .60 |

INSTRUMENTAL

- | | |
|-------------|------|
| Selection | 1.00 |
| Waltz | .60 |
| Turkey Trot | .60 |

IN LOUIS F. WERBA &
MARK A. LUESCHER'S
PRODUCTION OF

"LITTLE MISS FIX-IT"

BY W. J. HURLBUT & HARRY B. SMITH

The Standard
Engraving Co.
N.Y.

THE NORWORTH PUB. CO.
1431 B'WAY N.Y.

SM 1639

² Mister Moon-Man Turn Off The Light.

By Nora Bayes and Jack Norworth.

Marcia.

Piano

The piano introduction is in 2/4 time with a key signature of one sharp (F#). It begins with a melody in the right hand and a bass line in the left hand. The first measure is marked *mf*. The piece concludes with a *cresc.* (crescendo) marking and a final chord.

When the moon is shin - ing yel - low,
All you lads and lit - tle miss - es,

The first system of the song features a vocal line and piano accompaniment. The piano part is marked *mp*. The lyrics are: "When the moon is shin - ing yel - low, All you lads and lit - tle miss - es,"

And a girl - ie with her fel - low,
Like to have your hugs and kiss - es,

The second system continues the vocal and piano accompaniment. The lyrics are: "And a girl - ie with her fel - low, Like to have your hugs and kiss - es,"

Both are get - ting nice and mel - low, In the
But re - mem - ber half the bliss is, When it's

The third system concludes the vocal and piano accompaniment. The lyrics are: "Both are get - ting nice and mel - low, In the But re - mem - ber half the bliss is, When it's"

bright dark as moon it can light. be.

cresc.

Then the light-man will dis - cov - er,
If once more I start my plead - ing,

Sweet-hearts keep-ing un - der cov - er,
Tell him dark-ness we are need - ing, In

Soon he hears that girl and is lov - er Say to
case my plead - ing he is heed - ing, You must

him, "Put out that light"
do the same as we.

Chorus.

Turn off your light, Mis - ter Moon - Man, Go and hide your

mf-f

face be - hind a cloud; Can't you see that we want to

spoon, Man, Two is com - pa - ny and three's a crowd

I'll take my la - dy to a shad - y place where I can

hug my ba - by, And we'll say to you, "Good - night," "Good - night!" We

want to tease and squeeze, if you please, Mis - ter Moon - Man

turn off the light. light.

1 2

8va

TRY THESE OVER ON YOUR PIANO

In Roseland.

INTERMEZZO PETITE

Andante moderato.

by MAX. G. SUOENE

Piano



Copyright MCMIV by T.S. Sarma Co.
English Copyright Secured

FOR SALE WHEREVER MUSIC IS SOLD