

# Piano Man

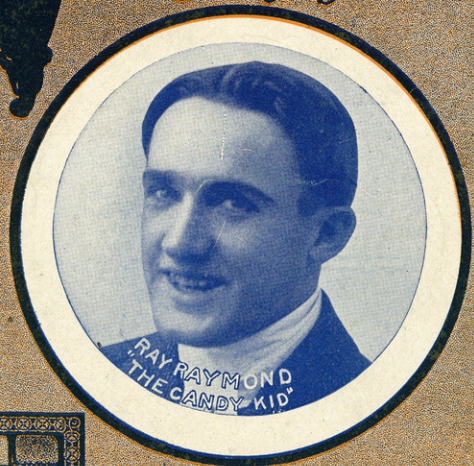


*From*

*Sung by*

*by*

**BERLIN  
AND  
SNYDER**



5

**TED SNYDER Co.**  
MUSIC PUBLISHERS  
112 WEST 36 ST. NEW YORK.

SM 1665

2

# Piano Man.

By Berlin and Snyder.

Moderato.

The piano introduction consists of two staves. The right hand plays a series of chords and single notes in a steady, moderate tempo. The left hand provides a simple harmonic accompaniment with chords and single notes.

*Till Ready.*

The vocal line begins with the lyrics: "You all have your fa - vor - ite / You've list - ened to Ver - di's". The piano accompaniment features a rhythmic pattern of eighth notes in the right hand and chords in the left hand.

mas - ters, — The kind what mus - ic give; — Did you  
mus - ic, — Be - thov - en's clas - sy tune; — I'm at -

The piano accompaniment continues with chords and single notes, supporting the vocal line.

ev - er, ev - er meet my 'lov - in' pian - o man, — As a  
lud - din' to the fel - lows with the hair as long, — As a

The piano accompaniment continues with chords and single notes, supporting the vocal line.

No? then you've yet to live. He sits on his stool like a  
rain - y - aft - er noon. They all need - ed love to in -

king on the throne, And plays and plays with ease, Why the  
spire their notes, Be it the spring or fall, But my

mel - o - dy just nes - tles in his fing - er tips And  
pian - o man, just have him meet a pian - o grand Then

ooz - es out in the keys. Pi -  
lis - ten, Umm, Umm, that's all.

## Chorus.

*2nd time 8va*

an - o man, Pi - an - o man, He brings forth notes like

*p-f*

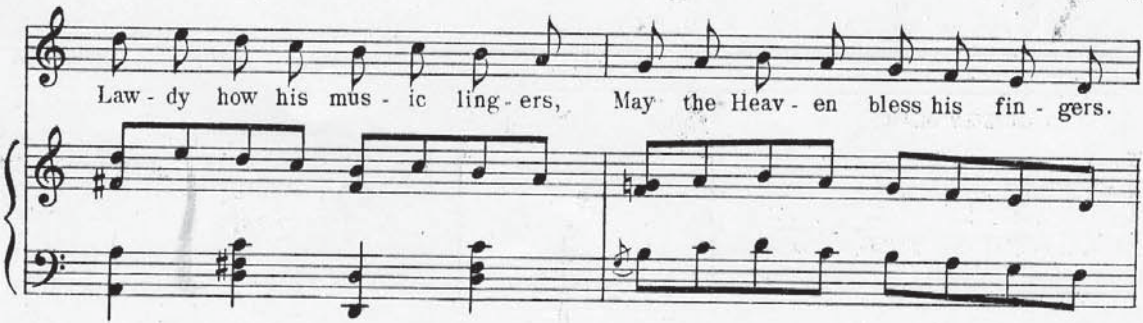
no one can, — Oh what a feel - in' When his

*R. H.*

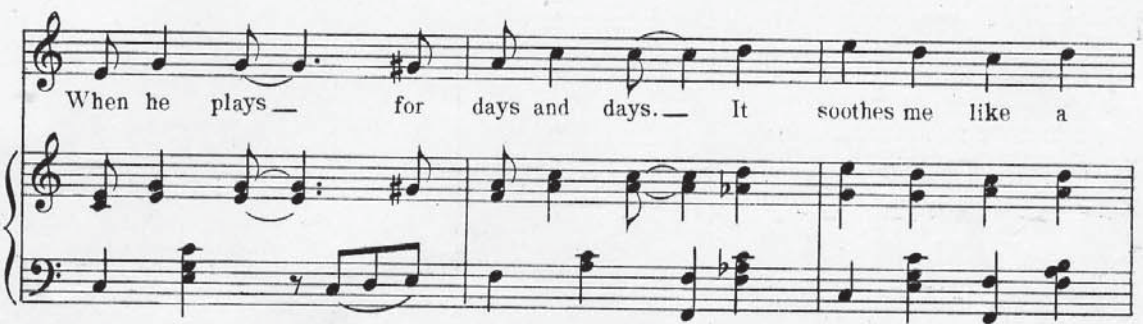
notes come a steal - in' why I just feel like kneel - in' and ap -

peal - in' to my Pi - an - o man, Pi - an - o man,

Law - dy how his mus - ic ling - ers, May the Heav - en bless his fin - gers.

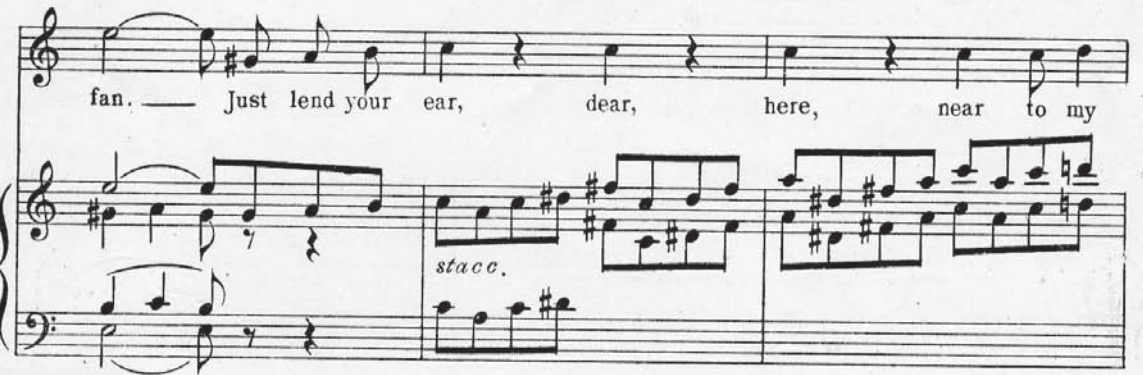


When he plays — for days and days. — It soothes me like a



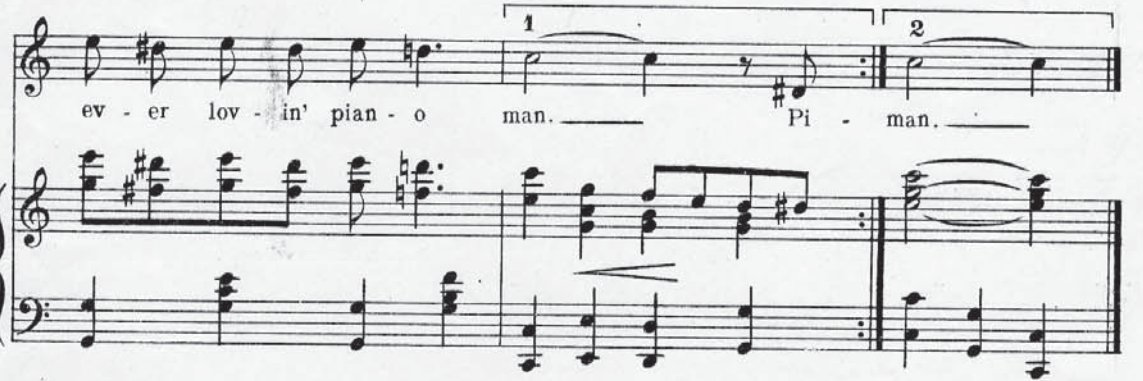
fan. — Just lend your ear, dear, here, near to my

*stacc.*



ev - er lov - in' pian - o man. — Pi - man. —

1 2



# TWO NEW SONG SUCCESSSES

## GRIZZLY BEAR

Words by  
IRVING BERLIN

MUSIC BY  
GEORGE BOTSFORD

CHORUS

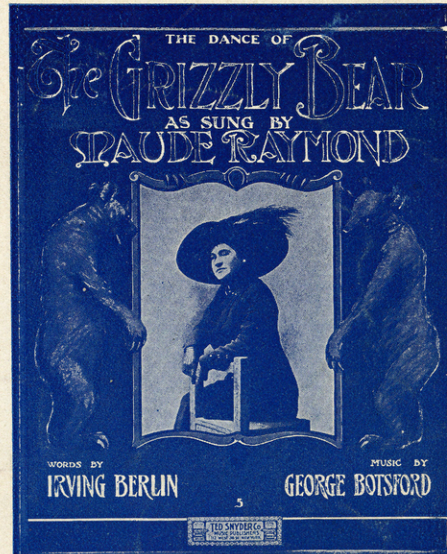
Dance of this gra - dy Bear Hug up close to your  
 on with you gra - dy Bear Hug up close to your

be - by, Throw your shoulders back the out - in! Low - dy, Low - dy, what a feel - in!  
 be - by, Hip - no time me like a wis - erd, Shake yo - self just like a mis - terd,

Sing up close to your in - dy, Close your eyes and do some rap - py,  
 Sing up close to your in - dy, If they do that dance in bal - ay,

Some - thing new is 'twine to hap - pen, Hug up close - to your  
 Shout me 'bout to night at sev - en, Hug up close - to your

Write for  
Beautifully  
Illustrated  
Catalogue  
**FREE**



## WHEN YOU PLAY THAT PIANO, BILL!

Words by  
IRVING BERLIN

MUSIC BY  
TED SNYDER

CHORUS

When I hear you play that pia - no so sweet, My  
 blood runs cold way down to my feet, You sure do bring forth

me - a - like, Like I nev - er heard, - be - fore, When you  
 start in tear - ing rag by the streets, I could hear you play that

For sale by  
all leading  
dealers of  
up-to-date  
**MUSIC**



## TED SNYDER CO.

112 WEST 38th STREET, NEW YORK CITY

