

POPULAR EDITION

ROBERT LILEY
Robert Liley

WHO ARE YOU WITH TO-NIGHT?



By
**WILLIAMS &
 VAN ALSTYNE**



JEROME H. REMICK & CO.
 NEW YORK - DETROIT.

5



Ask Your Dealer for **JEROME H. REMICK & CO'S.** Latest Publications

New Song Hits

My Hula-Hula Love
 You'll Do the Same Thing Over Again
 Give Back the Kiss I Gave You
 My Only One
 Down In the Old Meadow Lane
 In the Summertime
 Texas
 Harbor of Love
 I'd Love to Love a Girl Like You
 Just a Year Ago
 Where Are the Roses of Yesterday
 A Very Ambitious Girl
 I'd Rather Love What I Cannot Have
 Than Have What I Cannot Love
 My Irish Dearie
 When My Dark Diana Dreams of Me
 Casey
 Naughty, Naughty, Naughty
 Just a Chain of Daisies
 All Good American Names
 Who Are You With Tonight
 On Mobile Bay
 We've Kept the Golden Rule
 Silver Bell
 Sweet Red Roses
 Love Dreams
 Daisies Won't Tell
 I'm Afraid of You
 Sugar Moon
 Garden of Roses
 The Vale of Dreams
 King Chanticleer
 Maybe You're Not the Only One
 Who Loves Me

Performing rights reserved
My Only One

Words by
WILLIAM W. PARQUET

Music by
HENRIETTE BLANKE-BELCHER

Andante espressivo

The rose that blows be-neath the blue, My on - ly one! Is
 Tho rob - in's song that swells on high, My on - ly one! Will

not so sweet nor pure as you, My on - ly one! Its
 oft' be heard, but soon must die, My on - ly one! But

Copyright MCMXXI by JEROME H. REMICK & CO. New York & Detroit
 Copyright, Canada, MCMXXI by Jerome H. Remick & Co.
 Propiedad para la Republica Mexicana de Jerome H. Remick & Co. New York y Detroit. Depositada conforme a la ley

Instrumental Hits

The Whirlwind
 Del Rose Waltzes
 Borneo Rag
 Hula-Hula Intermezzo
 Royal Flush
 The Aviator
 Anoma
 Chatter-Box-Rag
 Rig-a-ma-role-Rag
 Polaire Waltzes
 Maxine Waltzes
 Chanticleer-Rag
 Southern Symphony
 Silver Bell
 The Georgia Rag
 Cupid's Patrol
 Woodland Dove
 The Sea Shell
 Crocus
 Daughters of the American Revolution
 Dorothy Waltz
 Garden of Dreams Waltz
 Honey Rag
 Indian Summer
 Love's Serenade
 Mop Rag
 Poker Rag
 Black and White
 Easter Lillies
 Azure Skies
 Zamora Waltz
 Happy Days Waltz
 Fire-fly
 Twilight Serenade

Write for Illustrated
 Catalogue

JEROME H. REMICK & CO.
 MUSIC PUBLISHERS
 DETROIT NEW YORK

Always
 Good

Who Are You With To-Night?

Words by
HARRY WILLIAMS

Music by
EGBERT VAN ALSTYNE

Marcia

The piano introduction consists of two staves. The right hand starts with a treble clef, a key signature of two flats (B-flat and E-flat), and a 6/8 time signature. It begins with a forte (f) dynamic and features a series of chords and eighth-note patterns. The left hand starts with a bass clef and provides a steady accompaniment of eighth notes.

The piano accompaniment for the first vocal line consists of two staves. The right hand has a treble clef and the left hand has a bass clef. The music continues with chords and rhythmic patterns, including a section marked with a first ending bracket and the numbers '1 Bill' and '2 One'.

The first verse of the song is presented with a vocal line on a treble clef staff and piano accompaniment on two staves (treble and bass clefs). The lyrics are: "Boun-der was 'a roun-der, just as round as he could be, — He night he phoned his wife that bus'-ness kept him down you see, — Then".

The second verse of the song is presented with a vocal line on a treble clef staff and piano accompaniment on two staves (treble and bass clefs). The lyrics are: "round-ed all a - round the town with all the girls hed see, — At in a pri - vate din - ner room, as com. fy as could be, — With".

Copyright MCMX by JEROME H. REMICK & Co. New York - Detroit

Copyright, Canada, MCMX by Jerome H. Remick & Co.

Propiedad para la Republica Mexicana de Jerome H. Remick & Co. New York y Detroit. Depositada conforme a la ley.

lunch-eon he had Gen - e - vieve, at din - ner he had Flo', ——— And
such a lit - tle queen he sat, till thro' the op - en door ——— He

then he had some - bod - y else each ev'. ning at the show, A
heard a voice, a voice he knew, that he had heard be - fore, His

young soubrette but old co-quette said: "I re-mem-ber you, ——— I've
wif - ey took a sin-gle look then took him by the ear, ——— To

Spoken

seen you out with Man - die and I've seen you out with Sue, But
lead him home, no more to roam and shout - ed: "Sir, look here!

Who are you with to night ?

CHORUS

1-2 Who are you with to - night, to - night? Oh! Who are you with to - night? —

Who is the dream-y peach and cream-y vi-sion of sweet de - light? —

is it your lit - tle sis - ter, Mis - ter? Answer me hon - or bright, Will you

tell your wife in the morn - ing who you were with to - night?" night?"
tell the judge in the morn - ing who you were with to - night?" night?"

Who are you with to night 3



ASK YOUR
DEALER FOR
**JEROME H
REMICK &
CO'S**
LATEST
PUBLICATIONS

SONGS

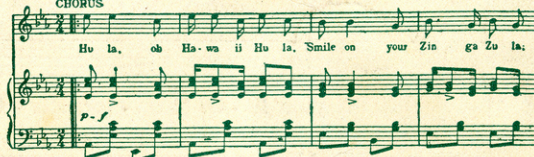
Now She's Anybody's
Girlie
Please Come Back To
Me
O-O-Ohio
Shame Upon You,
Nancy
Sugar Moon
Honolulu Rag
Oh, You Dream
The Vale of Dreams
Love Dreams
Maybe You're Not the
Only One That Loves
Me
Curly Head
Sweet Red Roses
The Song of the Open
Sea
Any Place is Heaven
When You're With
the Girl You Love
Silver Bell
What is the World
Without You
I'm Just Pinin' for You
Cavalier Rustican' Rag
He Got Right Up On
the Wagon
Chanticleer Rag, song
Tickle Toes
Cowboy
Honka-Tonk Rag
I'd Like to Tell Your
Fortune, Dearie
Winter
The Vale of Dreams
Alamo Rag
On Mobile Bay

INSTRUMENTAL

A Southern Symphony
Dance of the Whip-
poor-will
Mrs. Murphy
Miami
Cupid Patrol
Rigmarole Rag
The Georgia Rag
The Sea Shell
Haytian Rag
Egyptian Rag
Tattered Melody Rag
Happy Nights
Garden of Dream
Waltz
Maxine Waltzes
Chanticleer Rag
Easter Lillies
Frog's Frolic
Hyacinth
Mr. Rooster
Nervous Rag
Polaire Waltzes
Universal Peace
Chatterbox Rag
Little Donald Two-
Step
Stewed Prunes
The Boston Waltz
Silver Bell
Garden of Roses

My Hala Hala Love

Words by EDWARD MADDEN
CHORUS
Music by PERCY WENRICH



Copyright MCMXI by JEROME H. REMICK & Co., New York & Detroit
Copyright, Canada, MCMXI by Jerome H. Remick & Co.
Propiedad para la Republica Mexicana de Jerome H. Remick & Co., New York y Detroit. Depositada conforme a la ley.

WRITE FOR ILLUSTRATED CATALOGUE

JEROME H. REMICK & CO. NEW YORK
PROPRIETORS OF THE
WHITNEY-WARNER PUB. CO. DETROIT MICH.

ASK YOUR DEALER