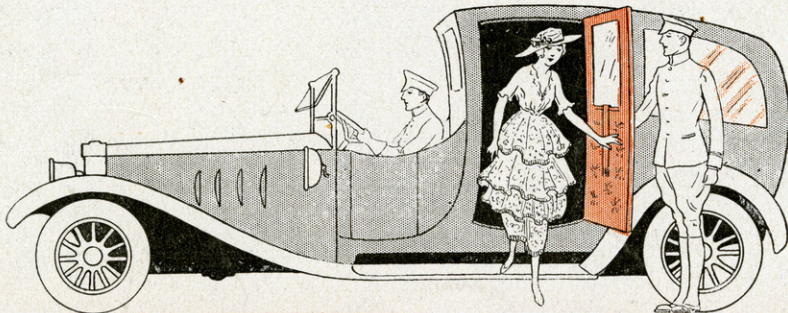


In The Land Of Yesterday

LEW FIELDS
Presents

The POOR LITTLE RITZ GIRL



An
Original
Musical
Novelty

Staged by
Ned
Wayburn

Lyrics by
Alex
Gerber

I LOVE TO SAY HELLO TO THE GIRLS, BUT I HATE TO SAY GOOD BY	60
IN THE LAND OF YESTERDAY	60
PRETTY MING TOY	60
THE BOMBAY BOMBASHAY	60
WHEN I FOUND YOU	60
SELECTION	1.00

Music by
Sigmund
Romberg

Theatrical and Music Hall Rights of these Songs are fully
protected by Copyright and MUST NOT be used for pub-
lic performances without permission.

M. Witmark & Sons
New York



2 SM 4718

In The Land Of Yesterday

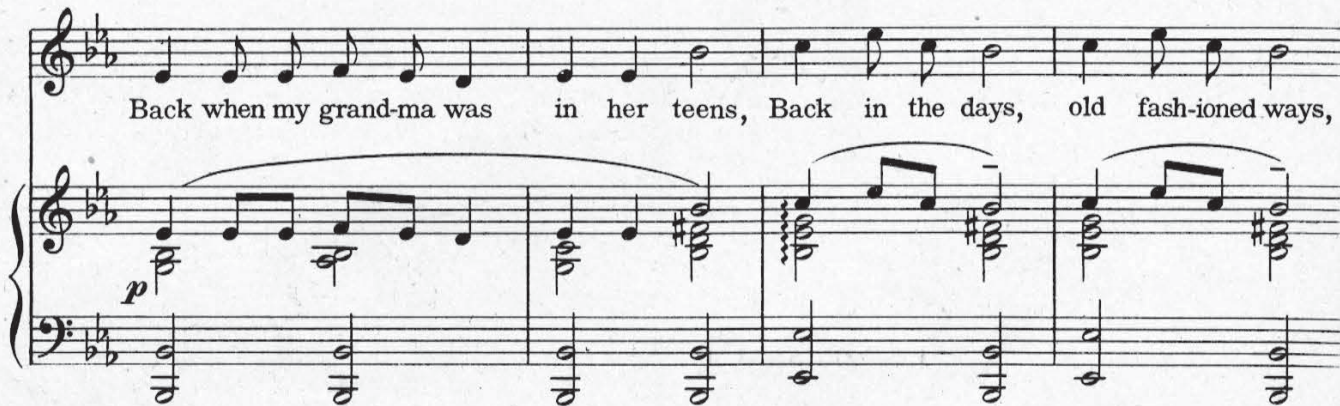
Lyric by
ALEX GERBER

Music by
SIGMUND ROMBERG

Moderato with expression



Piano introduction in B-flat major, 2/4 time. The piece begins with a forte (*f*) dynamic and concludes with a fortissimo (*ff*) dynamic. The melody is primarily in the right hand, with a supporting bass line in the left hand.



Back when my grand-ma was in her teens, Back in the days, old fash-ioned ways,

Accompanying piano accompaniment for the first vocal line, starting with a piano (*p*) dynamic.



She would re-late to me by-gone scenes Of old-en days and gold-en ways.

Accompanying piano accompaniment for the second vocal line.



Oft in her arms she would hold me, This pret-ty stor-y she told me:

Accompanying piano accompaniment for the third vocal line, ending with a *rit.* (ritardando) marking.

GET SO FOR TALI MAC AN PLAY PIA

REFRAIN *Very slow*

In beau-ti-ful Land of Yes-ter-day, * land of i-deals,

p-f

This system contains the first two lines of the refrain. The vocal line is in 4/4 time with a key signature of two flats. The piano accompaniment features a steady bass line and chords in the right hand, with a *p-f* dynamic marking. The first measure of the piano part includes a fermata over a chord.

Where las-sies would pass their time a-way at spin-ning wheels,

This system contains the next two lines of the refrain. The piano accompaniment continues with similar harmonic support, including a fermata in the right hand.

That's when they had no silk lin-ger-ie, The gowns then were not so neg-li-gee,

This system contains the next two lines of the refrain. The piano accompaniment includes a *p* dynamic marking in the right hand.

They dressed in a real old fash-ioned way;

8

This system contains the final line of the refrain. The piano accompaniment features a more active right hand with eighth-note patterns and a fermata over the final chord, marked with an '8'.

They al-ways would dance the Min-u-et, so quaint and neat,

And al-ways would sing a love du-et, so nice and sweet, The folks were so

qui-et and a-toned, No girl ev-er had a chap-e-rone, Back in the

sweet Yes - ter - day. day.

The Little Church Around the Corner

Lyric by
ALEX. GERBER

CHORUS (*Slower*)

Ding, Dong, Ding, I warn yer 'bout the church 'round the cor-ner;

(SOPHIE)

That's where I will take you, and make you my wife. I'll be a

(ADAMS)

sim-ple bride and blush, no doubt. Have you some-thing to

blush a-bout? Then I will be a "gon-ner," When we

Copyright MCMXIX by M. Witmark & Sons

DOWN BY THE NILE

Lyric by
FREDERIC A. KUMMER

CHORUS

Down by the Nile the night is fall-ing,

Heart of my heart, to you I'm call-ing,

Tem-ple bells so sweet-ly ring, Mem-o-ries of

you they bring A-ges a-go I loved you,

Copyright MCMXIX by M. Witmark & Sons

GIANINA

Lyric by
FREDERIC A. KUMMER

CHORUS (*slower and with much expression*)

eyes shall be my stars. Thy dear smile shall be my sun, Gia

ni-na, I a-dore thee, Thy sweet

kiss es be my wine, And thy heart my store of gold, Gia-

ni-na, my be-loved, I a-dore thee Should

Copyright MCMXIX by M. Witmark & Sons

ONCE UPON A TIME

Lyric by
FREDERIC A. KUMMER

REFRAIN

Once up-on a time in May, How can I for-get,

dear? All the world seemed bright and gay, On that day we

met When I heard that mag-ic song, All my

dream came true, And ev-ry voice with-in me cried:

Copyright MCMXIX by M. Witmark & Sons