

# The Leg of Nation's

*F. Ziegfeld Jr., Presents*

# Ziegfeld Follies of 1920

*By*

**IRVING BERLIN**

*Staged by*  
**Edward Royce**



- The Girls of My Dreams . . . . .60
- The Syncopated Vamp . . . . .60
- Tell Me Little Gypsy . . . . .60
- Chinese Firecrackers . . . . .60
- Bells . . . . .60
- I Live In Turkey . . . . .60
- The Leg of Nation's . . . . .60
- Come Along . . . . .60

PRICE 60¢

RS,

**Irving Berlin, Inc.**  
 Music Publishers  
 1587 Broadway  
 New York



SM 4750

# Leg Of Nations

By IRVING BERLIN

Moderato con moto

ff

The piano introduction consists of two staves. The right hand features a complex, rhythmic melody with many beamed sixteenth notes and chords, while the left hand provides a steady bass line with quarter notes and chords. The music is in 2/4 time and the key signature has one sharp (F#).

VOICE

I'd like to form a League of Na - tions\_ With - out an - y ob - li -

mp

The vocal line is on a single staff in treble clef. The piano accompaniment is on two staves. The piano part features a melody in the right hand and a bass line in the left hand, with some chords and rests. The dynamics are marked 'mp'.

ga - tions Com - posed of girls, and each a beau - ti - ful one \_\_\_\_\_

The vocal line continues on a single staff. The piano accompaniment continues on two staves, with the right hand playing chords and the left hand playing a bass line. The lyrics end with a long underline.

'Twould be a ver - y nov - el treat - y Rep - re - sen - ted by a

The vocal line continues on a single staff. The piano accompaniment continues on two staves, with the right hand playing chords and the left hand playing a bass line.

Arr. by Albert Moquin

Copyright MCMXX by IRVING BERLIN Inc., 1587 B'way, N.Y.  
International Copyright Secured All Rights Reserved

sweet - ie From each and ev - 'ry coun - try un - der the sun

Don't think I'm ask - ing for your kind ap - plause

*marcato*

But I think a Yank - ee girl should be it's pres - i - dent Be - cause

## CHORUS

Her eyes are a lit - tle bit bright - er Her teeth

*mp-f*

— are a lit-tle bit whit - er — She's just a bit more live-ly which

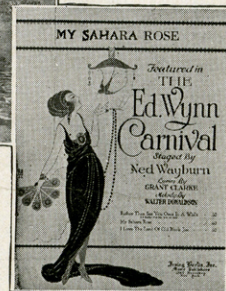
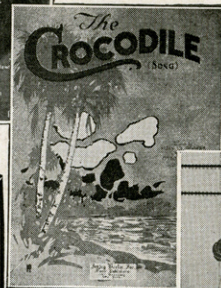
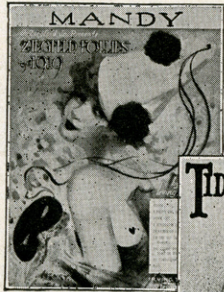
makes her more at - trac-tive The rest are not as ac-tive At a part-y or ball

— Her smile — is a lit-tle bit sweet-er — Her style —

— is a lit-tle bit neat - er — And from her toes up to her knees The

an-kle ga-zer sees she's Got the leg of Na-tions My Girl of the U. S. A. A. —

# HITS FROM THE IRVING BERLIN CATALOG



**F**OR SALE WHEREVER  
MUSIC IS SOLD—ALSO  
OBTAINABLE FOR ALL  
MAKES OF TALKING  
MACHINES AND PLAYER  
PIANOS.

**I**F YOUR DEALER CANNOT  
SUPPLY THESE COPIES, WE  
SHALL BE PLEASED TO FOR-  
WARD SAME TO YOU UPON  
RECEIPT OF 40c. PER COPY.