

STEIN SONG

(UNIVERSITY OF MAINE)

A New Arrangement by **RUDY VALLÉE**

for
VOICE AND PIANO

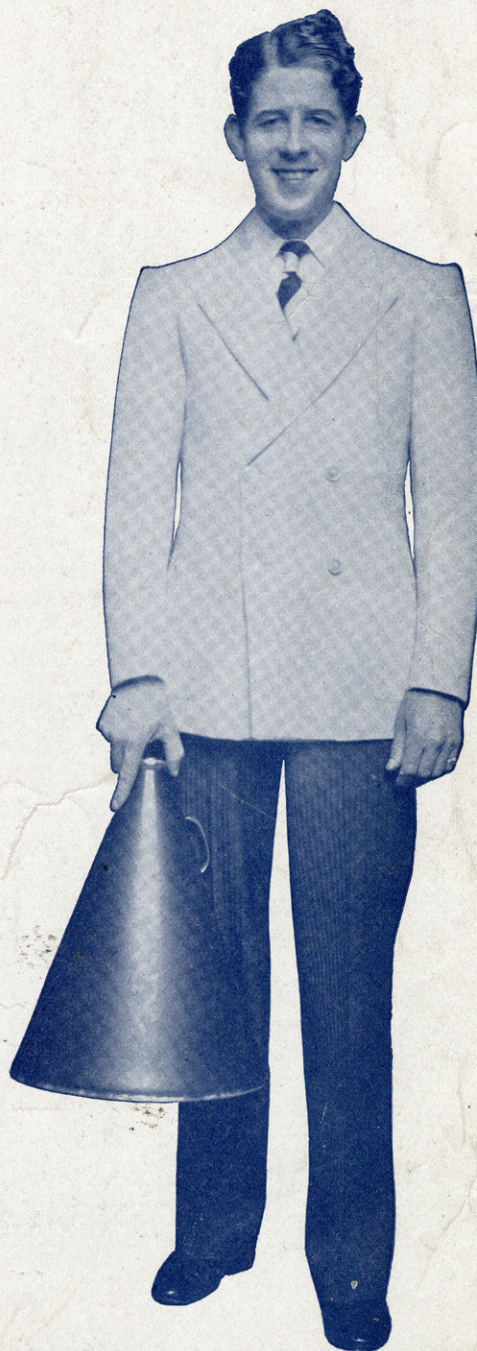
Music by
E. A. FENSTAD

Arrangement by
A. W. SPRAGUE

Words by
LINCOLN COLCORD

Also Published

Vocal Orchestration
Special Dance Orchestration
Band Arrangement
Choral Arrangements and Special
Adaptations for School Use



CARL FISCHER, INC.
Cooper Square, NEW YORK



Tenor Banjo Solo*
(Universal Notation)

Stein Song

By LINCOLN COLCORD
and E. A. FENSTAD
Arr. by Ralph Colicchio

mf Ab Ab Ab Ab Ab Ab Bb min. 6 Bb min. Bb min. Bb min.

Bb min. Eb Eb Aug. Ab Eb⁹ Ab Ab Ab Ab Ab

Ab Bb min. 6 Bb min. Dim. Ab Ab Eb⁷ C min. Eb Ab *Fine*

f C F min. C⁷ Bb Eb Bb⁷

C F min. C⁷ Bb Eb Bb⁷ Eb Eb⁷ *D.C. al Fine*

Hawaiian (Steel) Guitar Solo* (A Tuning E A E A C# E)

Arr. by Ralph Colicchio

mf Ab Ab Ab Ab Ab Ab

Ab Eb Aug. Ab Ab Ab Ab Ab

Ab Ab Ab Ab *Fine*

f Eb

Ab *D.C. al Fine*

*Introduction omitted

Copyright 1930 by Carl Fischer Inc., New York
These Arrangements Copyright 1930 by Carl Fischer Inc., New York
International Copyright Secured

Sheet Music Edition

V. 1117

Words by

LINCOLN COLCORD

Stein Song

(UNIVERSITY OF MAINE)

(Ukulele arr. - see note below*)

Music by E.A. FENSTAD

Arranged by A.W. SPRAGUE

New arrangement by Rudy Vallée

3

SM 8682

Piano

Musical notation for the piano introduction, consisting of two staves in 6/8 time with a key signature of three flats (B-flat, E-flat, A-flat). The music begins with a forte (f) dynamic and features a rhythmic pattern of eighth and sixteenth notes.

Voice

Fill _____ the steins to {dear old Maine, Shout till the
col - lege days.

Musical notation for the piano accompaniment of the first vocal line, marked mezzo-forte (mf). It consists of two staves in 6/8 time with a key signature of three flats, providing harmonic support for the voice.

raft - ers ring! _____ Stand _____ and drink a

Musical notation for the piano accompaniment of the second vocal line, continuing the harmonic support in 6/8 time with a key signature of three flats.

toast once a - gain! — Let ev-'ry loy - al {Maine man sing _____ (Then)
man now

Musical notation for the piano accompaniment of the third vocal line, including chord diagrams above the staff. It continues the harmonic support in 6/8 time with a key signature of three flats.

Copyright MCMX by Carl Fischer, New York
 Copyright MCMXXVII by Carl Fischer Inc., New York
 Copyright MCMXXX by Carl Fischer Inc., New York
 International Copyright Secured

* Tune Ukulele
 or Banjo-Uke
 A D F# G
 Put Uke Capo
 on 1st Fret

CC
24248-4

Drink _____ to all the hap - py hours, Drink to the

care - less days _____ Drink _____ to (Maine, our Al - ma her,

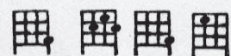
Ma - ter, — The col - lege of our hearts al - ways. _____

To the trees, _____ to the sky! _____ To the Spring in its glo - ri - ous

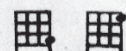
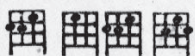




hap - pi - ness, To the youth, — to the fire, — To the life that is mov - ing and



call - ing us! To the Gods, — to the Fates, — To the rul - ers of men and their



des - ti - nies; To the lips, — to the eyes, — To the girls who will love us some day! — Oh



fill — the steins to { dear old Maine, Shout till the raft - ers ring! —
col - lege days.

Stand _____ and drink a toast once a - gain! — Let ev-'ry loy-al

(Maine man sing _____ (Then) Drink _____ to all the hap - py hours,
 (man now

ff

Drink to the care - less days, _____ Drink — to {Maine, our Al - ma
 her,

Ma - - ter, — The col - lege of our hearts al - ways. —

Stein Song

(Saxophone Parts*)

(Play Large Notes for Solo— Small Notes for Duet)

By LINCOLN COLCORD

and E. A. FENSTAD

Arr. by Frank E. Barry

E♭ Alto Saxophone (Also E♭ Baritone Sax., E♭ Clarinet or Alto Clarinet)

Musical score for E♭ Alto Saxophone. It consists of five staves of music. The first staff begins with a treble clef, a 6/8 time signature, and a key signature of two flats (B♭ major). The music starts with a mezzo-forte (*mf*) dynamic and includes various note values, rests, and phrasing slurs. The piece concludes with a double bar line, a repeat sign, and the instruction "D.S. al Fine".

B♭ Tenor Saxophone (Also B♭ Soprano Sax., B♭ Trumpet, B♭ Clarinet or any "B♭" Instrument— Trombone in G)

Musical score for B♭ Tenor Saxophone. It consists of five staves of music, mirroring the structure of the Alto Saxophone part. The key signature is two flats (B♭ major) and the time signature is 6/8. The piece concludes with a double bar line, a repeat sign, and the instruction "D.S. al Fine".

C Melody Saxophone (Also C Soprano— Violin, Flute, Oboe or any "C" instrument)

Musical score for C Melody Saxophone. It consists of five staves of music, mirroring the structure of the other parts. The key signature is two flats (B♭ major) and the time signature is 6/8. The piece concludes with a double bar line, a repeat sign, and the instruction "D.S. al Fine".

* Introduction omitted

Copyright 1930 by Carl Fischer Inc., New York
These Arrangements Copyright 1930 by Carl Fischer Inc., New York
International Copyright Secured



Rudy Vallée's Latest Sensation

ALL THROUGH THE NIGHT

. . . and all through the day as well the melody and lyric of this ravishing, dreamy waltz song will tantalize your memory.

. . . Words and Music by
HELEN YORKE, NORMAN CLARK,
and RUDY VALLÉE

CHORUS *mf*

When the pale moon beams, Take me in your dreams, All
through the night; Let me dream the bliss
of your ten-der kiss, All through the night;

mp

Copyright MCMXXX by Carl Fischer Inc., New York
International Copyright Secured

CARL FISCHER, Inc. COOPER SQUARE NEW YORK

