

245

THE SCHOOLHOUSE BLUES

SAM H. HARRIS presents

IRVING BERLIN'S MUSIC BOX REVUE

Words & Music by
IRVING BERLIN



Say It With Music60
In a Cozy Kitchenette Apartment60
My Little Book of Poetry60
They Call It Dancing60
Pearls60
Behind the Fan60
Everybody Step60
The Schoolhouse Blues60
At the Court Around the Corner60
Selection	1.00

Staged by
HASSARD SHORT



Irving Berlin, Inc.
MUSIC PUBLISHERS
1607 Broadway PRINTED IN U.S.A. New York

SM 5118

2

THE SCHOOLHOUSE BLUES

Words and Music by
IRVING BERLIN

Moderato

f *fz*

The piano introduction is in 2/4 time, marked Moderato. It features a melodic line in the right hand and a bass line in the left hand. The key signature has one flat (B-flat). The piece begins with a series of eighth notes in the right hand, followed by a more complex rhythmic pattern. The left hand provides a steady accompaniment with quarter notes and chords. The introduction concludes with a final chord marked *fz*.

Hook-ey Hook-ey Oh how we love to play

Vamp

p *p*

The vamp section consists of a repeating piano accompaniment. The right hand plays a rhythmic pattern of eighth notes with various chords, while the left hand plays a simple bass line of quarter notes. The tempo is marked Vamp. The section is repeated twice, with a double bar line in the middle. The dynamics are marked *p* (piano).

Hook-ey Hook-ey There'll be no school to-day Our— les-son

The second line of the song features a vocal melody in the right hand and piano accompaniment in the left hand. The melody is simple and catchy, with lyrics: "Hook-ey Hook-ey There'll be no school to-day Our— les-son". The piano accompaniment consists of chords and a bass line. The key signature remains one flat. The piano part includes a double bar line and a fermata over the final chord.

kept us guess-in' That's why we ran a - way — Say

This system contains the first line of music. It features a vocal line on a treble clef staff and a piano accompaniment on grand staff (treble and bass clefs). The key signature has one flat (B-flat). The lyrics are: "kept us guess-in' That's why we ran a - way — Say". The piano part includes dynamic markings such as *fz* and accents.

moth - er, fa - ther, wants us to go - to school But we'd rath - er

This system contains the second line of music. The vocal line continues with the lyrics: "moth - er, fa - ther, wants us to go - to school But we'd rath - er". The piano accompaniment features a *p* (piano) dynamic marking.

be in a swim - ming pool When the sun is in the sky —

This system contains the third line of music. The vocal line continues with the lyrics: "be in a swim - ming pool When the sun is in the sky —".

That is just the rea - son why — We've got the

This system contains the fourth line of music. The vocal line continues with the lyrics: "That is just the rea - son why — We've got the". The piano accompaniment concludes with a double bar line.

CHORUS

School - house blues we've got the

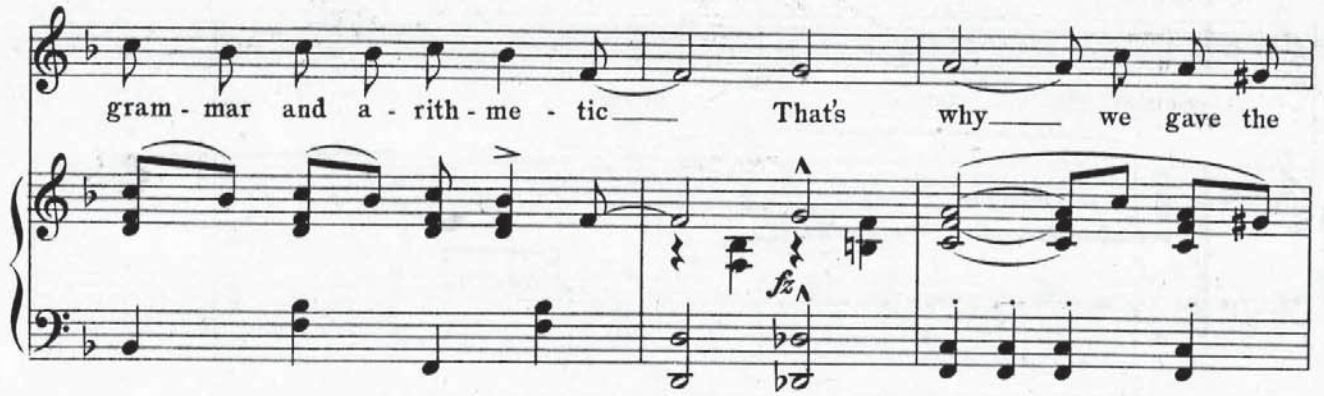
pf

school - house blues Tired of read - ing

his - to - ry Don't care for ge -

og - ra - phy we're get - ting oh so sick of

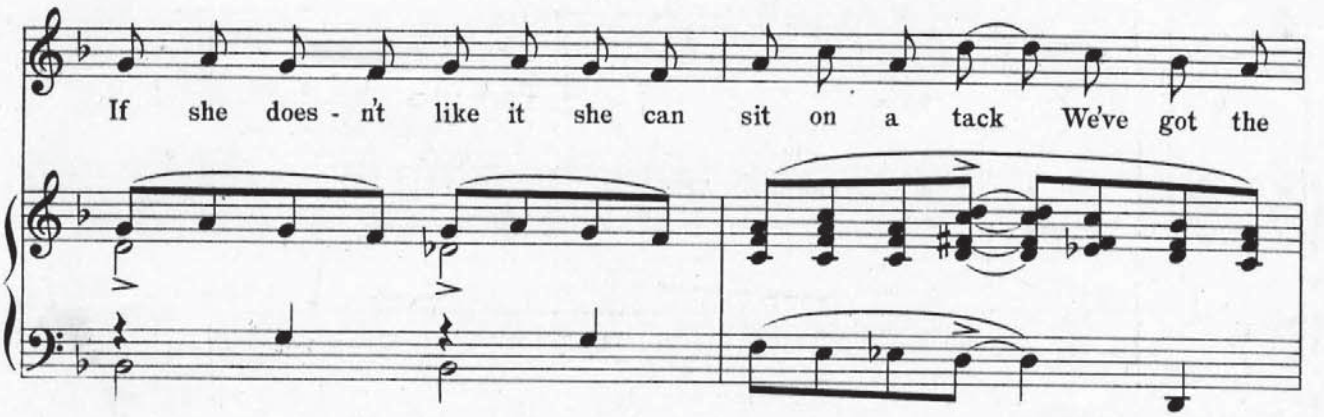
gram - mar and a - rith - me - tic — That's why — we gave the



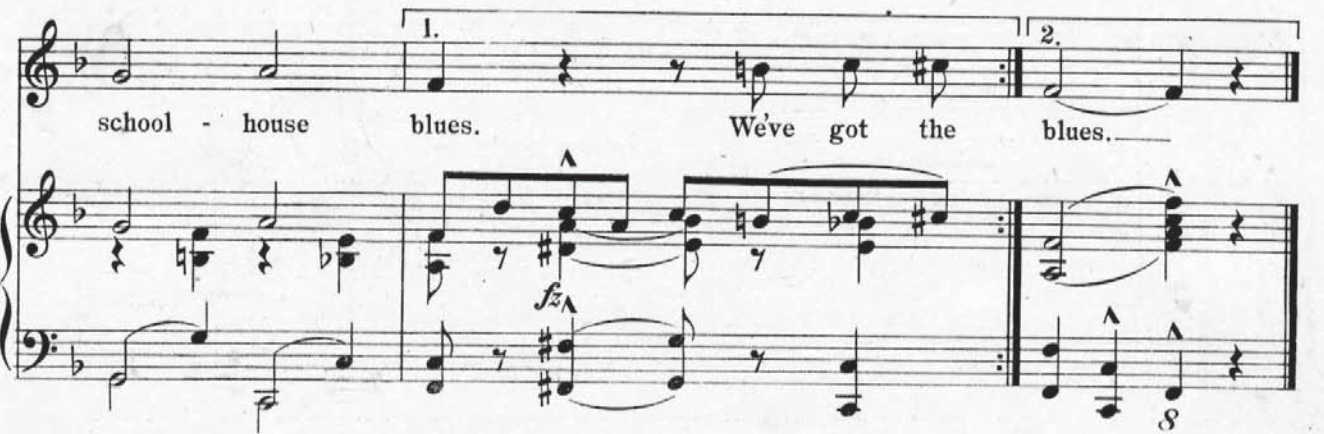
teach - er the sack and — we're nev - er gon - na go back



If she does - n't like it she can sit on a tack We've got the



1. school - house blues. We've got the blues. — 2.



STANDARDS OF THE WORLD

"STERLING" ON SILVER
"IRVING BERLIN" ON SONGS

GEMS

FROM

THE IRVING BERLIN MUSIC BOX REVUE

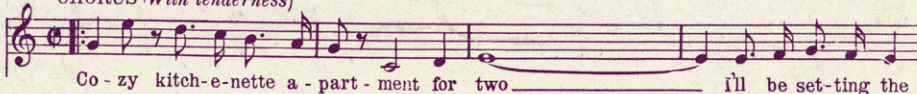
SAY IT WITH MUSIC

REFRAIN



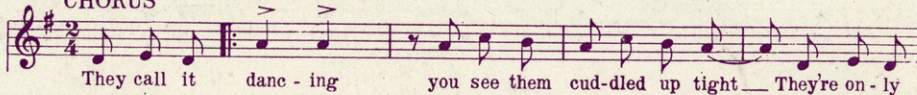
IN A COZY KITCHENETTE APARTMENT

CHORUS *(With tenderness)*



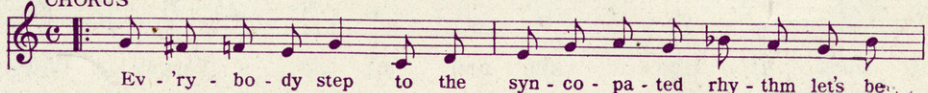
THEY CALL IT DANCING

CHORUS



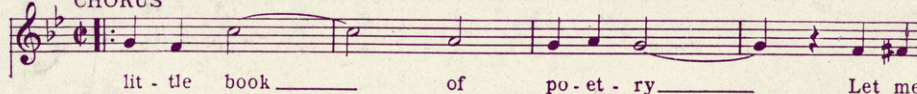
EVERYBODY STEP

CHORUS



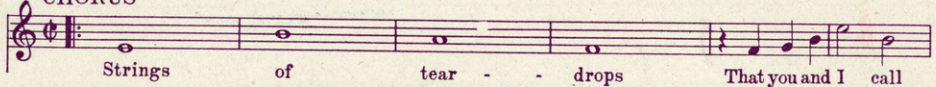
MY LITTLE BOOK OF POETRY

CHORUS



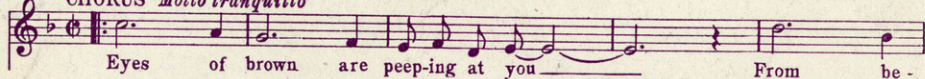
LEGEND OF THE PEARLS

CHORUS



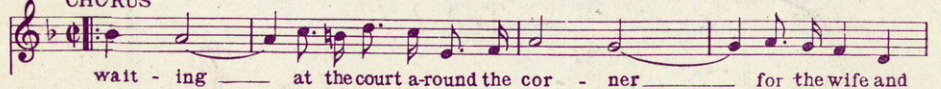
BEHIND THE FAN

CHORUS *Molto tranquillo*



AT THE COURT AROUND THE CORNER

CHORUS



Copyright, MCMXXI by Irving Berlin, Inc., 1607 B'way, N. Y. City

COPIES ON SALE WHEREVER MUSIC IS SOLD